

PIO-D48 Series Card

User Manual

48-channel OPTO-22 compatible DIO board

Version 3.4, Aug. 2015

SUPPORTS

Board includes PIO-D48, PIO-D48U, PIO-D48SU and PEX-D48.

WARRANTY

All products manufactured by ICP DAS are warranted against defective materials for a period of one year from the date of delivery to the original purchaser.

WARNING

ICP DAS assumes no liability for damages consequent to the use of this product. ICP DAS reserves the right to change this manual at any time without notice. The information furnished by ICP DAS is believed to be accurate and reliable. However, no responsibility is assumed by ICP DAS for its use, nor for any infringements of patents or other rights of third parties resulting from its use.

COPYRIGHT

Copyright © 2013 by ICP DAS. All rights are reserved.

TRADEMARK

Names are used for identification only and may be registered trademarks of their respective companies.

CONTACT US

If you have any question, please feel to contact us. We will give you quick response within 2 workdays.

Email: service@icpdas.com, service.icpdas@gmail.com

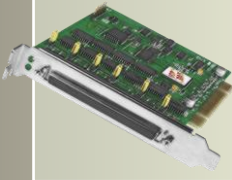
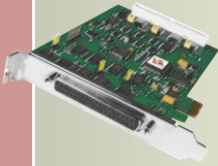


TABLE OF CONTENTS

1.	INTRODUCTION	3
1.1	PACKING LIST.....	4
1.2	FEATURES.....	4
1.3	SPECIFICATIONS	5
2.	HARDWARE CONFIGURATION.....	6
2.1	BOARD LAYOUT	6
2.2	I/O PORT LOCATION	8
2.3	CARD ID SWITCH	9
2.4	PIN ASSIGNMENTS.....	10
2.5	ENABLE I/O OPERATION.....	12
2.6	D/I/O ARCHITECTURE.....	13
2.7	INTERRUPT OPERATION	14
2.7.1	<i>Interrupt Block Diagram.....</i>	<i>15</i>
2.7.2	<i>INT_CHAN_0</i>	<i>16</i>
2.7.3	<i>INT_CHAN_1</i>	<i>17</i>
2.7.4	<i>INT_CHAN_2</i>	<i>18</i>
2.7.5	<i>INT_CHAN_3</i>	<i>19</i>
3.	HARDWARE INSTALLATION	20
4.	SOFTWARE INSTALLATION	24
4.1	OBTAINING/INSTALLING THE DRIVER INSTALLER PACKAGE	24
4.2	PNP DRIVER INSTALLATION	25
4.3	VERIFYING THE INSTALLATION	26
4.3.1	<i>How do I get into Windows Device Manager?</i>	<i>26</i>
4.3.2	<i>Check that the Installation</i>	<i>28</i>
5.	TESTING PIO-D48 SERIES CARD	29
5.1	SELF-TEST WIRING	29
5.2	EXECUTE THE TEST PROGRAM.....	31
6.	I/O CONTROL REGISTER	33
6.1	HOW TO FIND THE I/O ADDRESS.....	33
6.2	THE ASSIGNMENT OF I/O ADDRESS	35
6.3	THE I/O ADDRESS MAP	37

6.3.1	RESET\ Control Register.....	38
6.3.2	INT Mask Control Register.....	38
6.3.3	Aux Status Register.....	39
6.3.4	Interrupt Polarity Register.....	40
6.3.5	Read/Write I/O Port.....	41
6.3.6	Read/Write 8254.....	43
6.3.7	Read/Write Clock/Int Control Register.....	45
6.3.8	Read Card ID Register.....	45
7.	DEMO PROGRAMS.....	46
7.1	DEMO PROGRAM FOR WINDOWS.....	46
7.2	DEMO PROGRAM FOR DOS.....	48
	APPENDIX: DAUGHTER BOARD.....	49
A1.	DB-37, DN-37, DN-50 and DN-100.....	49
A2.	DB-8125.....	50
A3.	ADP-37/PCI and ADP-50/PCI.....	50
A4.	DB-24P and DB-24PD Isolated Input Board.....	51
A5.	DB-24R and DB-24RD Relay Board.....	52
A6.	Daughter Boards Comparison Table.....	53

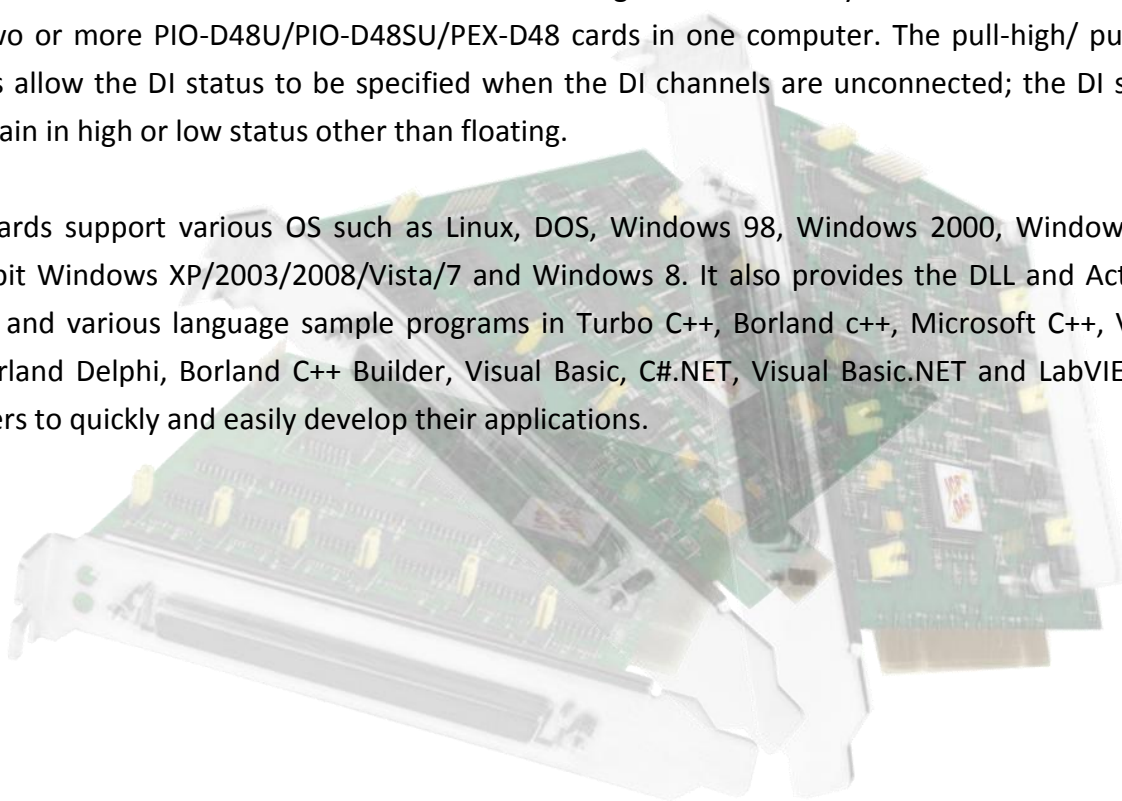
1. Introduction

The PIO-D48U/D48SU and PEX-D48 is the new generation product that ICP DAS provides to meet RoHS compliance requirement and is designed as completely compatible with the PIO-D48. Users can replace the PIO-D48 by the PIO-D48U/PIO-D48SU/PEX-D48 directly without software/driver modification.

The PIO-D48U/D48SU supports 3.3 V/5 V PCI bus, while the PEX-D48 supports PCI Express bus. These cards provide 48 TTL digital I/O lines, and these lines are grouped into six 8-bit bi-direction ports. Every three 8-bit ports are grouped as port A (PA), port B (PB) and port C (PC) on a connector, and the port C can be split into 2 nibble-wide(4-bit) parts. All ports are configured as inputs upon power-up or reset.

The PIO-D48U/D48SU and PEX-D48 also adds a Card ID switch and pull-high/ pull-low resistors for DI on board. Users can set Card ID on a board and recognize the board by the ID via software when using two or more PIO-D48U/PIO-D48SU/PEX-D48 cards in one computer. The pull-high/ pull-low resistors allow the DI status to be specified when the DI channels are unconnected; the DI status will remain in high or low status other than floating.

These cards support various OS such as Linux, DOS, Windows 98, Windows 2000, Windows NT, 32-/64-bit Windows XP/2003/2008/Vista/7 and Windows 8. It also provides the DLL and Active X control, and various language sample programs in Turbo C++, Borland c++, Microsoft C++, Visual C++, Borland Delphi, Borland C++ Builder, Visual Basic, C#.NET, Visual Basic.NET and LabVIEW to help users to quickly and easily develop their applications.



1.1 Packing List

The shipping package includes the following items:

- One PIO-D48 series card hardware
- One printed Quick Start Guide
- One software utility CD



Note:

If any of these items is missing or damaged, contact the dealer from whom you purchased the product. Save the shipping materials and carton in case you want to ship or store the product in the future.

1.2 Features

- Support the +5V PCI bus for PIO-D48
- Support the +3.3/+5 V PCI bus for PIO-D48U/D48SU
- Supports PCI Express x 1 for PEX-D48
- 48 channels of digital I/O
- Bi-direction programmable I/O ports under software control
- All I/O lines buffered on the board
- Six 8-bit bi-direction I/O ports
- Connects directly to DB-24PR, DB-24PD, DB-24RD, DB-24PRD, DB-16P8R, DB-24POR, DB-24SSR, DB-24C or any OPTO-22 Compatible daughter boards
- PIO-D48(U)/PEX-D48: One DB37 connector and one 50-pin box headers
- PIO-D48SU: One SCSI II 100-pin connector
- Interrupt source 4-channel
- Card ID function for PIO-D48U/PIO-D48SU/PEX-D48
- One 16-bit event counter and one 32-bit programmable internal timer
- Emulate two industrial-standard 8255 mode 0
- Buffer output for higher driving capability than 8255
- PIO-D48(U)/D48SU:DIO response time is about 1 μ s (1 MHz)
- PEX-D48: DIO response time is about 500 kHz.
- SMD, short card, power saving

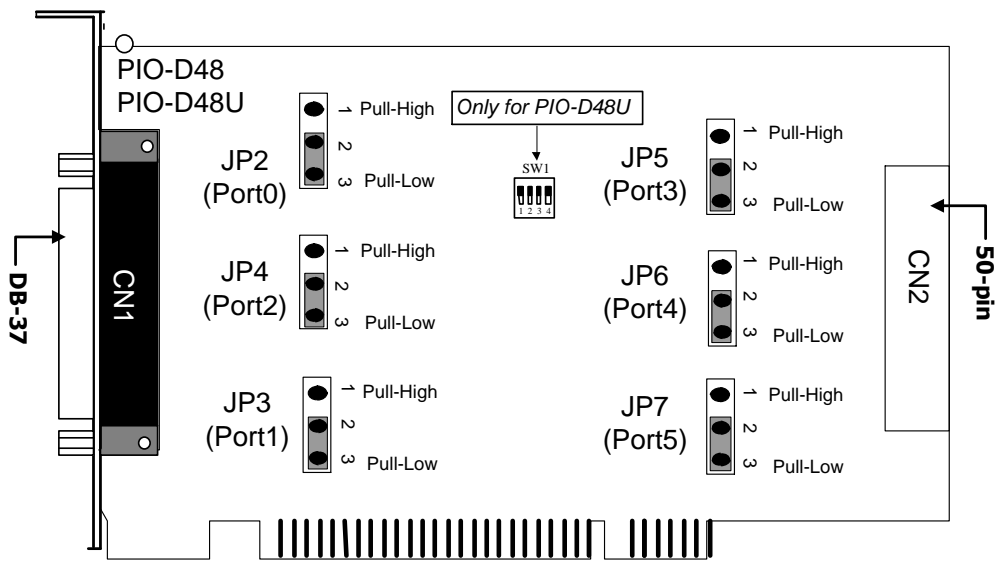
1.3 Specifications

Model Name	PIO-D48	PIO-D48U	PIO-D48SU	PEX-D48
Programmable Digital I/O				
Channels	48			
Digital Input				
Compatibility	5 V/TTL			
Input Voltage	Logic 0: 0.8 V max. Logic 1: 2.0 V min.			
Response Speed	1 MHz			500 KHz
Digital Output				
Compatibility	5 V/TTL			
Output Voltage	Logic 0: 0.4 V max. Logic 1: 2.4 V min.			
Output Capability	Sink: 64mA @ 0.8 V Source: 32 mA @ 2.0 V			
Response Speed	1 MHz			500 KHz
General				
Bus Type	5 V PCI, 32-bit, 33 MHz	3.3 V/5 V Universal PCI, 32-bit, 33 MHz		PCI Express x1
Data Bus	8-bit			
Card ID	No	Yes(4-bit)		
I/O Connector	Female DB37 x 1 50-pin box header x 1		Female SCSI II 100 pin x 1	Female DB37 x 1 50-pin box header x 1
Dimensions (L x W x D)	156 mm x 105 mm x 22mm		140 mm x 97 mm x 22 mm	172 mm x 112 mm x 22 mm
Power Consumption	900 mA @ +5 V			
Operating Temperature	0 ~ 60 °C			
Storage Temperature	-20 ~ 70 °C			
Humidity	5 ~ 85% RH, non-condensing			

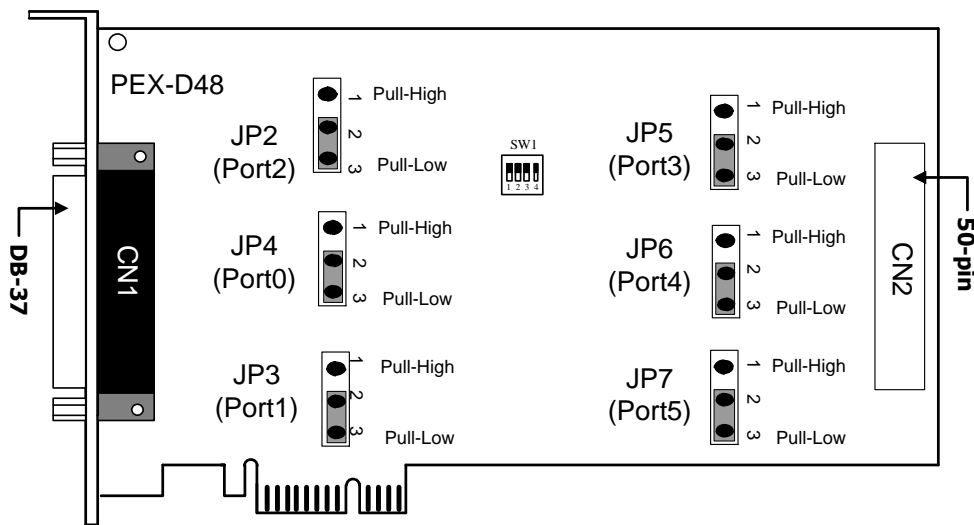
2. Hardware Configuration

2.1 Board Layout

- The board layout of the PIO-D48/D48U cards are shown below:

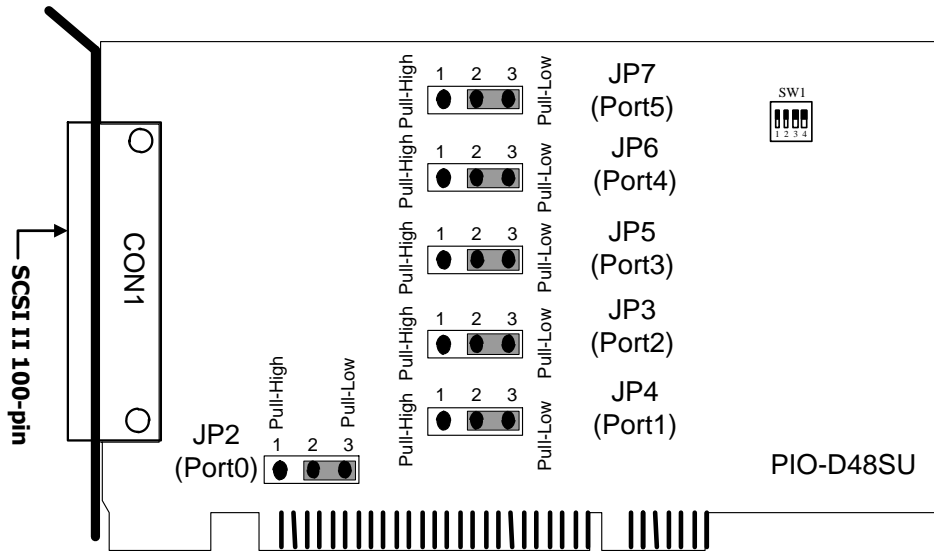


- The board layout of the PEX-D48 cards are shown below:



Note: Default Setting: JP2/3/4/5/6/7=2-3 short = Pull-Low

- The board layout of the PIO-D48SU cards are shown below:



Note: Default Setting: JP2/3/4/5/6/7=2-3 short = Pull-Low

2.2 I/O Port Location

There are six 8-bit I/O ports in the PIO-D48 series cards. Each I/O port can be programmed as a D/I or D/O port. When the PC is first powered-on or reset, all the ports are configured as D/I ports. These D/I ports can be selected to either pull-high or pull-low via placement of the JP2 to JP7 jumpers. These I/O port locations are given as follows:

Connector of <u>PIO-D48/D48U</u>	CN1 (DB37)	CN2 (50-pin)
PA0 ~ PA7	Port0 (pull-high/low by JP2)	Port3 (pull-high/low by JP5)
PB0 ~ PB7	Port1 (pull-high/low by JP3)	Port4 (pull-high/low by JP6)
PC0 ~ PC7	Port2 (pull-high/low by JP4)	Port5 (pull-high/low by JP7)

Connector of <u>PEX-D48</u>	CN1 (DB37)	CN2 (50-pin)
PA0 ~ PA7	Port0 (pull-high/low by JP4)	Port3 (pull-high/low by JP5)
PB0 ~ PB7	Port1 (pull-high/low by JP3)	Port4 (pull-high/low by JP6)
PC0 ~ PC7	Port2 (pull-high/low by JP2)	Port5 (pull-high/low by JP7)

Connector of <u>PIO-D48SU</u>	CON1 (SCSI 100-pin)
PA00 ~ PA07	Port0 (pull-high/low by JP2)
PB00 ~ PB07	Port1 (pull-high/low by JP3)
PC00 ~ PC07	Port2 (pull-high/low by JP4)
PA10 ~ PA17	Port3 (pull-high/low by JP5)
PB10 ~ PB17	Port4 (pull-high/low by JP6)
PC10 ~ PC17	Port5 (pull-high/low by JP7)

Note:

Refer to [Sec. 2.1](#) for the I/O port locations and JP2~JP7 pull-high/low placements on the board layout.

2.3 Card ID Switch

The PIO-D48U, PIO-D48SU and PEX-D48 has a Card ID switch (SW1) with which users can recognize the board by the ID via software when using two or more PIO-D48(S)U and PEX-D48 cards in one computer. The default Card ID is 0x0. For detail SW1 Card ID settings, please refer to Table 2.1.

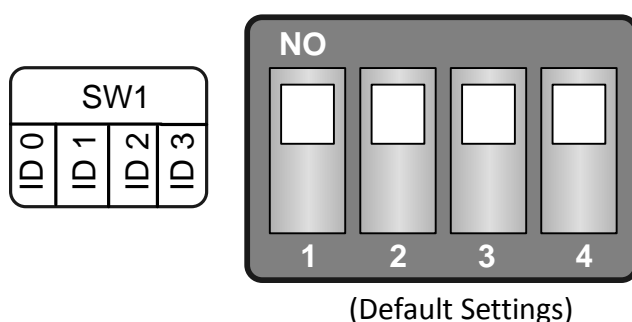


Table 2.1 (*) Default Settings; OFF → 1; ON → 0

Card ID (Hex)	1 ID0	2 ID1	3 ID2	4 ID3
(*) 0x0	ON	ON	ON	ON
0x1	OFF	ON	ON	ON
0x2	ON	OFF	ON	ON
0x3	OFF	OFF	ON	ON
0x4	ON	ON	OFF	ON
0x5	OFF	ON	OFF	ON
0x6	ON	OFF	OFF	ON
0x7	OFF	OFF	OFF	ON
0x8	ON	ON	ON	OFF
0x9	OFF	ON	ON	OFF
0xA	ON	OFF	ON	OFF
0xB	OFF	OFF	ON	OFF
0xC	ON	ON	OFF	OFF
0xD	OFF	ON	OFF	OFF
0xE	ON	OFF	OFF	OFF
0xF	OFF	OFF	OFF	OFF

2.4 Pin Assignments

The Pin assignments for all connectors on the PIO-D48/D48U/D48SU and PEX-D48 are represented in Figure 2-1 and Figure 2-2. All signal sources for each digital input or output pin (channel) is TTL compatible.

■ **Pin Assignments of the PIO-D48/D48U and PEX-D48:**

CN1: 37-pin D-type female connector (for Port0, Port1, Port2).

CN2: 50-pin flat-cable connector (for Port3, Port4, Port5).

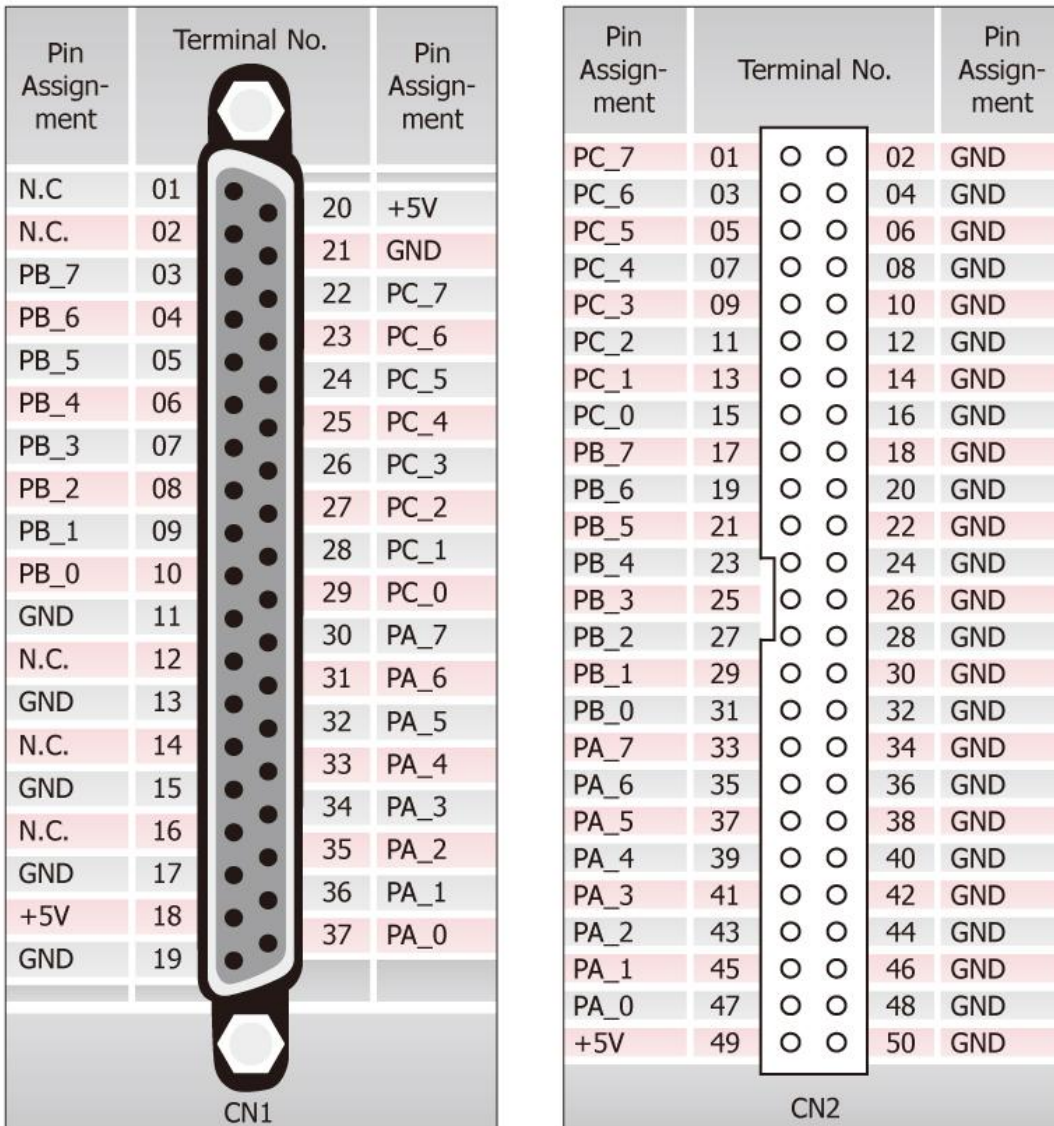


Figure 2-1

2.5 Enable I/O Operation

When the PC is first turned on, all operations involved with digital I/O channels are disabled. Note that the digital I/O channel of each port is enabled or disabled by the RESET\ signal (Refer to [Sec. 6.3.1](#) for more information related to this). The power-on states are given as follows:

- D/I/O operations for each port are disabled.
- D/I/O ports are all configured as Digital input ports.
- D/O latch register outputs are all high impedance. (Refer to [Sec. 2.6](#))

The user has to perform some initialization before using these digital I/O ports. The recommended steps are given below:

Step 1: Find the address-mapping for PIO/PISO cards. (Refer to [Sec.6.1](#))

Step 2: Enable all Digital I/O operations. (Refer to [Sec. 6.3.1](#)).

Step 3: Configure ports to their expected D/I/O state & send their initial values to every D/O port (Refer to [Sec. 6.3.7](#))

For more information on the initial procedure for digital I/O ports, please refer to the DIO demo program.

2.6 D/I/O Architecture

The digital I/O control architecture for the PIO-D48/D48U/D48SU and PEX-D48 are demonstrated in Figure 2.3. The operation method used for the control signal is presented below.

- RESET\ is in the Low-state → all D/I/O operation is disabled
- RESET\ is in the High-state → all D/I/O operation is enabled.
- If D/I/O is configured as a D/I port → D/I= external input signal.
→ DI ports can be configured as either pull-high or pull-low by setting the JP2/3/4/5/6/7 jumpers (shorted 1-2=pull-high; shorted 2-3= pull-low).
- If D/I/O is configured as a D/O port → D/I = read back D/O.
- If D/I/O is configured as D/I port → sending data to a digital input port will only change the D/O latch register. The latched data will be output when the port is configured as digital output and is activated right away.

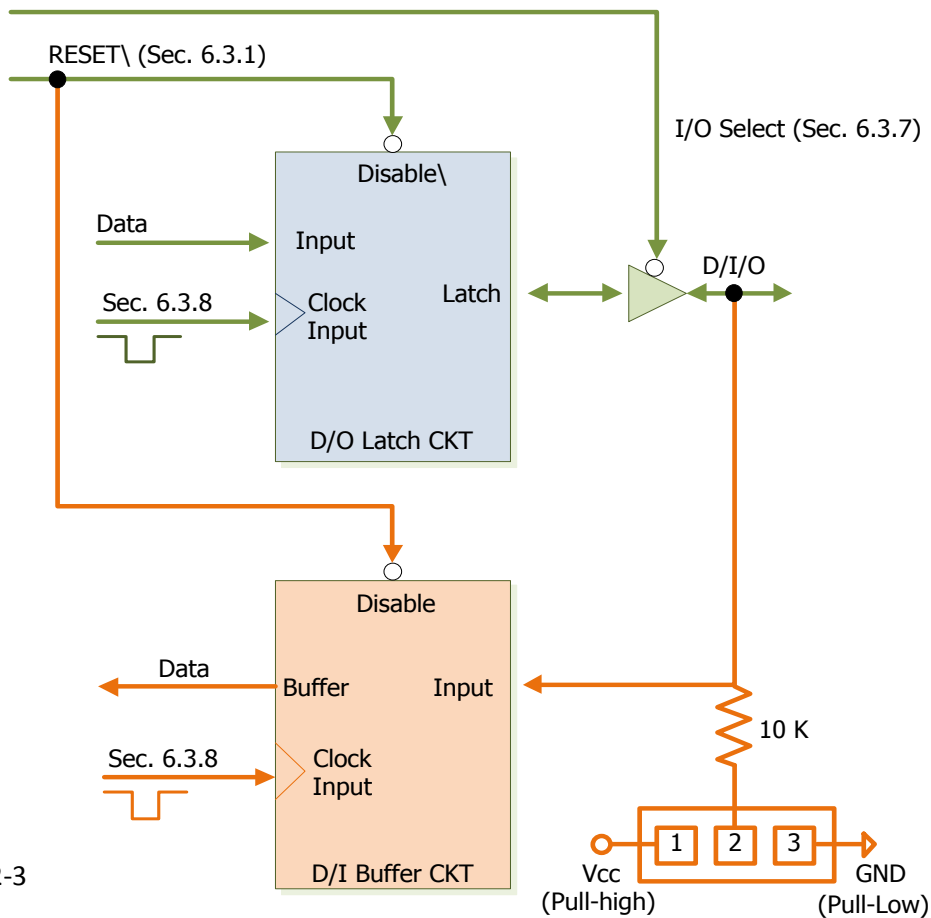


Figure 2-3

JP2/3/4/5/6/7 pull-high/pull-low select
(Default: all JPx are in 2-3 short, selection pull-low)

2.7 Interrupt Operation

There are four interrupt sources in the PIO-D48/D48U/D48SU and PEX-D48. These four signals are named INT_CHAN_0, INT_CHAN_1, INT_CHAN_2 and INT_CHAN_3. Their signal sources are given as follows:

- INT_CHAN_0: PC3/PC7 from port-2 (Refer to [Sec. 2.7.2](#))
- INT_CHAN_1: PC3/PC7 from port-5 (Refer to [Sec. 2.7.3](#))
- INT_CHAN_2: Cout0 (Refer to [Sec. 2.7.4](#))
- INT_CHAN_3: Cout2 (Refer to [Sec. 2.7.5](#))

Note that DEMO4.C, DEMO7.C, DEMO8.C, DEMO9.C and DEMO10.C are demo programs for a single interrupt source and DEMO11.C is the demo program for more than one interrupt source in the DOS operating system. If only one interrupt signal source is used, the interrupt service routine does not need to identify the interrupt source. However, if there are more than one interrupt source, the interrupt service routine has to identify the active signals in the following manner:

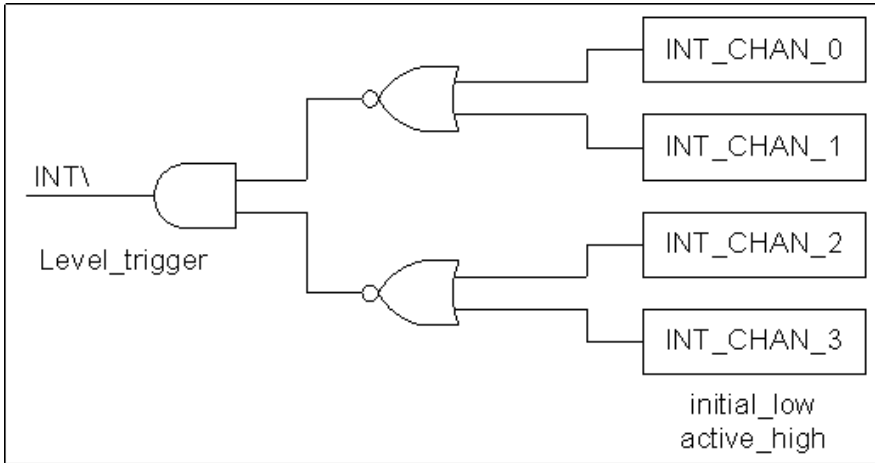
1. Read the new status of all interrupt signal sources. (refer to [Sec 6.3.5](#))
2. Compare the new status with the old status to identify the active signals.
3. If INT_CHAN_0 is active, service INT_CHAN_0 & non-inverter/inverted the INT_CHAN_0 signal.
4. If INT_CHAN_1 is active, service INT_CHAN_1 & non-inverted/inverted the INT_CHAN_1 signal.
5. If INT_CHAN_2 is active, service INT_CHAN_2 & non-inverted/inverted the INT_CHAN_2 signal.
6. If INT_CHAN_3 is active, service INT_CHAN_3 & non-inverted/inverted the INT_CHAN_3 signal.
7. Update the interrupt status.

Limitation!!

If the interrupt signal is too short, the new status may be the same as the old status. So the interrupt signal must be held active until the interrupt service routine has been executed. This hold time is different for differing operating systems. The hold time can be as short as a micro-second or as long as 1 second. In general, 20 ms is enough for all O.S.

2.7.1 Interrupt Block Diagram

Figure 2-4



The INT\ interrupt output signals are **level-trigger and Active_Low**. If the INT\ generates a low-pulse, the PIO-D48 series cards will interrupt the PC once per occasion. If the INT\ is fixed in low level, the PIO-D48 series cards will interrupt the PC continuously. So the

INT_CHAN_0/1/2/3 must be controlled with **pulse_type** signals. **They should normally be fixed in a low level state and generate a high_pulse to interrupt the PC.**

The priority of INT_CHAN_0/1/2/3 is the same. If all these four signals are active at the same time, then INT\ will be active only once per occasion. So the interrupt service routine has to read the status for all interrupt channels for multi-channel interruptions. (Refer to [Sec. 2.7](#) for more information).

Operating System: DOS

DEMO11.C For both INT_CHAN_0 & INT_CHAN_1

If only one interrupt source is used, the interrupt service routine doesn't have to read the interrupt source status. Note that DEMO4.C to DEMO10.C is demo programs for a single-channel interruption within the DOS operating system.

Operating System: DOS

DEMO4.C For INT_CHAN_3 only

DEMO7.C For INT_CHAN_2 only

DEMO8.C For INT_CHAN_0 only

DEMO9.C For INT_CHAN_0 only

DEMO10.C For INT_CHAN_1 only

2.7.2 INT_CHAN_0

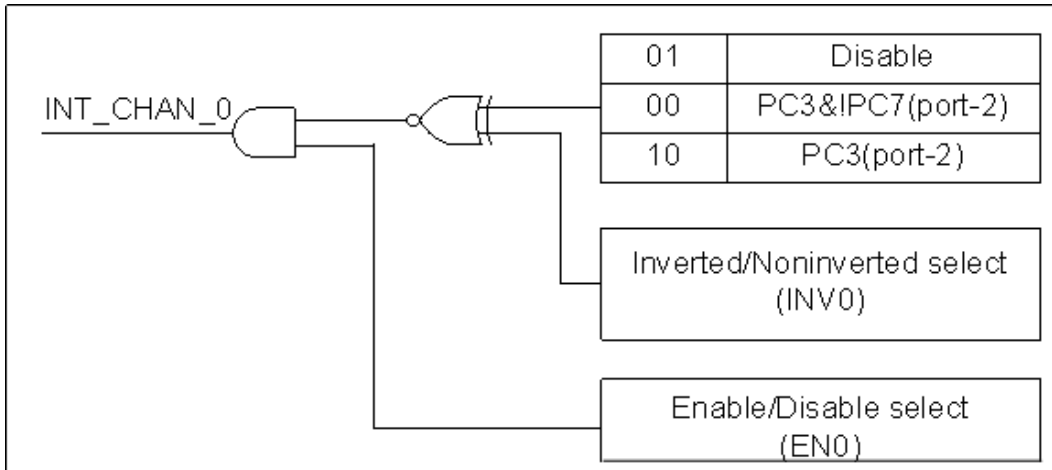


Figure 2-5

INT_CHAN_0 should normally be fixed in a low level state and generate a high_pulse to interrupt the PC.

INT_CHAN_0 can be equal to **PC3&!PC7** or be **PC3** programmable as is shown below : (Refer to [Sec. 6.3.9](#))

- CTRL_D3=0, CTRL_D2=1 → INT_CHAN_0= Disable
- CTRL_D3=1, CTRL_D2=0 → INT_CHAN_0= PC3 of port-2
- CTRL_D3=0, CTRL_D2=0 → INT_CHAN_0= PC3&!PC7 of port-2

EN0 can be used to enable/disable the INT_CHAN_0 as follows: (Refer to [Sec. 6.3.4](#))

- EN0=0 → INT_CHAN_0=Disabled
- EN0=1 → INT_CHAN_0=Enabled

INV0 can be used to invert/non-invert the PC3 or PC3&!PC7 as follows: (Refer to [Sec. 6.3.6](#))

- INV0=0 → INT_CHAN_0=inverted state of (PC3 or PC3&!PC7 of port-2)
- INV0=1 → INT_CHAN_0=non-inverted state of (PC3 or PC3&!PC7 of port-2)

Refer to the following demo programs for more information:

Operating System: DOS

DEMO8.C	For INT_CHAN_0 only (PC3 of Port-2)
DEMO9.C	For INT_CHAN_0 only (PC3&!PC7 of Port-2)

2.7.3 INT_CHAN_1

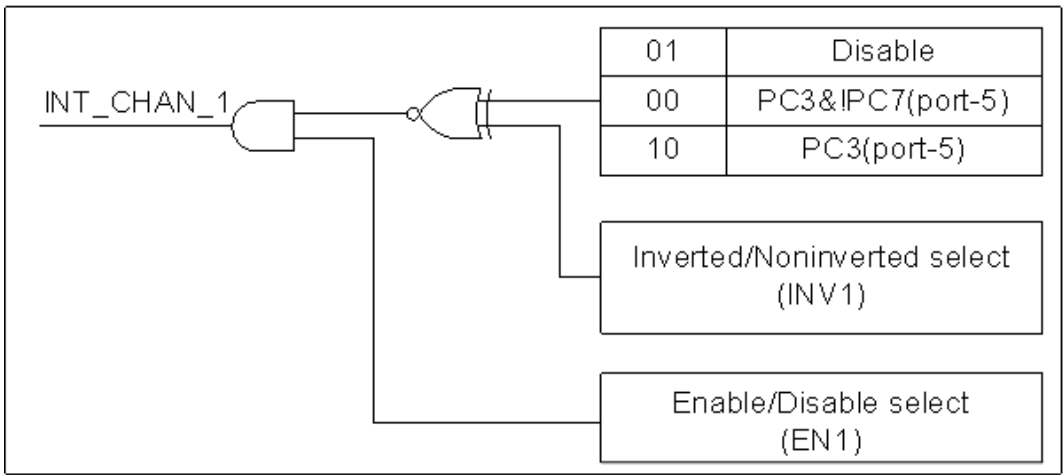


Figure 2-6

INT_CHAN_1 should normally be fixed in low level state and generate a high_pulse to interrupt the PC.

INT_CHAN_1 can be equal to **PC3&!PC7** or be **PC3** programmable as is shown below:(Refer to [Sec. 6.3.9](#))

- CTRL_D5=0, CTRL_D4=1 → INT_CHAN_1= Disabled
- CTRL_D5=1, CTRL_D4=0 → INT_CHAN_1= PC3 of port-5
- CTRL_D5=0, CTRL_D4=0 → INT_CHAN_1= PC3&!PC7 of port-5

EN1 can be used to enable/disable the INT_CHAN_1 as follows: (Refer to [Sec. 6.3.4](#))

- EN1=0 → INT_CHAN_1= Disabled
- EN1=1 → INT_CHAN_1= Enabled

INV1 can be used to invert/non-invert the PC3 or PC3&!PC7 as follows: (Refer to [Sec. 6.3.6](#))

- INV1=0 → INT_CHAN_1=inverted state of (PC3 or PC3&!PC7 of port-5)
- INV1=1 → INT_CHAN_1=non-inverted state of (PC3 or PC3&!PC7 of port-5)

Refer to the following demo program for more information:

Operating System: DOS

DEMO10.C For INT_CHAN_1 only (PC3&!PC7 of Port-5)

Note: Refer to [Sec. 2.7.2](#) for active high-pulse generation.

2.7.5 INT_CHAN_3

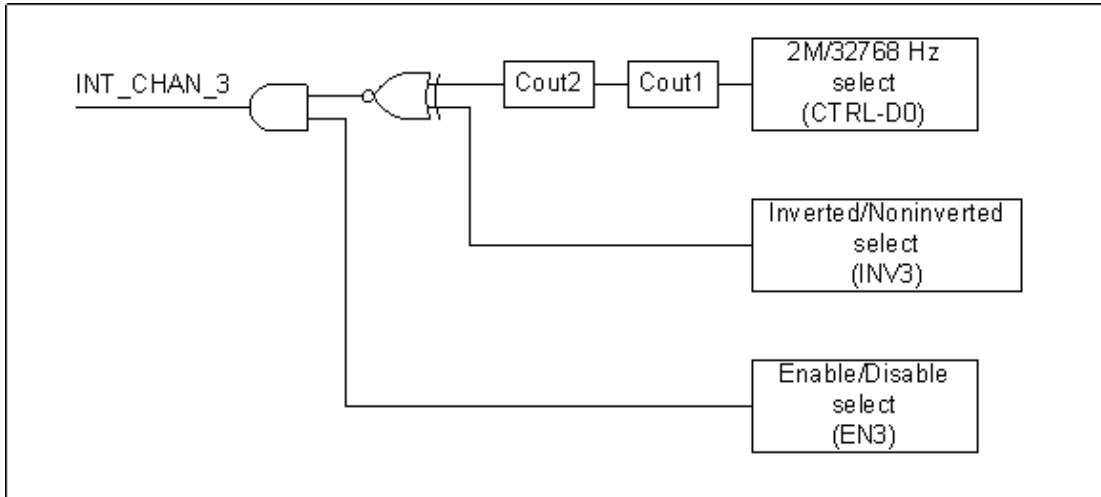


Figure 2-8

INT_CHAN_3 should normally be fixed in a low-level state and generate a high_pulse to interrupt the PC.

Cin1 can be 2M/32768Hz programmable as is given below: (Refer to [Sec. 6.3.9](#))

CTRL_D0=0 → Cin1=2 M clock source

CTRL_D0=1 → Cin1=32768 Hz clock source

EN3 can be used to enable/disable the INT_CHAN_3 as follows: (Refer to [Sec. 6.3.4](#))

EN3=0 → INT_CHAN_3= Disabled

EN3=1 → INT_CHAN_3= Enabled

INV3 can be used to invert/non-invert the Cout0 as follows: (Refer to [Sec. 6.3.6](#))

INV2=3 → INT_CHAN_3=invert (Cout2)

INV2=3 → INT_CHAN_3=non-invert (Cout2)

Refer to the following demo program for more information:

Operating System: DOS

DEMO4.C

For INT_CHAN_3 only (Cout2)

Note: Refer to [Sec. 2.7.2](#) for active high-pulse generation.

3. Hardware Installation



Note:

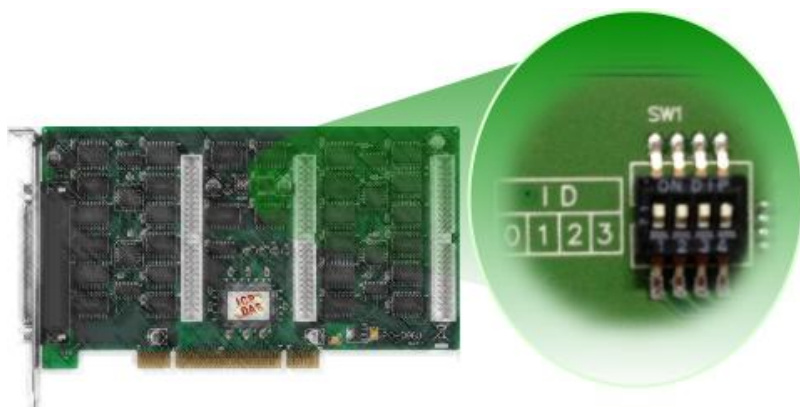
As certain operating systems, such as Windows 2000/XP may require the computer to be restarted after a new driver is installed, it is recommended that the driver is installed first, which will reduce the installation time.

Step 1: Installing PIO-D48 series card driver on your computer first.



For detailed information about the driver installation, please refer to [Chapter 4 Software Installation](#).

Step 2: Configuring Card ID by the SW1 DIP-Switch.

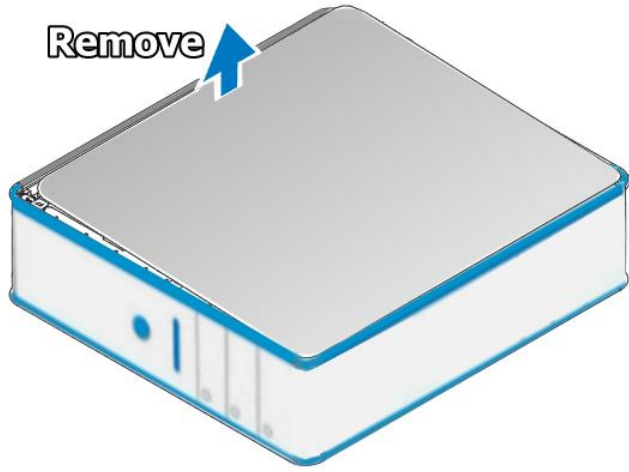


For detailed information about the card ID (SW1), please refer to [Sec. 2.3 Car ID Switch](#).

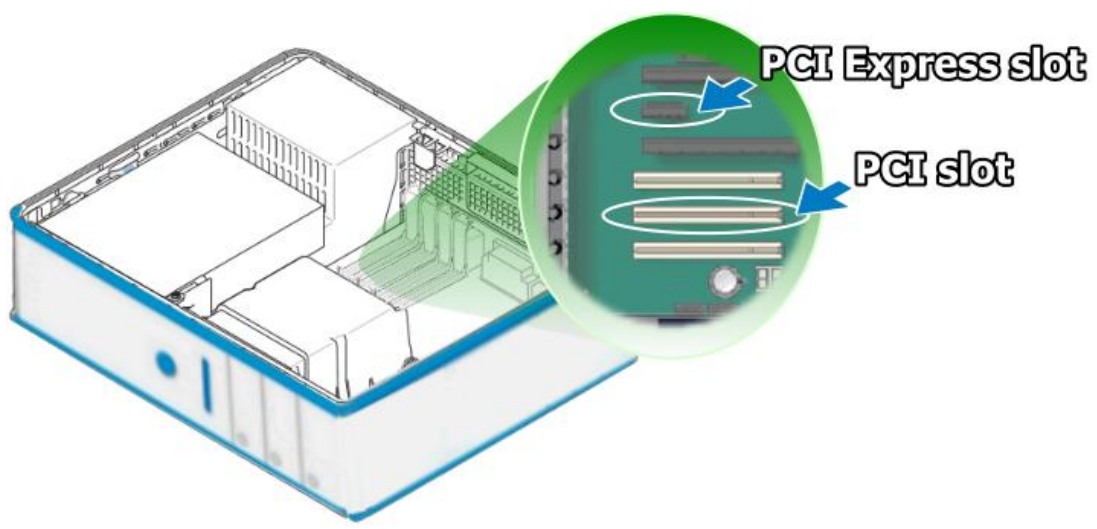


Step 3: Shut down and power off your computer.

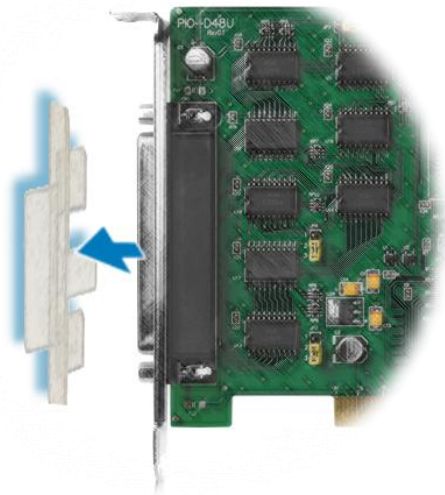
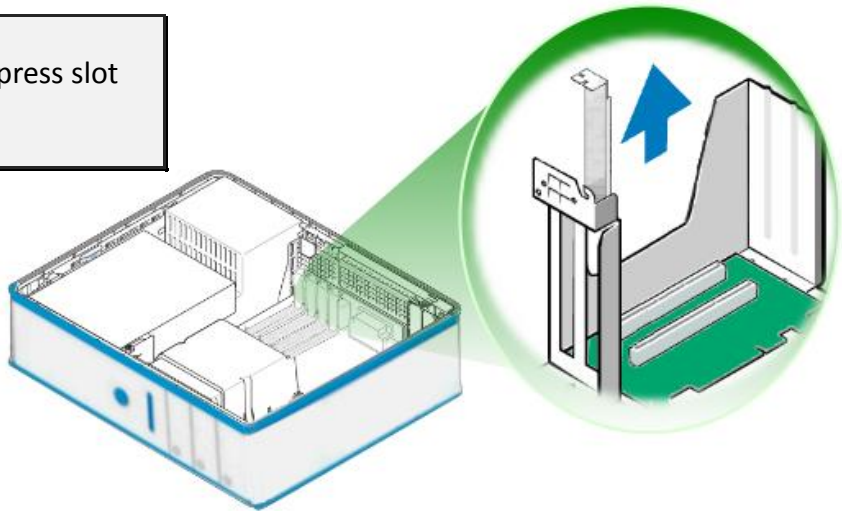
Step 4: Remove all covers from the computer.



Step 5: Select an empty PCI/PCI Express slot.

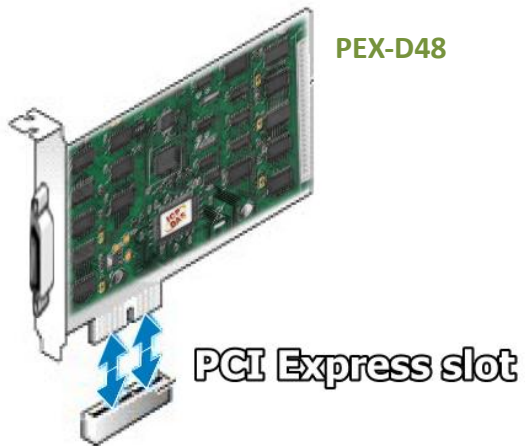
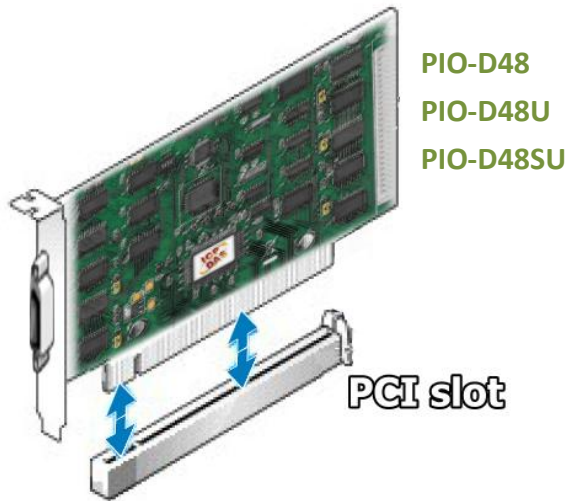


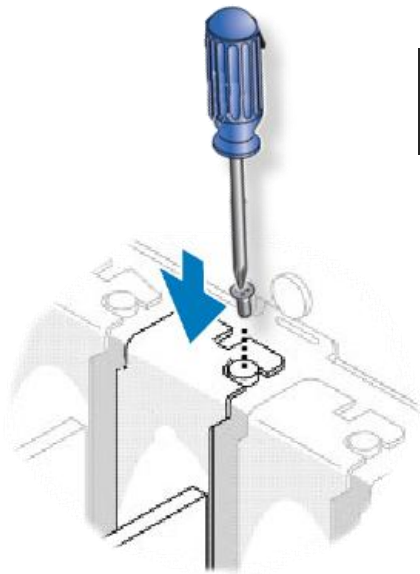
Step 6: Remove the PCI/PCI Express slot cover form the PC.



Step 7: Remove the connector cover form the PIO-D48 series card.

Step 8: Carefully insert your PIO-D48 series card into the PCI/PCI Express slot.

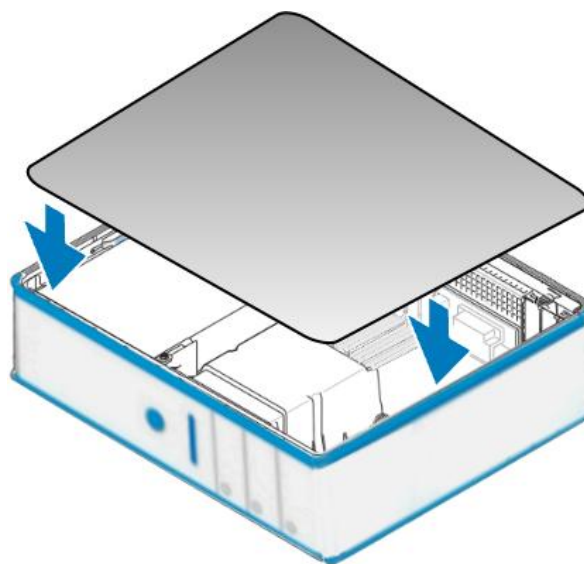




Step 9: Tighten the captive Phillips screw.

Confirm the PIO-D48 series card is mounted on the motherboard.

Step 10: Replace the computer cover.



Step 11: Power on the computer.



Follow the prompt message to finish the Plug&Play steps, please refer to [Chapter 4 Software Installation](#).

4. Software Installation

This chapter provides a detailed description of the process for installing the PIO-D48 series driver and how to verify whether the PIO-D48 was properly installed. PIO-D48 series card can be used on DOS, Linux and Windows 98/ME/2000 and 32-/64-bit XP/2003/Vista/7/8 based systems, and the drivers are fully Plug &Play (PnP) compliant for easy installation.

4.1 Obtaining/Installing the Driver Installer Package

The driver installer package for the PIO-D48 series card can be found on the supplied CD-ROM, or can be obtained from the ICP DAS FTP web site. Install the appropriate driver for your operating system. The location and addresses are indicated in the Table4-1 and Table4-2 below.

Table 4-1: UniDAQ Driver/SDK

OS	Windows 2000 、 32/64-bit Windows XP 、 32/64-bit Windows 2003 、 32/64-bit Windows Vista 、 32/64-bit Windows 7 、 32/64-bit Windows 2008 、 32/64-bit Windows 8
Driver Name	UniDAQ Driver/SDK (unidaq_win_setup_xxxx.exe)
CD-ROM	CD:\\ NAPDOS\\PCI\\UniDAQ\\DLL\\Driver\\
Web Site	http://ftp.icpdas.com/pub/cd/iocard/pci/napdos/pci/unidaq/dll/driver/
Installing Procedure	For detailed information about the UniDAQ driver installation, please refer to UniDAQ DLL Software Manual. The user manual is contained in: CD:\\NAPDOS\\PCI\\UniDAQ\\Manual\\ http://ftp.icpdas.com/pub/cd/iocard/pci/napdos/pci/unidaq/manual/

Table 4-2: PIO-DIO Series Classic Driver

OS	Windows 95/98/ME 、 Windows NT 、 Windows 2000 、 32-bit Windows XP 、 32-bit Windows 2003 、 32-bit Windows Vista 、 32-bit Windows 7
Driver Name	PIO-DIO Series Classic Driver(PIO_DIO_Win__vxxx.exe)
CD-ROM	CD:\\ NAPDOS\\PCI\\PISO-DIO\\DLL_OCX\\Driver\\
Web Site	http://ftp.icpdas.com/pub/cd/iocard/pci/napdos/pci/pio-dio/dll_ocx/driver/
Installing Procedure	<p>For detailed information about the PIO-DIO series classic driver installation, please refer to PIO-DIO series classic driver DLL Software Manual.</p> <p>The user manual is contained in:</p> <p>CD:\\NAPDOS\\PCI\\PISO-DIO\\Manual\\</p> <p>http://ftp.icpdas.com/pub/cd/iocard/pci/napdos/pci/pio-dio/dll_ocx/driver/</p>

4.2 PnP Driver Installation

Power off the computer and install the PIO-D48 series cards. Turn on the computer and Windows 95/98/ME/NT/2000 and 32-/64-bit Windows XP/2003/Vista/7/8 should automatically detect the new PCI device(s) and then ask for the location of the driver files for the hardware. If a problem is encountered during installation, refer to the PnPinstall.pdf file for more information.

4.3 Verifying the Installation

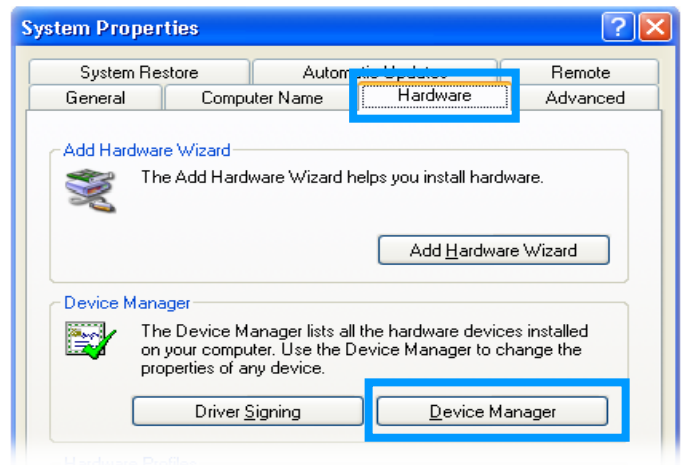
To verify the installation, use the Windows **Device Manager** to view and update the device drivers installed on your computer, and check to ensure that hardware is operating correctly. The following is a description of how access the Device Manager in each of the major versions of Windows. Refer to the appropriate description for your specific operating system to verify the installation.

4.3.1 How do I get into Windows Device Manager?

■ Microsoft Windows 95/98/ME

Step 1: On the desktop right-click on **“My Computer”** and click **“Properties”** or open the **“Control Panel”** and double-click the **“System”** icon.

Step 2: Click the **“Device Manager”** tab.



■ Microsoft Windows 2000/XP

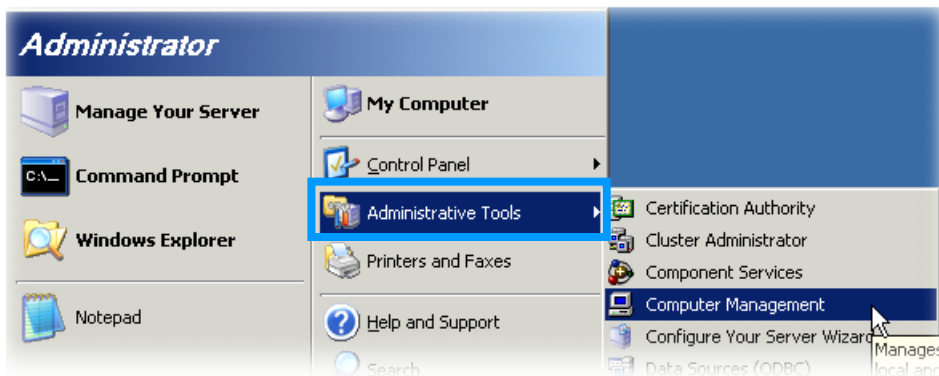
Step 1: Click **“Start”** → then point to **“Settings”** and click → **“Control Panel”**. Double-click the **“System”** icon to open the **“System Properties”** dialog box..

Step 2: Click the **“Hardware”** tab and then click the **“Device Manager”** button.

■ Microsoft Windows 2003

Step 1: Click **“Start”** → point to **“Administrative Tools”**, and then click **“Computer Management”**.

Step 2: From **“System Tools”** in the console tree, click **“Device Manager”**.



■ Microsoft Windows Vista/7

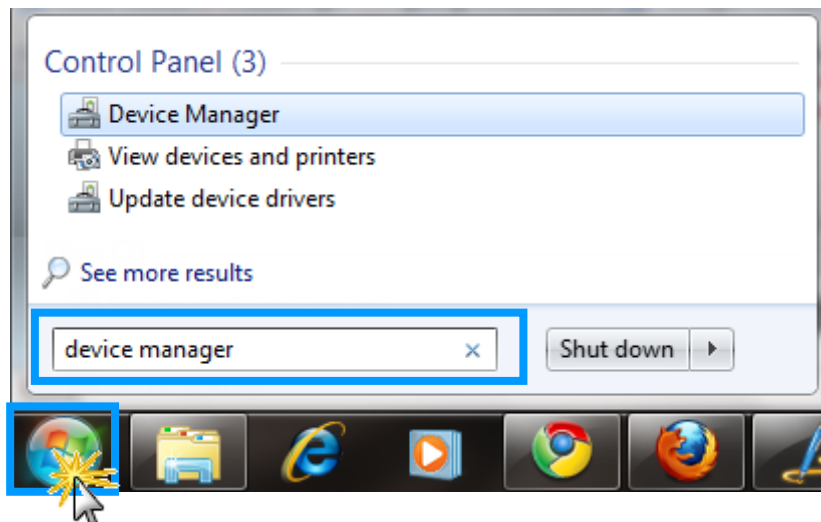
Step 1: Click “**Start**” button, and then click “**Control Panel**”.

Step 2: Click “**System and Maintenance**”, and then click “**Device Manager**”.

Alternatively,

Step 1: Click “**Start**” button.

Step 2: In the **Search field**, type **Device Manager** and the press Enter.



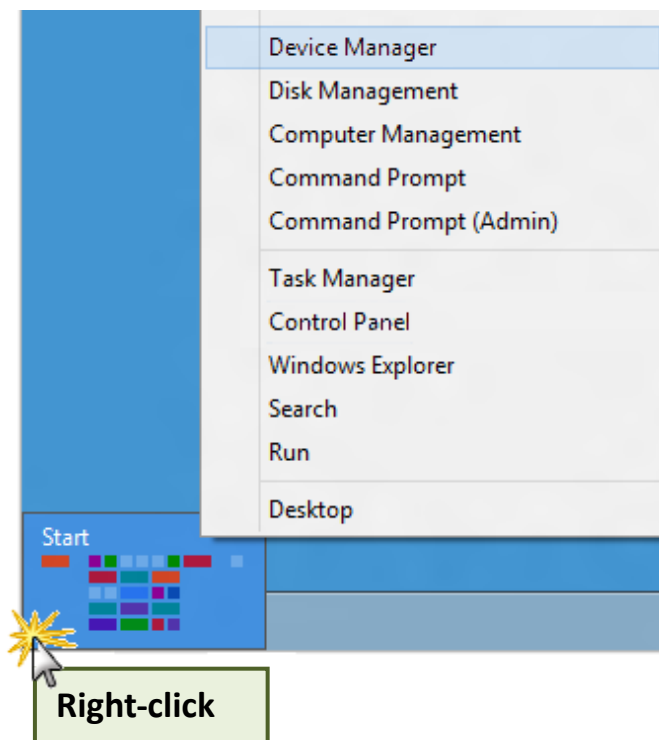
Note that Administrator privileges are required for this operation. If you are prompted for an administrator password or confirmation, type the password or provide confirmation.

■ Microsoft Windows 8

Step 1: To display the **Start screen icon** from the desktop view, simply hover the mouse cursor over the **bottom-left corner** of screen.

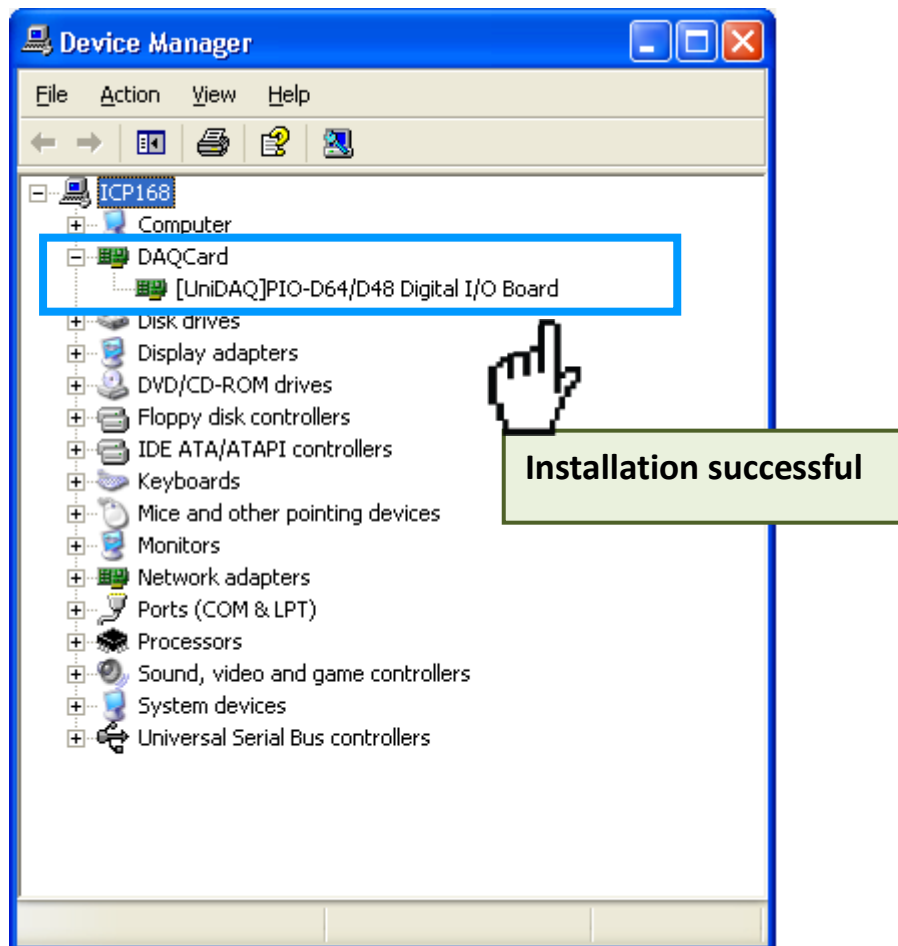
Step 2: **Right-click** the Start screen icon then click “**Device Manager**”.

Alternatively, press [Windows Key] +[X] to open the Start Menu, and select Device Manager from the options list.



4.3.2 Check that the Installation

Check the PIO-D48 series card which listed correctly or not, as illustrated below.



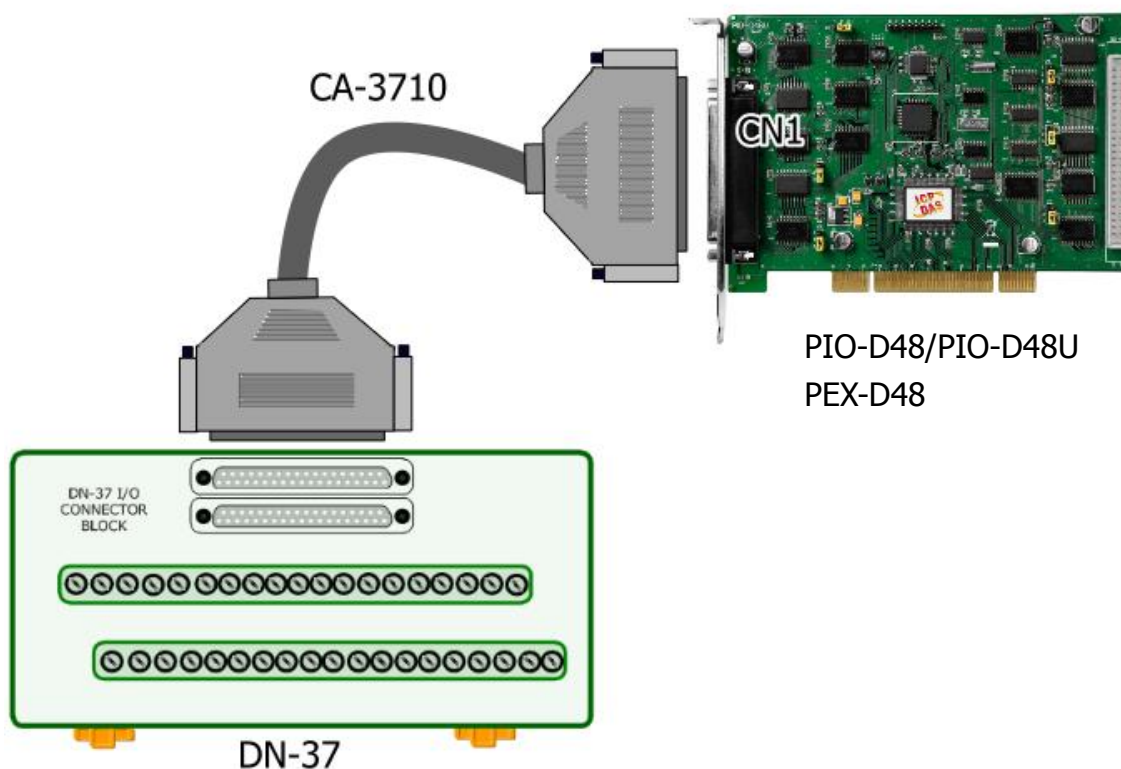
5. Testing PIO-D48 Series Card

This chapter can give you the detail steps about self-test. In this way, user can confirm that PIO-D48 series card well or not. Before the self-test, you must complete the hardware and driver installation. For detailed information about the hardware and driver installation, please refer to [Chapter 3 Hardware Installation](#) and [Chapter 4 Software Installation](#).

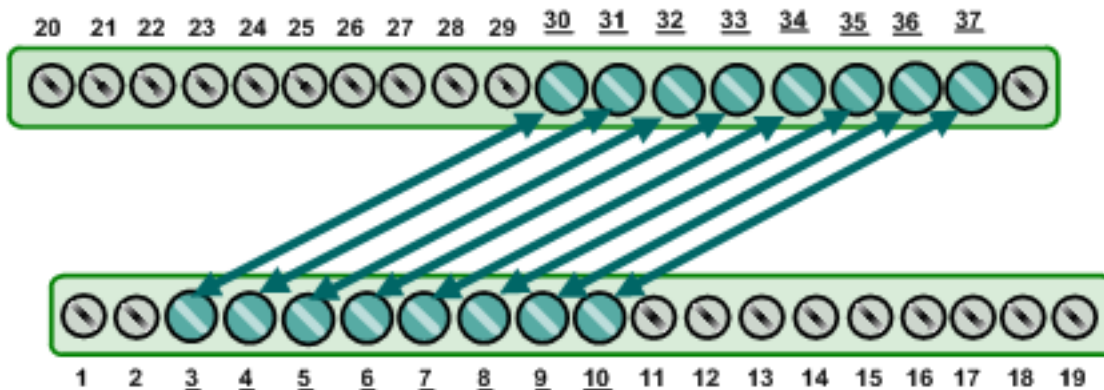
5.1 Self-Test Wiring

■ *PIO-D48(U) and PEX-D48:*

1. Use the DN-37 (optional) to connect the CN1 on the PIO-D48(U) or PEX-D48 card.

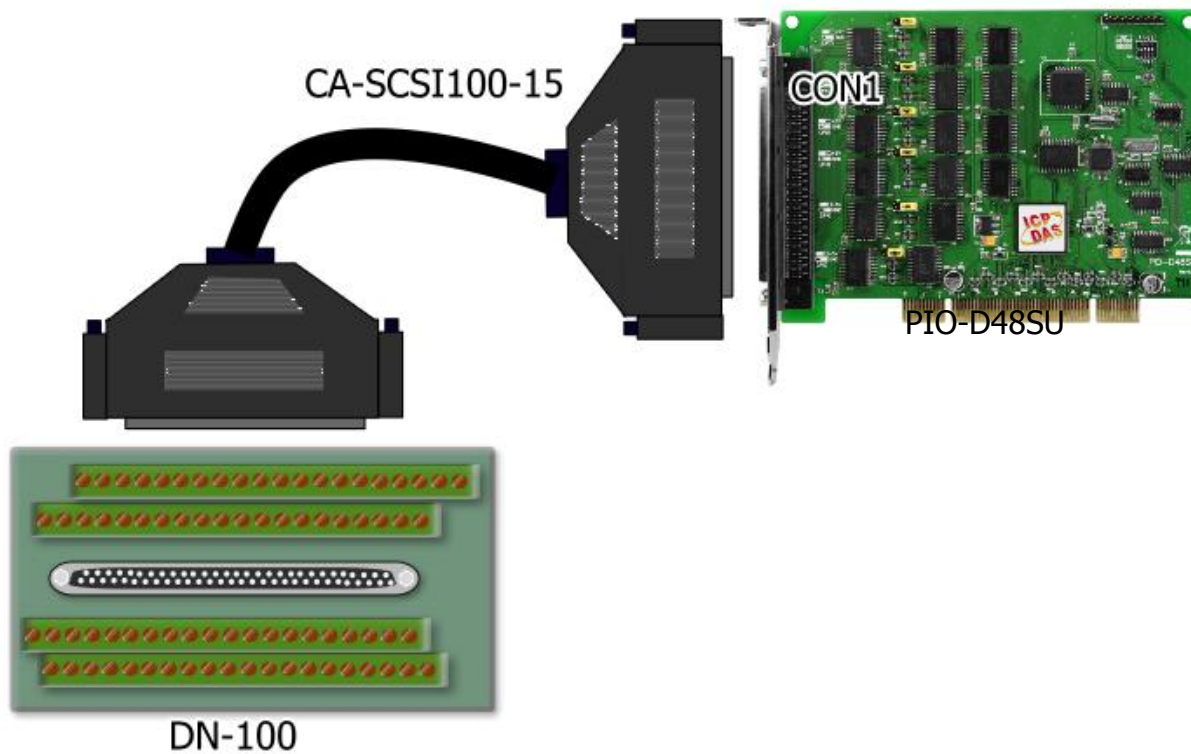


2. Connect the Port0 (PA0 ~ PA7) with Port1 (PB0 ~ PB7).

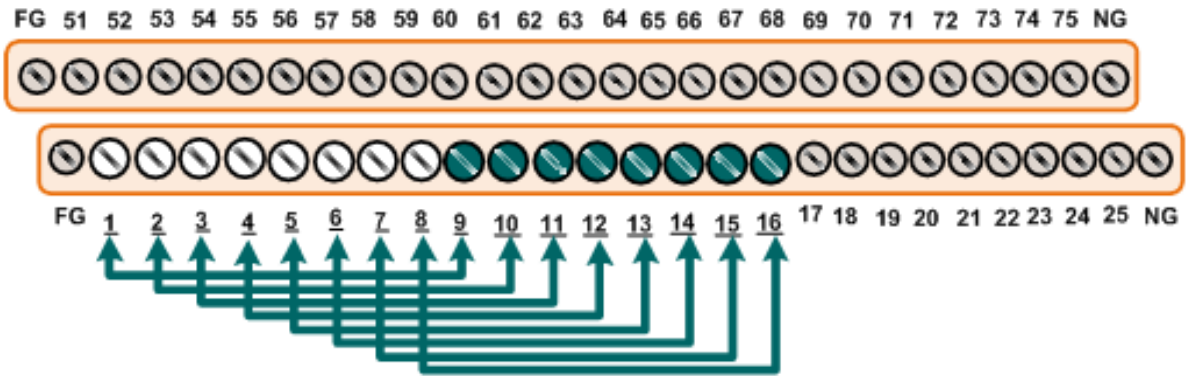


■ **PIO-D48SU:**

1. Use DN-100 wiring terminal board (optional) to connect the CON1 on the PIO-D48SU card.



2. Connect the Port0 (PA00 ~ PA07) with Port1 (PB00 ~ PB07).



5.2 Execute the Test Program

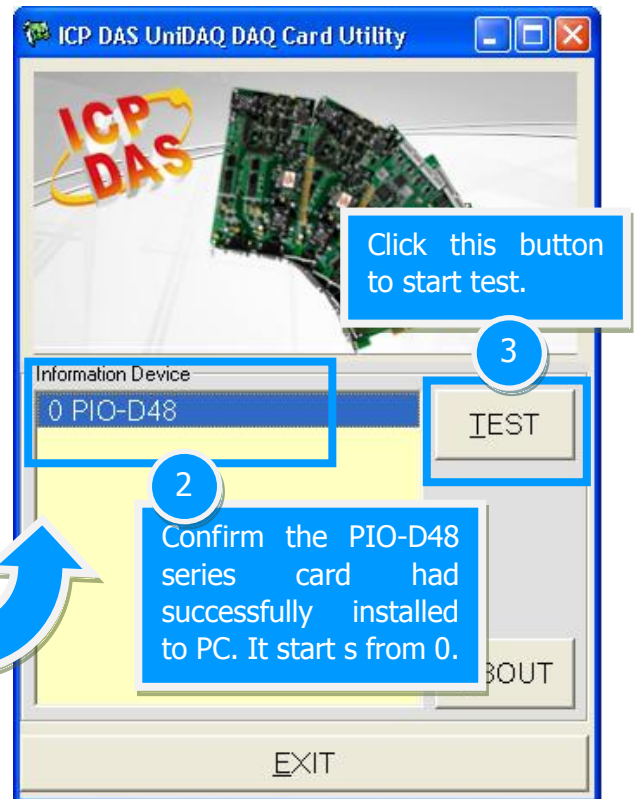
The following example use UniDAQ driver to perform self-test. If you install the PIO-DIO series classic driver, please refer to Quick Start Guide of the PIO-D48

(http://ftp.icpdas.com/pub/cd/iocard/pci/napdos/pci/pio-dio/manual/quickstart/d48/pio-d48_quickstart_eng.pdf) to execute the self-test.

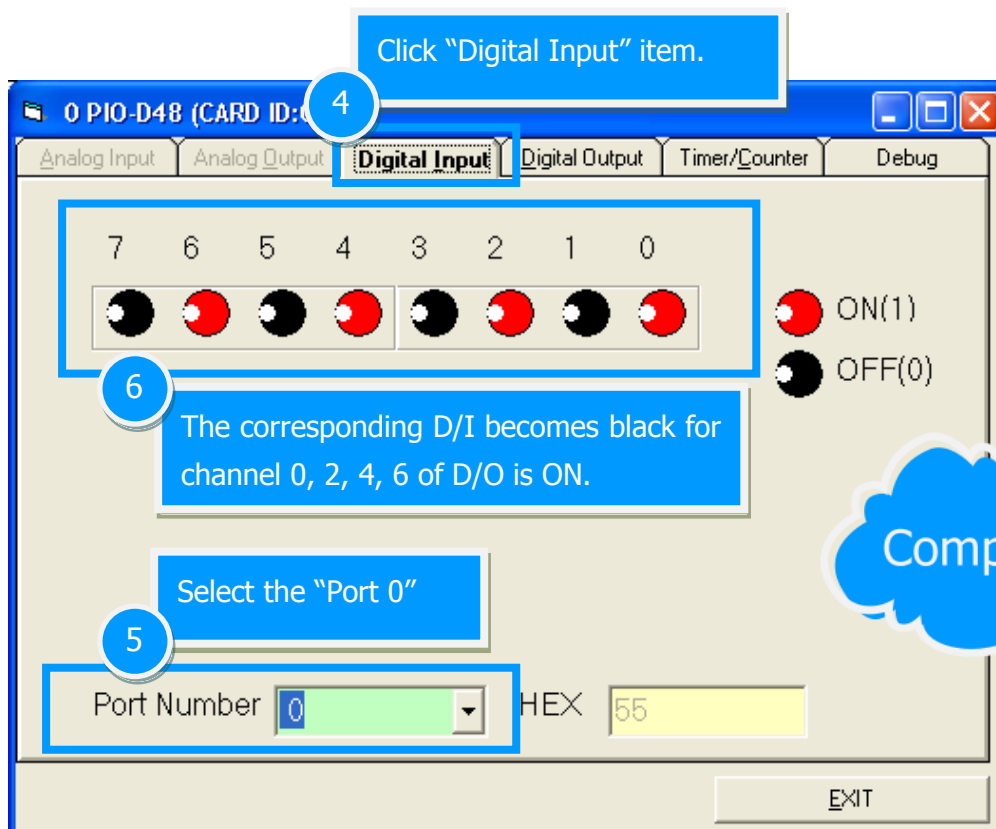
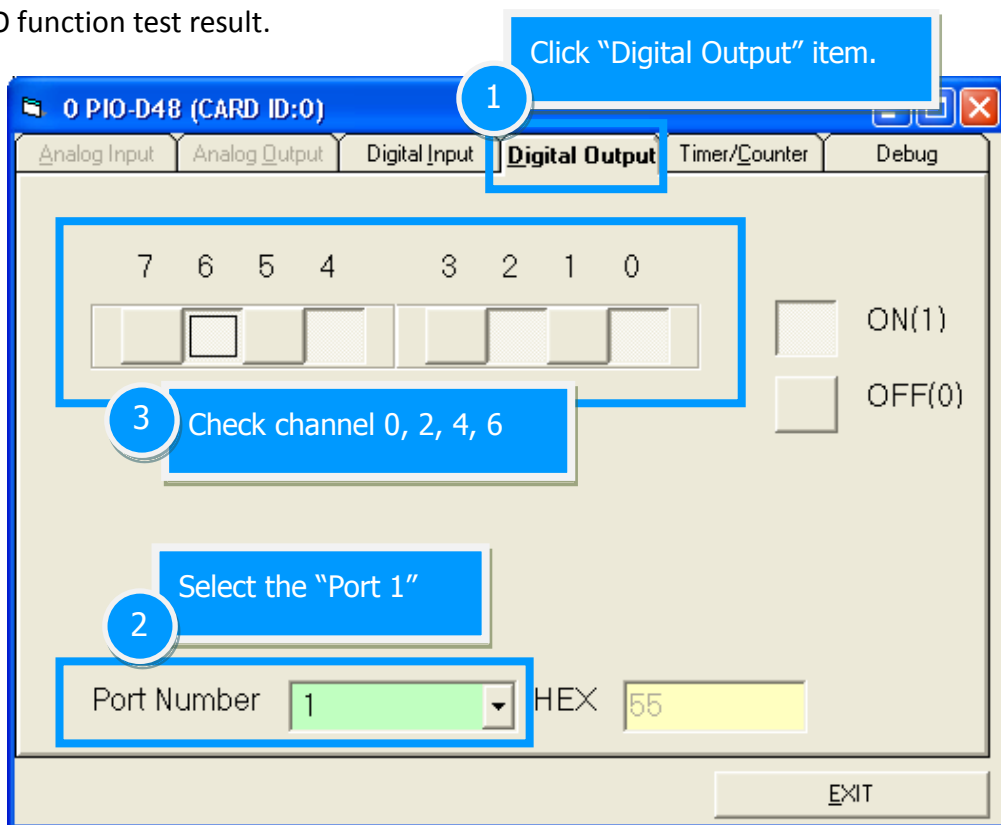
3. Execute the UniDAQ Utility Program. The UniDAQ Utility.exe will be placed in the default path after completing installation.

Default Path: C:\ICPDAS\UniDAQ\Driver\

Double click the “UniDAQUtility.exe”



4. Get DIO function test result.



6. I/O Control Register

6.1 How to Find the I/O Address

The plug&play BIOS will assign a proper I/O address to every PIO/PISO series card in the power-on stage. The fixed IDs for the PIO-D48 series cards are given as follows:

Table 6-1:

PIO-D48(U) (Rev 1.x)		PIO-D48(U)/PEX-D48 (Rev 2.0 or above)	
Vendor ID	0xE159	Vendor ID	0xE159
Device ID	0x0002	Device ID	0x0001
Sub-Vendor ID	0x80	Sub-Vendor ID	0x0080
Sub-Device ID	0x01	Sub-Device ID	0x01
Sub-Aux ID	0x30	Sub-Aux ID	0x30

Table 6-2:

PIO-D48SU (Rev 1.0 or above)	
Vendor ID	0xE159
Device ID	0x0001
Sub-Vendor ID	0x0080
Sub-Device ID	0x0001
Sub-Aux ID	0x0030

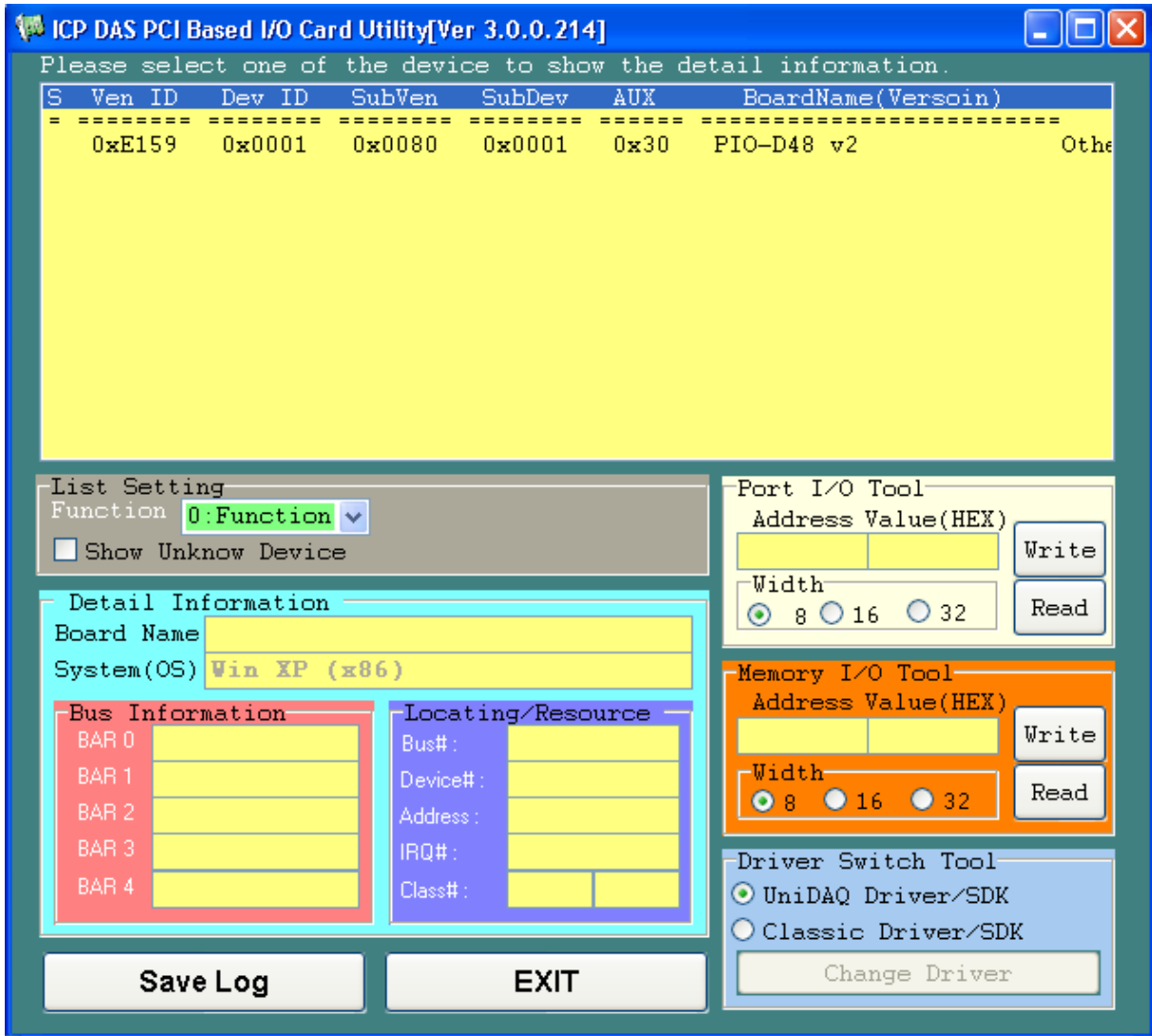
The PIO_PISO.EXE utility program will detect and present all information for PIO/PISO cards installed in the PC, as shown in the following Figure6-1. Details of how to identify the PIO-D48 series cards of ICPDAS data acquisition boards based on the **Sub-vendor**, **Sub-device** and **Sub-Aux ID** are given in Table 6-1 and 6-2.

The PIO_PISO.exe utility is located on the CD as below and is useful for all PIO/PISO series cards.

CD:\NAPDOS\PCI\Utility\Win32\PIO_PISO\

http://ftp.icpdas.com/pub/cd/iocard/pci/napdos/pci/utility/win32/pio_piso/

Figure 6-1:



6.2 The Assignment of I/O Address

Use Card ID for new users.

The Plug&Play BIOS will assign the proper I/O address to a PIO/PISO series card. If there is only one PIO/PISO board, the user can identify the board as card_0. If there are two PIO/PISO boards in the system, it is very difficult to identify which board is card_0. The software driver can support a maximum of 16 boards. Therefore, the user can install 16 PIO/PSIO series cards onto one PC system. The methods used to find and identify card_0 and card_1 is demonstrated below.

The simplest way to identify which card is card_0 is to use wSlotBus and wSlotDevice in the following manner:

Step 1: Remove all PIO-D48 series boards from the PC.

Step 2: Install one PIO-D48 series onto the PC's PCI_slot1, run PIO_PISO.EXE.

Then record the wSlotBus1 and wSlotDevice1 information.

Step 3: Remove all PIO-D48 series boards from the PC.

Step 4: Install one PIO-D48 series into the PC's PCI_slot2 and run PIO_PISO.EXE.

Then record the wSlotBus2 and wSlotDevice2 information.

Step 5: Repeat Steps(3) and (4) for every PCI_slot and record all information from wSlotBus and wSlotDevice.

The records may look similar to the table follows:

Table 6-3:

PC's PCI Slot	wSlotBus	wSlotDevice
Slot_1	0	0x07
Slot_2	0	0x08
Slot_3	0	0x09
Slot_4	0	0x0A
PCI-BRIDGE		
Slot_5	1	0x0A
Slot_6	1	0x08
Slot_7	1	0x09
Slot_8	1	0x07

The above procedure will record all the wSlotBus and wSlotDevice information on a PC. These values will be mapped to this PC's physical slot and this mapping will not be changed for any PIO/PISO cards. Therefore, this information can be used to identify the specified PIO/PISO card by following steps:

Step1: Using the wSlotBus and wSlotDevice information from Table 6-3.

Step2: Enter the board number into PIO_GetConfigAddressSpace(...) function to get the information for a specific card, especially the wSlotBus and wSlotDevice details.

Step3: Identify the specific PIO/PISO card by comparing the data of the wSlotBus and wSlotDevice from Step1 and Step2.

Note: that normally the card installed in slot 0 is card0 and the card installed in slot1 is card1 for PIO/PISO series cards.

6.3 The I/O Address Map

The I/O address for PIO-D48 series cards are automatically assigned by the main board ROM BIOS. The I/O address may also be re-assigned by the user. It is strongly recommended that users do not change the I/O address. The Plug&Play BIOS will effectively perform the assignment of proper I/O addresses to each PIO-D48 series card. The I/O address for the PIO-D48/D48U/D48SU and PEX-D48 are given in the table below, all of which are based on the base address of each card.

Table 6-4: Refer to [Sec. 6.1](#) for more information about wBase.

Address	Read	Write
wBase+0	-	RESET\ Control Register
wBase+5	INT mask control register	Same
wBase+7	Aux pin status register	Same
wBase+0x2a	INT polarity control register	Same
wBase+0xc0	Read Port0 (PA)	Write Port0 (PA)
wBase+0xc4	Read Port1 (PB)	Write Port1 (PB)
wBase+0xc8	Read Port2 (PC)	Write Port2 (PC)
wBase+0xcc	-	Write Control Word (Port 0/1/2)
wBase+0xd0	Read Port3 (PA)	Write Port3 (PA)
wBase+0xd4	Read Port4 (PB)	Write Port4 (PB)
wBase+0xd8	Read Port5 (PC)	Write Port5 (PC)
wBase+0xdc	-	Write Control Word (Port 3/4/5)
wBase+0xe0	Read 8254-Counter0	Write 8254-Counter0
wBase+0xe4	Read 8254-Counter1	Write 8254-Counter1
wbase+0xe8	Read 8254-Counter2	Write 8254-Counter2
wBase+0xec	Read 8254 Control Word	Writer 8254 Control Word
wBase+0xf0	Read Clock/Int Control Word	Write Clock/Int Control Word
wBase+0xf4	Read Card ID	-

6.3.1 RESET\ Control Register

(Read/Write): wBase+0

Bit 7	Bit 6	Bit 5	Bit 4	Bit 3	Bit 2	Bit 1	Bit 0
Reserved	Reserved	Reserved	Reserved	Reserved	Reserved	Reserved	RESET\

When the PC's power is first turned on, RESET\ signal is in a Low-state. **This will disable all D/I/O operations.** The user has to set the RESET\ signal to a High-state before any D/I/O command applications are initiated.

For example:

```

outputb (wBase,1);      /* RESET\=High → all D/I/O are enable now */
outputb (wBase,0);     /* RESET\=Low → all D/I/O are disable now */
    
```

6.3.2 INT Mask Control Register

(Read/Write): wBase+5

Bit 7	Bit 6	Bit 5	Bit 4	Bit 3	Bit 2	Bit 1	Bit 0
0	0	0	0	EN3	EN2	EN1	EN0

EN0=0 → Disable INT_CHAN_0 as an interrupt signal (Default).

EN0=1 → Enable INT_CHAN_0 as an interrupt signal

EN1=0 → disable INT_CHAN_1 as a interrupt signal (Default)

EN1=1 → enable INT_CHAN_1 as a interrupt signal

EN2=0 → disable INT_CHAN_2 as a interrupt signal (Default)

EN2=1 → enable INT_CHAN_2 as a interrupt signal

EN3=0 → disable INT_CHAN_3 as a interrupt signal (Default)

EN3=1 → enable INT_CHAN_3 as a interrupt signal

For example:

```

outportb(wBase+5,0);    /*Disable all interrupt */
outportb(wBase+5,1);    /* Enable interrupt of INT_CHAN_0 */
outportb(wBase+5,2);    /* Enable interrupt of INT_CHAN_1 */
outportb(wBase+5,4);    /* Enable interrupt of INT_CHAN_2 */
outportb(wBase+5,8);    /* Enable interrupt of INT_CHAN_3 */
outportb(wBase+5,0x0f); /* Enable all four channels of interrupt */
    
```

6.3.3 Aux Status Register

(Read/Write): wBase+7

Bit 7	Bit 6	Bit 5	Bit 4	Bit 3	Bit 2	Bit 1	Bit 0
AuxID7	AuxID6	AuxID5	AuxID4	IntSate3	IntSate2	IntSate1	IntSate0

IntSate0 = INT_CHAN_0, IntSate1 = INT_CHAN_1, IntSate2 = INT_CHAN_2, IntSate3 = INT_CHAN_3, AuxID7 to 4 = Aux-ID. The IntSate0 to 3 are used as interrupt source. The interrupt service routine has to read this register to identify the interrupt source. Refer to [Sec. 2.7](#) for more information.

6.3.4 Interrupt Polarity Register

(Read/Write): wBase+0x2A

Bit 7	Bit 6	Bit 5	Bit 4	Bit 3	Bit 2	Bit 1	Bit 0
0	0	0	0	INV3	INV2	INV1	INV0

This register provides a function to control invert or non-invert for the interrupt signal source. A detailed application example is given below.

INV0=0 → select the inverted signal from interrupt_channel_0

INV0=1 → select the non-inverted signal from interrupt_channel_0

INV1= Control interrupt channel_1

INV2= Control interrupt channel_2

INV3= Control interrupt channel_3

For example:

```
/* select the non-inverted input from all 4 channel */
```

```
outportb(wBase+0x2a,0x0f);
```

```
/* select the inverted input from all 4 channel */
```

```
outportb(wBase+0x2a,0x00);
```

```
/* select the inverted input of INT_CHAN_0 */
```

```
/* select the non-inverted input from the others */
```

```
outportb(wBase+0x2a,0x0e);
```

```
/* select the inverted input of INT_CHAN_0& INT_CHAN_1 */
```

```
/* select the non-inverted input from the others */
```

```
outportb(wBase+0x2a,0x0c);
```

Refer to [Sec. 2.7](#) and DEMO5.C (DOS) for more information.

6.3.5 Read/Write I/O Port

■ Control Word

(Read/Write): wBase+0xcc/ 0xdc

Bit 7	Bit 6	Bit 5	Bit 4	Bit 3	Bit 2	Bit 1	Bit 0
1	0	0	PA	PC-H	0	PB	PC-L

These are six 8-bit I/O ports in the PIO-D48 series. Every I/O port can be programmed to be a D/I or a D/O port based on the control word settings. All six ports are configured as D/I ports when the power is first turned on.

(Read/Write) → wBase+0xcc = Set Input/Output mode for the port-0/1/2

(Read/Write) → wBase+0xdc = Set Input/Output mode for the port-3/4/5

PA/PB/PC-H/PC-L: **1** → Input port; **0** → Output port

PC-H: high nibble of PC

PC-L: Low nibble of PC

■ Read/Write 8-bit Data

(Read/Write): wBase+0xc0/ 0xc4/ 0xc8/ 0xd0/ 0xd4/ 0xd8

Bit 7	Bit 6	Bit 5	Bit 4	Bit 3	Bit 2	Bit 1	Bit 0
D7	D6	D5	D4	D3	D2	D1	D0

(Read/Write)

wBase+0xc0= Port-0 (PA)

wBase+0xc4= Port-1 (PB)

wBase+0xc8= Port-2 (PC)

wBase+0xd0= Port-3 (PA)

wBase+0xd4= Port-4 (PB)

wBase+0xd8= Port-5 (PC)

For example:

```
outputb(wBase+0xcc,0x80);    /* set output mode for the port-0/1/2 */
outputb(wBase+0xc0,V1);     /* write to port_0 (PA) */
outputb(wBase+0xc4,V2);     /* write to port_1 (PB) */
outputb(wBase+0xc8,V3);     /* write to port_2 (PC) */

outputb(wBase+0xdc,0x9B);   /* set input mode for the port-3/4/5 */
V1=inportb(wBase+0xd0);     /* read from port_3 (PA) */
V2=inportb(wBase+0xd4);     /* read from port_4 (PB) */
V3=inportb(wBase+0xd8);     /* read from port_5 (PC) */
```



Note:

The I/O speed is depending on I/O card, bus speed, CPU speed and system loading. Any condition changes may cause the I/O speed different.

6.3.6 Read/Write 8254

■ 8254 Control Word

(Read/Write): wBase+0xec

Bit 7	Bit 6	Bit 5	Bit 4	Bit 3	Bit 2	Bit 1	Bit 0
SC1	SC0	RL1	RL0	M2	M1	M0	BCD

BCD	
0	Binary Count
1	BCD Count

M2	M1	M0	
0	0	0	Interrupt on terminal count
0	0	1	Programmable one-shot
0	1	0	Rate generator
0	1	1	Square-wave generator
1	0	0	software triggered pulse
1	0	1	Hardware triggered pulse

RL1	RL0	
0	0	Counter latch instruction
0	1	Read/write low counter byte only
1	0	Read/write high counter byte only
1	1	Read/write low counter byte first, then high counter

SC1	SC0	
0	0	Counter0
0	1	Counter1
1	0	Counter2
1	1	Readback command

■ Read/Write 8-bit data of 8254

(Read/Write): wBase+0xe0/ 0xe4/ 0xe8

Bit 7	Bit 6	Bit 5	Bit 4	Bit 3	Bit 2	Bit 1	Bit 0
D7	D6	D5	D4	D3	D2	D1	D0

(Read/Write): wBase+0xec= 8254 control word

(Read/Write): wBase+0xe0= 8254-counter-0

(Read/Write): wBase+0xe4= 8254-counter-1

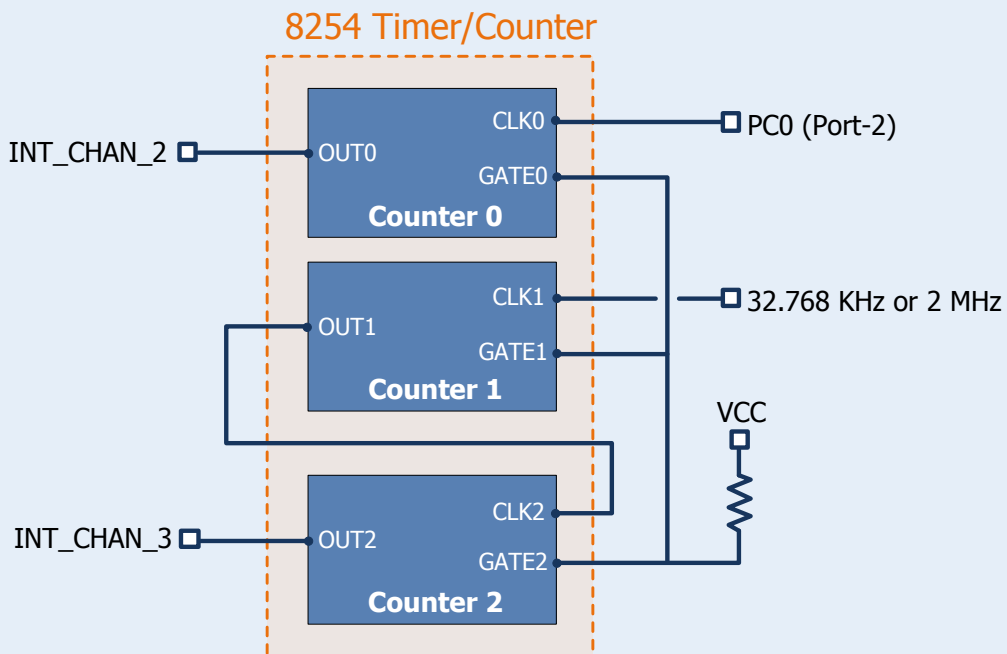
(Read/Write): wBase+0xe8= 8254-counter-2

For example:

```

outportb(wBase+0xec,0x30);    /* Counter0, mode-0 */
outportb(wBase+0xe0,0xff);    /* write to low byte first */
outportb(wBase+0xe0,0xff)    /* write to high byte second */
                               /* Then Counter0 will down count from 0xffff */
    
```

■ The configuration of 8254 counter:



Refer to the following demo programs for more related information:

- Int2 Demo** Counter0 (Using interrupt INT_CHAN_2)
- Int3 Demo** Counter1 ~ Counter 2 (Using interrupt Int_CHAN_3)

6.3.7 Read/Write Clock/Int Control Register

(Read/Write): wBase+0xf0

Bit 7	Bit 6	Bit 5	Bit 4	Bit 3	Bit 2	Bit 1	Bit 0
0	0	CTRL-D5	CTRL-D4	CTRL-D3	CTRL-D2	CTRL-D1	CTRL-D0

CTRL-D0: timer source CLK1 selection (Refer to [Sec. 6.3.8](#))

0 → 2 MHz

1 → 32.768 KHz

CTRL-D1: invert/non-invert the PC0 of port-2 (Refer to [Sec. 2.7.4](#))

0 → non-invert

1 → invert

CTRL-D3, CTRL-D2: interrupt source select (Refer to [Sec. 2.7.2](#))

01 : disable PC3 & !PC7 (of port-2) as interrupt source

10 : INT_CHAN_0=PC3 of port-2

00 : INT_CHAN_0=PC3 & !PC7 of port-2

CTRL-D5, CTRL-D4: interrupt source select (refer to [Sec. 2.7.3](#))

01 : disable PC3 & !PC7 (of port-5) as interrupt source

10 : INT_CHAN_1=PC3 of port-5

00 : INT_CHAN_1=PC3&!PC7 of port-5

6.3.8 Read Card ID Register

(Read): wBase+0xf4

Bit 7	Bit 6	Bit 5	Bit 4	Bit 3	Bit 2	Bit 1	Bit 0
0	0	0	0	ID3	ID2	ID1	ID0

For example:

```
wCardID=inportb(wBase+0xf4); /* Read Card ID */
```

Note: The Card ID function is only supported by the PIO-D48U/D48SU and PEX-D48 (Ver. 1.0 or above)

7. Demo Programs

7.1 Demo Program for Windows

All demo programs will not work properly if the DLL driver has not been installed correctly. During the DLL driver installation process, the install-shields will register the correct kernel driver to the operation system and copy the DLL driver and demo programs to the correct position based on the driver software package you have selected (Win98/Me/NT/2K and 32-/64-bit Win XP/2003/Vista/7/8). Once driver installation is complete, the related demo programs and development library and declaration header files for different development environments will be presented as follows.

■ Demo Program for PIO-DIO Series Classic Driver

The demo program is contained in:

CD:\NAPDOS\PCI\PIO-DIO\DLL_OCX\Demo\

http://ftp.icpdas.com/pub/cd/iocard/pci/napdos/pci/pio-dio/dll_ocx/demo/

⊕ BCB4 → for Borland C++ Builder 4 PIODIO.H → Header files PIODIO.LIB → Linkage library for BCB only	⊕ Delphi4 → for Delphi 4 PIODIO.PAS → Declaration files
⊕ VC6 → for Visual C++ 6 PIODIO.H → Header files PIODIO.LIB → Linkage library for VC only	⊕ VB6 → for Visual Basic 6 PIODIO.BAS → Declaration files
⊕ VB.NET2005 → for VB.NET2005 PIODIO.vb → Visual Basic Source files	⊕ CSharp2005 → for C#.NET2005 PIODIO.cs → Visual C# Source files

For detailed information about the DLL function of the PIO-D48 series, please refer to PIO-DIO DLL Software Manual (CD:\NAPDOS\PCI\PIO-DIO\Manual\)

■ Demo Program for UniDAQ SDK Driver

The demo program is contained in:

CD:\NAPDOS\PCI\UniDAQ\DLL\Demo\

<http://ftp.icpdas.com/pub/cd/iocard/pci/napdos/pci/unidaq/dll/demo/>

⊕ BCB6 → for Borland C++ Builder 6 UniDAQ.H → Header files UniDAQ.LIB → Linkage library for BCB only	⊕ Delphi6 → for Delphi 6 UniDAQ.PAS → Declaration files
⊕ VB6 → for Visual Basic 6 UniDAQ.BAS → Declaration files	⊕ CSharp2005 → for C#.NET2005 UniDAQ.cs → Visual C# Source files
⊕ VC6 → for Visual C++ 6 UniDAQ.H → Header files UniDAQ.LIB → Linkage library for VC only	⊕ VB.NET2005 → for VB.NET2005 UniDAQ.vb → Visual Basic Source files
⊕ VC.NET2005 → for VC.NET2005 (32-bit) UniDAQ.H → Header files UniDAQ.LIB → Linkage library for VC only	⊕ VC.NET2005 → for VC.NET2005 (64-bit) UniDAQ.H → Header files UniDAQ.LIB → Linkage library for VC only

For detailed information about the DLL function and demo program of the UniDAQ, please refer to UniDAQ DLL Software Manual (CD:\NAPDOS\PCI\UniDAQ\Manual\)

7.2 Demo Program for DOS

The demo program is contained in:

CD:\NAPDOS\PCI\PIO-DIO\DOS\D48\PIOD48\

<http://ftp.icpdas.com/pub/cd/iocard/pci/napdos/pci/pio-dio/dos/d48/piod48/>

- ⊕ \TC*. * → for Turbo C 2.xx or above
- ⊕ \MSC*. * → for MSC 5.xx or above
- ⊕ \BC*. * → for BC 3.xx or above

- ⊕ \TC\LIB*. * → for TC Library
- ⊕ \TC\DEMO*. * → for TC demo program
- ⊕ \TC\DIAG*. * → for TC diagnostic program

- ⊕ \TC\LIB\PIO.H → TC Declaration File
- ⊕ \TC\LIB\TCPIO_L.LIB → TC Large Model Library File
- ⊕ \TC\LIB\TCPIO_H.LIB → TC Huge Model Library File

The list of demo programs:

DEMO1: D/O Demo

DEMO2: D/I Demo

DEMO3: D/I/O Demo

DEMO4: Timer Interrupt of INT_CHAN_3

DEMO5: Event Counter (no interrupt) of INT_CHAN_2 (init_HIGH & active_Low)

DEMO6: Event Counter (no interrupt) of INT_CHAN_2 (init_Low & active_HIGH)

DEMO7: Down-Counter (interrupt) of INT_CHAN_2 (init_HIGH & active_Low)

DEMO8: Interrupt demo of INT_CHAN_0 (PC7 of Port2 don't care)

DEMO9: Interrupt demo of INT_CHAN_0 (PC7 of Port2 interrupt is enable)

DEMO10: Interrupt demo of INT_CHAN_1 (PC7 of Port5 interrupt is disable)

DEMO11: Interrupt demo of INT_CHAN_0 & INT_CHAN_1

For detailed information about the DLL function of the DOS, please refer to PIO-DIO DLL Software Manual (CD:\NAPDOS\PCI\PIO-DIO\Manual\)

Appendix: Daughter Board

A1. DB-37, DN-37, DN-50 and DN-100

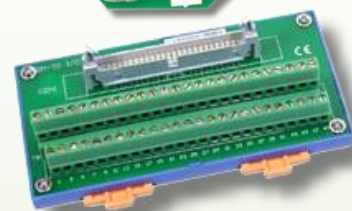
- **DB-37:** The DB-37 is a general purpose daughter board for D-sub 37 pins. It is designed for easy wire connection via pin-to-pin. Use a 37-pin cable (e.g. CA-3710 ,etc.) to connect DB-37 to CON1 of the PIO-D48(U)/PEX-D48.



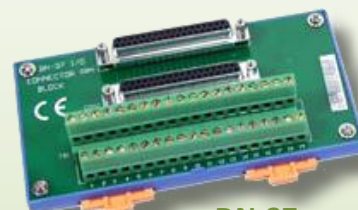
DB-37

- **DN-37 and DN-50:** The DN-37 is a general purpose daughter board for DB-37 pins with DIN-Rail Mountings. The DN-50 is designed for 50-pin flat-cable headers with DIN-Rail mountings. They are also designed for easy wire connection via pin-to-pin.

Use a 37-pin cable (e.g. CA-3710 ,etc.) to connect to CN1 of the PIO-D48(U) and PEX-D48 by DN-37, and then use a 50-pin cable (e.g. CA-5002 ,etc.) to connect to CN2 by DN-50.

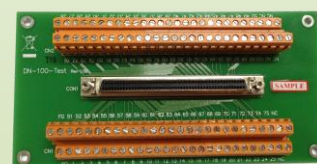


DN-50



DN-37

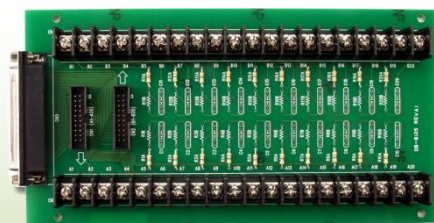
- **DN-100:** The DN-100 is a general purpose daughter board for SCSI II 100 pins. It is designed for easy wire connection via pin-to-pin. Use a 100-pin SCSI II cable (e.g. CA-SCSI100-15 ,etc.) to connect DN-100 to CON1 of the PIO-D48SU.



DN-100

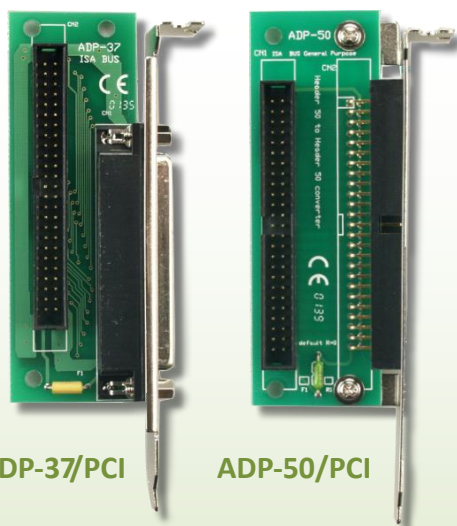
A2. DB-8125

The DB-8125 is a general purpose screw terminal board. It is designed for easy wire connection. The DB-8125 consists of one DB-37 and two 20-pin flat-cable headers. Use a 37-pin cable (e.g. CA-3710 ,etc.) to connect DB-8125 to CON1 of the PIO-D48(U) and PEX-D48.



DB-8125

A3. ADP-37/PCI and ADP-50/PCI

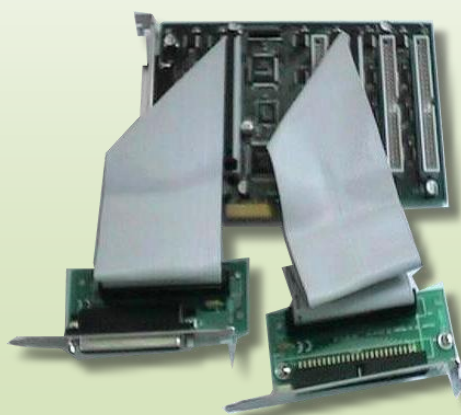


ADP-37/PCI

ADP-50/PCI

The ADP-37/PCI and ADP-50/PCI are extender for the 50-pin header. The one side of the ADP-37/PCI or the ADP-50/PCI can be connected to a 50-pin header. Note: that ADP-37/PCI is 50-pin header to DB-37 extender and ADP-50/PCI is 50-pin header to 50-pin header extender.

The other side can be mounted onto the PC chassis as is depicted by the following:



A4. DB-24P and DB-24PD Isolated Input Board

The DB-24P is a 24-channel isolated digital input daughter board. The optically isolated inputs of the DB-24P consist of a bi-directional optocoupler with a resistor for current sensing. You can use the DB-24P to sense DC signals from TTL levels up to 24 V or use the DB-24P to sense a wide range of AC signals. You can also use this board to isolate the computer from large common-mode voltage, ground loops and transient voltage spikes that often occur in industrial environments, as shown in Figure A4-1. Table A4-1 is the comparison of DB-24P and DB-24PD.

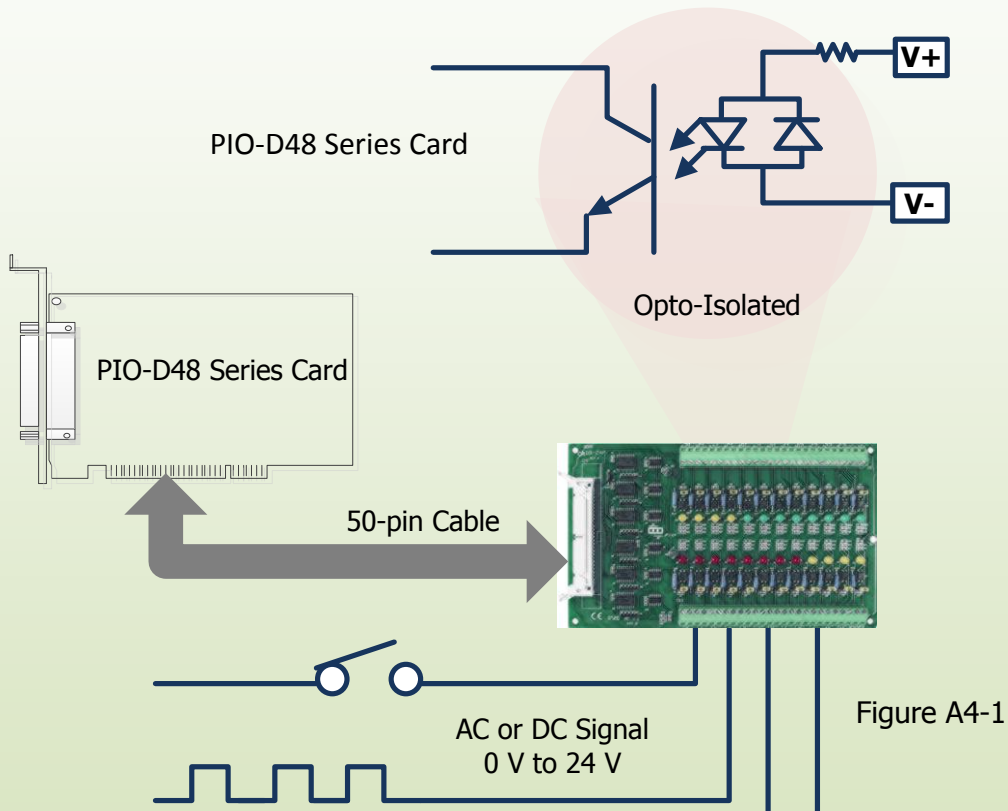
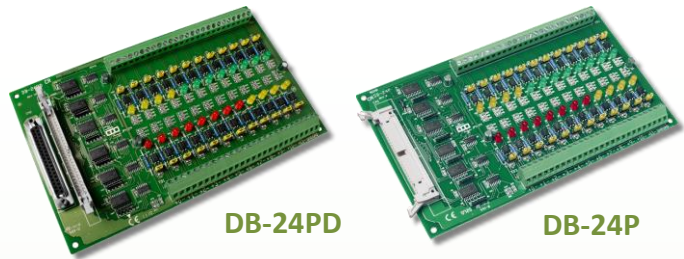


Table A4-1:

	DB-24P	DB-24PD
50-pin Flat-Cable Header	Yes	Yes
D-sub 37-pin Header	No	Yes
Other Specifications	Same	

A5. DB-24R and DB-24RD Relay Board

The DB-24R, 24-channel relay output board, consists of 24 form-C relays for efficiently controlling the switch with the use of an appropriately loaded program. The relays are energized by applying a 12 V/24 V voltage signal to the appropriate relay channel on the 50-pin flat-cable connector. There are 24 enunciator LEDs for each relay channel and the LED light will go on when their associated relay has been activated. The control scheme is illustrated below.

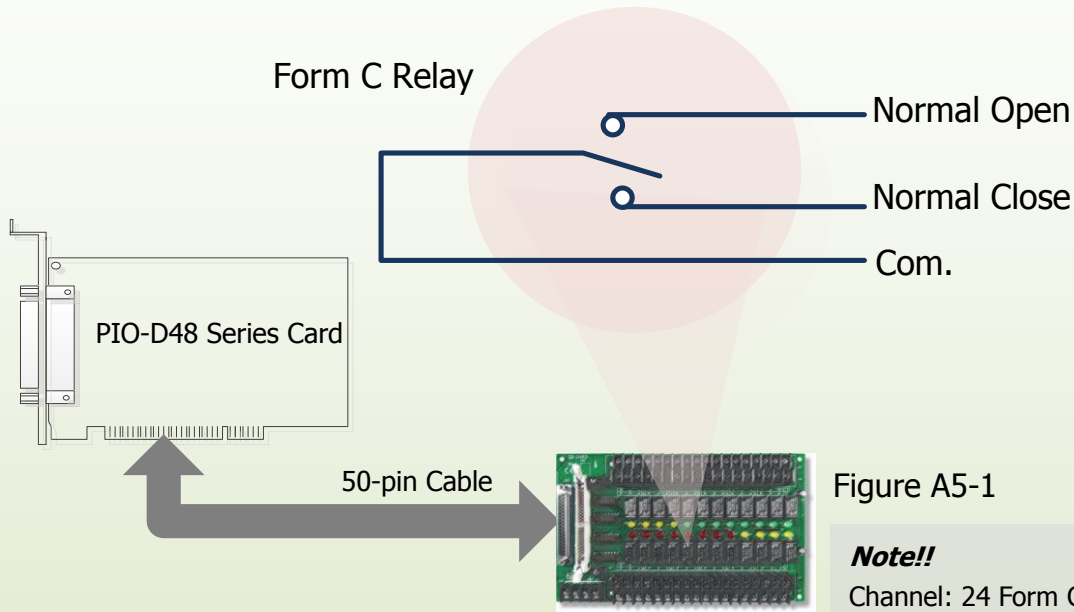
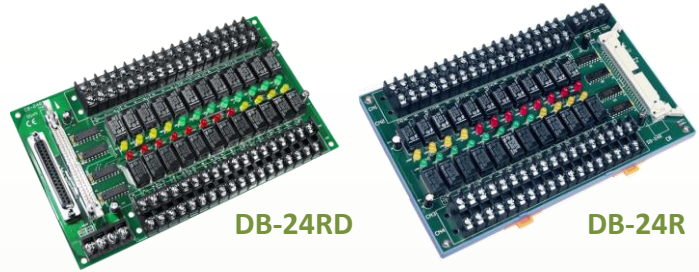


Figure A5-1

Note!!

Channel: 24 Form C Relay
Relay: Switching up to 0.5 A at 110 V_{AC} or 1 A at 24 V_{DC}

Table A5-1:

	DB-24R	DB24RD
50-pin Flat-Cable Header	Yes	Yes
D-sub 37-pin Header	No	Yes
Other Specifications	Same	

Table A5-2:

DB-24R, DB-24RD	24 * Relay (120 V, 0.5 A)
DB-24PR, DB-24PRD	24 * Power Relay (250 V, 5 A)
DB-24POR	24 * PhotoMOS Relay (350 V, 0.1 A)
DB-24SSR	24 * SSR (250 V _{AC} , 4 A)

A6. Daughter Boards Comparison Table

Table A6-1 is the comparison table for the daughter application of PIO/PISO series cards.

Table A6-1:

I/O Card	PIO-D48		PIO-D48	
	-	PIO-D48U	PIO-D48U	PIO-D48SU
		PEX-D48	PEX-D48	
Cable/ Daughter Boards	20-Pin Flat-Cable	50-Pin Flat-Cable	37-Pin D-sub	100-Pin SCSI II
DB-37	NO	NO	Yes	NO
DN-37	NO	NO	Yes	NO
ADP-37/PCI	NO	Yes	Yes	NO
ADP-50/PCI	NO	Yes	NO	NO
DB-24P	NO	Yes	NO	NO
DB-24PD	NO	Yes	Yes	NO
DB-16P8R	NO	Yes	Yes	NO
DB-24R	NO	Yes	NO	NO
DB-24RD	NO	Yes	Yes	NO
DB-24C	Yes	Yes	Yes	NO
DB-24PR	Yes	Yes	NO	NO
DB-24PRD	NO	Yes	Yes	NO
DB-24POR	Yes	Yes	Yes	NO
DB-24SSR	NO	Yes	Yes	NO
DN-100	NO	NO	NO	Yes