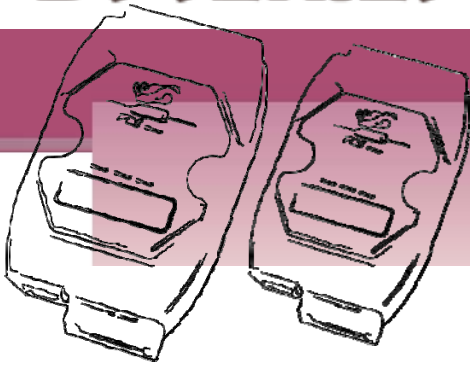


# PDS SERIES QUICK START GUIDE



*For PDS-700 Series*

English/ August 2011/ Version 1.2

## 1 What's in the shipping package?

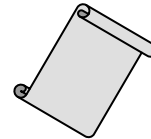
The package includes the following items:



**PDS-700 Series**



**Software CD**



**Quick Start Guide**  
(This Document)



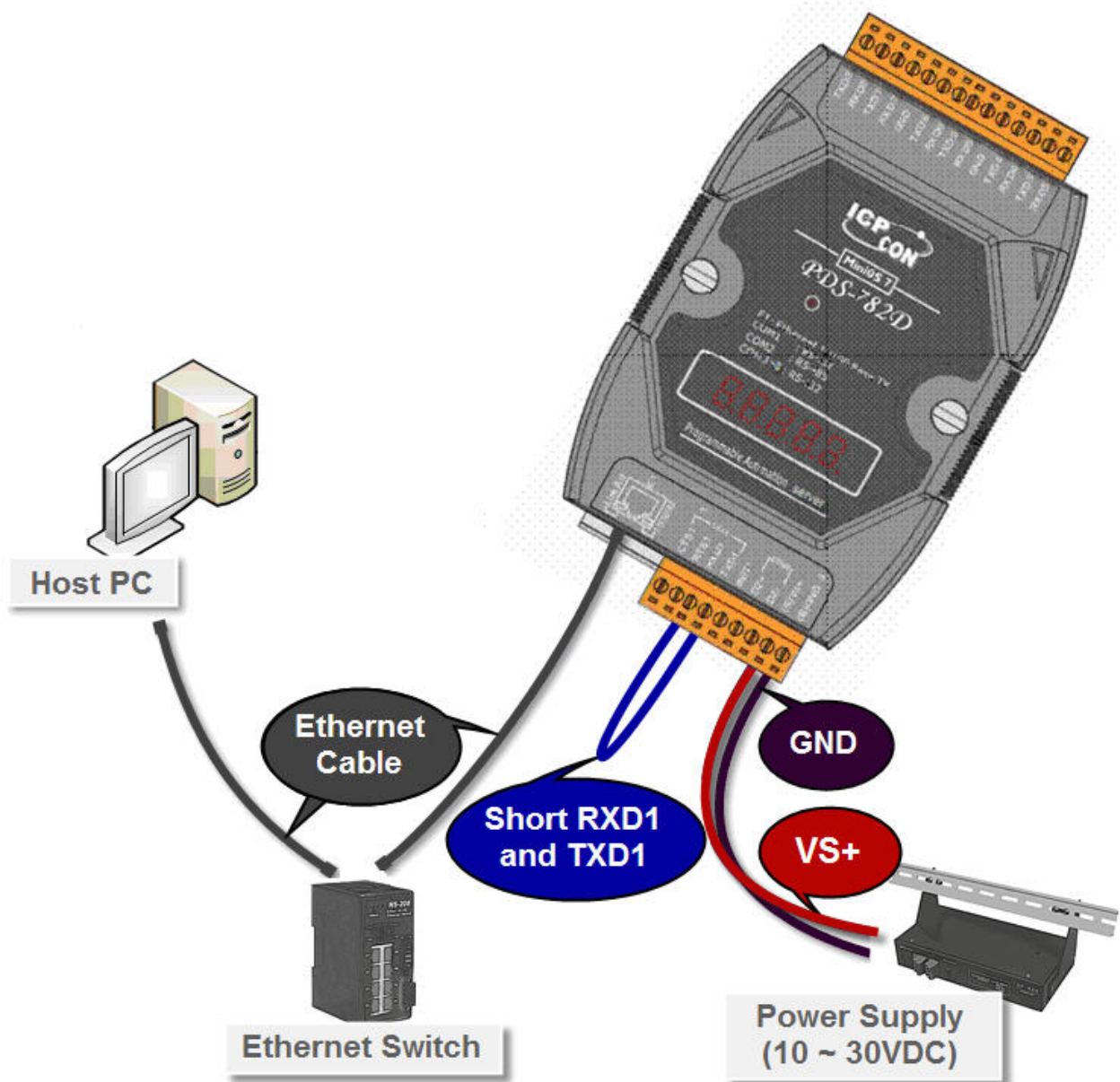
**CA-0910 Cable**

## 2 Preparations for devices

1. Power Supply: **+10 ~ +30 V<sub>DC</sub>**. (Ex: DP-665)
2. Ethernet Hub. (Ex: NS-205)
3. Make sure your PC has workable network settings.
4. Disable or well configure your Windows firewall and Anti-Virus firewall first, else the "Search Servers" on page 3 may not work. (Please contact with your system Administrator)

# 3 Connecting the Power and Host PC

1. Wire "RxD1" and "TxD1" of the PDS-700 for self-test.
2. Connect both the PDS-700 and your computer to the same sub network or the same Ethernet Switch, and power the PDS-700 on.



# 4 Installing software on your PC

## Install VxComm Utility:

The software is located at:  
CD: \NAPDOS\Driver\VxComm\_Driver

[http://ftp.icpdas.com/pub/cd/8000cd/napdos/driver/vxcomm\\_driver/](http://ftp.icpdas.com/pub/cd/8000cd/napdos/driver/vxcomm_driver/)

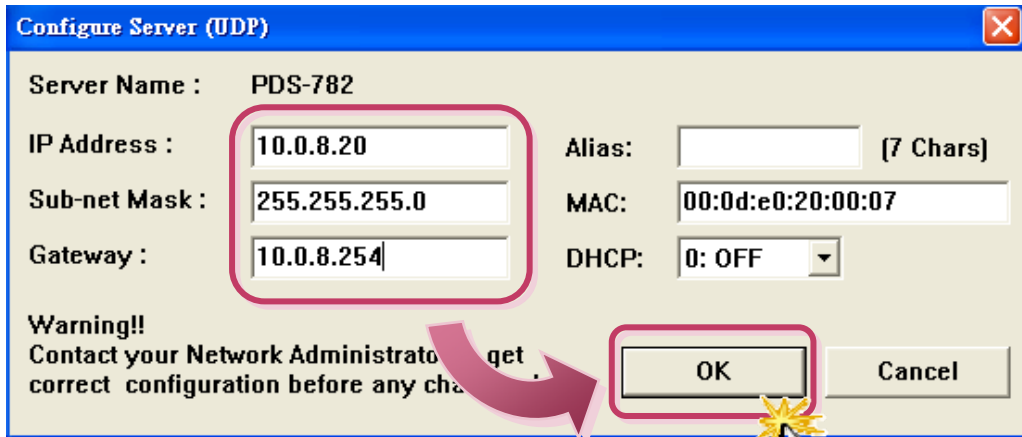


# 5 Configuring Ethernet Settings

1. Double click the VxComm Utility shortcut on the desktop.
2. Click "**Search Servers**" button to search your PDS-700.
3. Double-Click the PDS-700 to configure the Ethernet Settings.

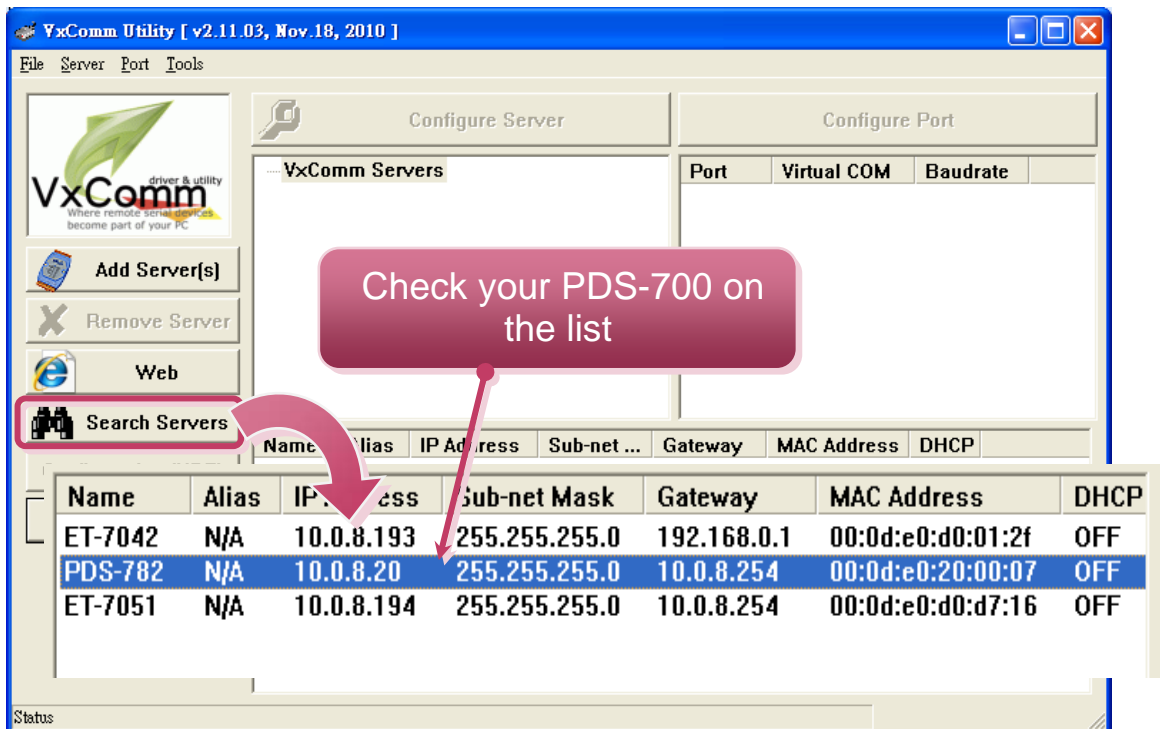
Name	Alias	IP Address	Sub-net Mask	Gateway	MAC Address	DHCP
ET-7042	N/A	10.0.8.193	255.255.255.0	10.0.8.254	00:0d:e0:d0:25:2f	OF
PDS-782	N/A	192.168.255.1	255.255.255.0	192.168.0.1	00:0d:e0:20:00:07	01
ET-7051	N/A	10.0.8.194	255.255.255.0	10.0.8.254	00:0d:e0:d0:d7:16	OF

4. Contact your Network Administrator to get correct network configuration. Modify the network settings and then click "OK". The PDS-700 will restart it-self immediately.

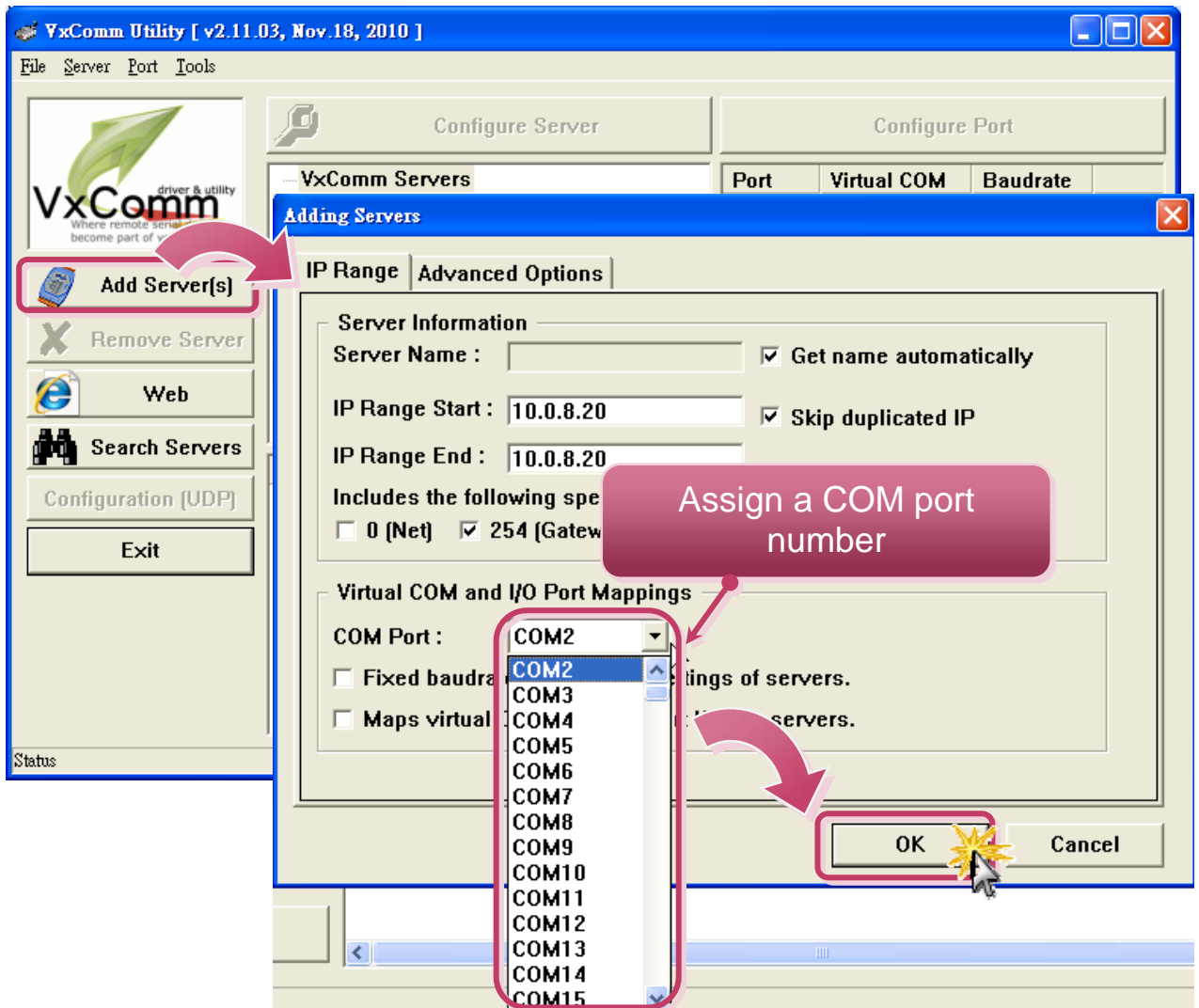


## 6 Configuring Virtual COM Ports

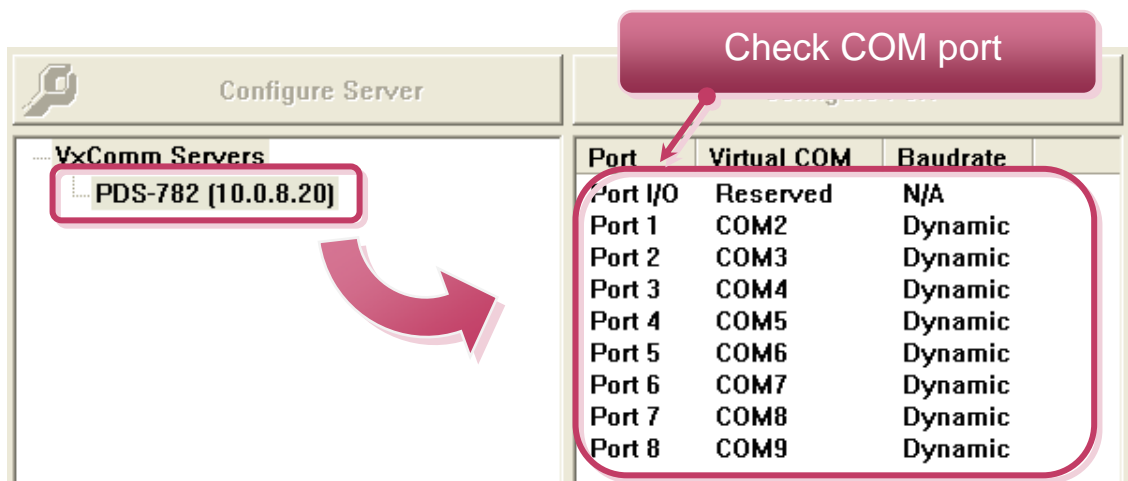
1. Wait 2 seconds and then click the "Search Servers" button again to ensure the PDS-700 is working well with new configuration.



2. Click the **"Add Server[s]"** button. Assign a COM Port number and click **"OK"** to save your settings.



3. Click on PDS-700 name and check the virtual COM port mappings on the PC.

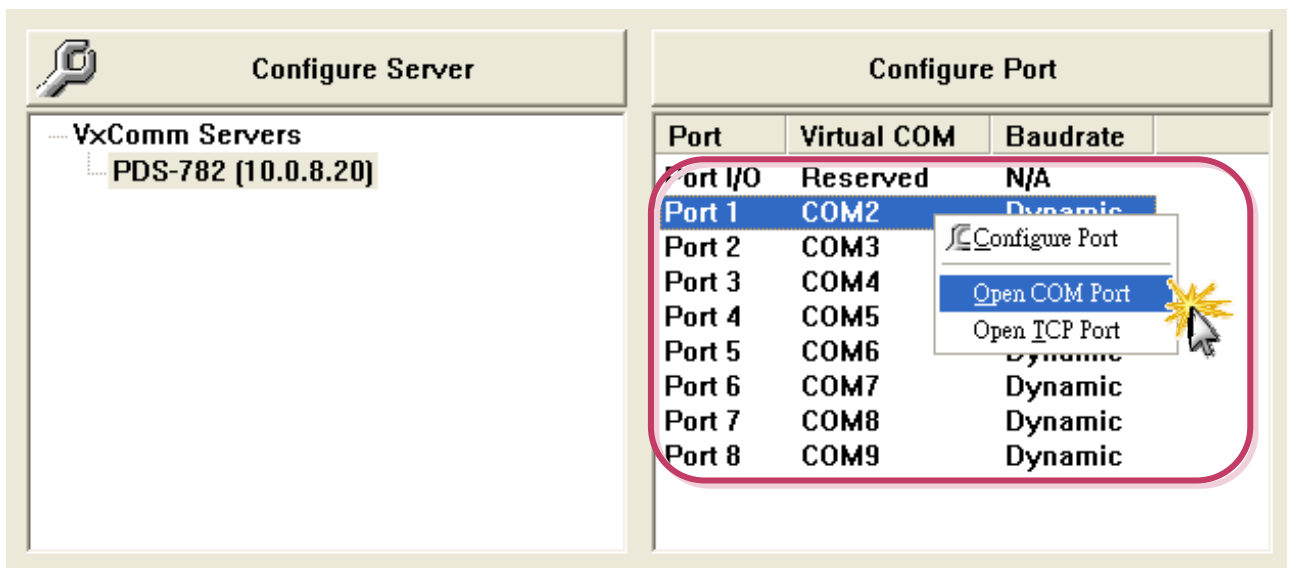


4. Click "**Tools**" >> "**Restart Driver**", and then click the "**Restart Driver**" button.



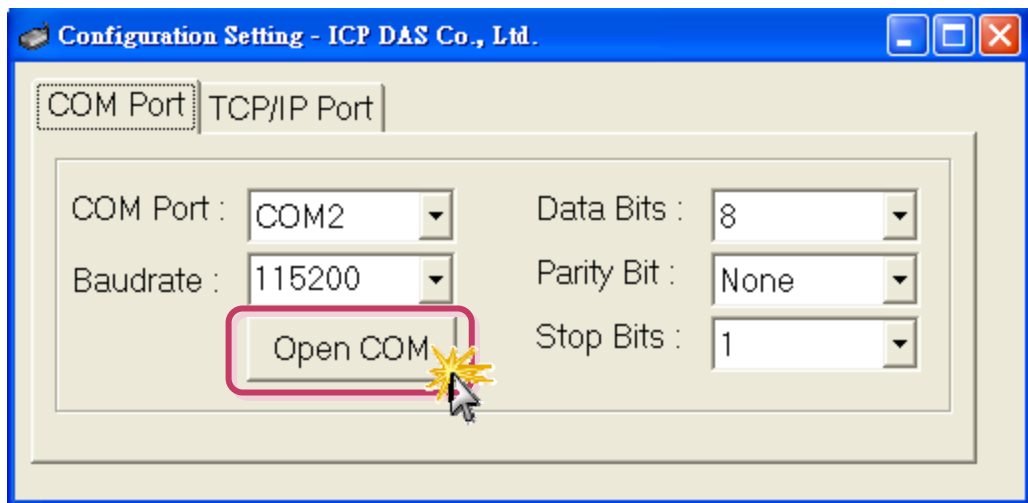
# 7 Testing your PDS-700

1. Right click Port 1 and then choose the "**Open COM Port**" item.

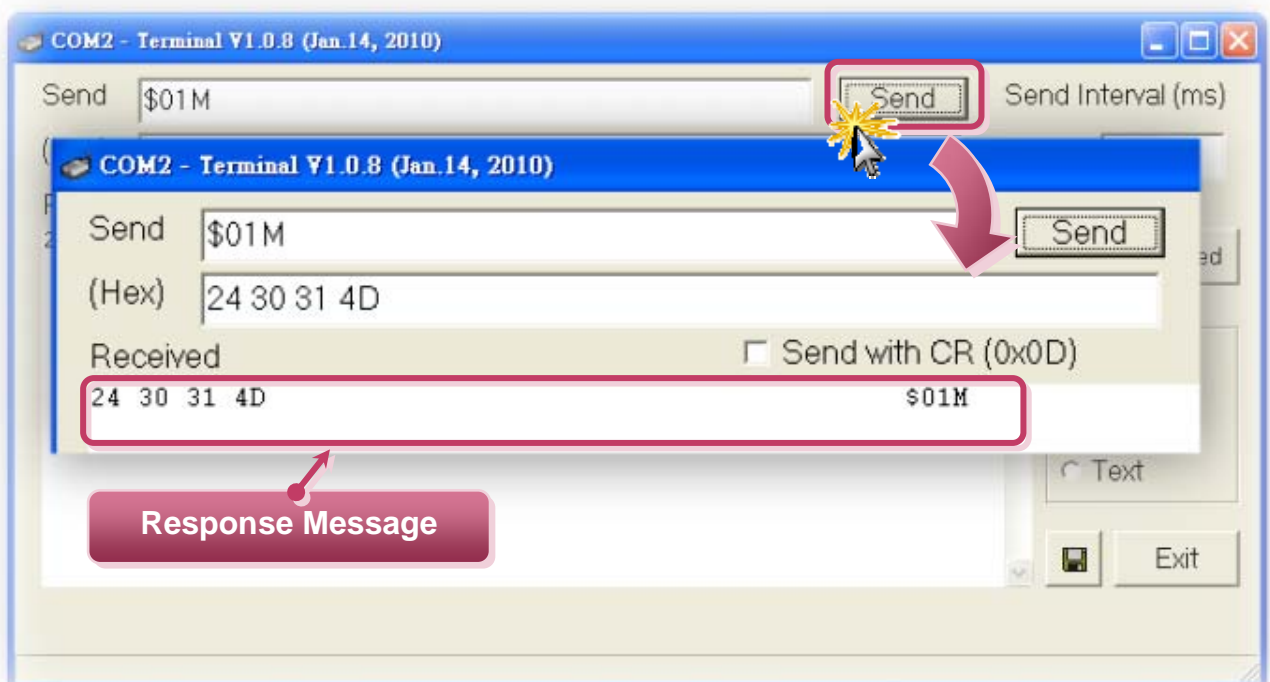




2. Check that the configuration of the COM Port is correct and then click the **“Open COM”** button.



3. Type a string in the send field then click the **“Send”** button. If a response is received, it will be displayed in the received field.



4. If the test is successful, then your COM port program should now be able to work with this Virtual COM Port.



## Related Information

- **PDS-700 Series Product Page:**  
[http://www.icpdas.com/products/Industrial/pds/PDS-700\\_Series.htm](http://www.icpdas.com/products/Industrial/pds/PDS-700_Series.htm)
- **PDS-700 Documentations:**  
CD:\Napdos\PDS\PDS-700\document\  
<http://ftp.icpdas.com/pub/cd/8000cd/napdos/pds/pds-700/document/>
- **PDS-700 firmware:**  
CD:\Napdos\PDS\PDS-700\Demo\Firmware\  
<http://ftp.icpdas.com/pub/cd/8000cd/napdos/pds/pds-700/demo/firmware/>
- **NS-205 and DP-665 Product Page (optional):**  
<http://www.icpdas.com/products/Switch/industrial/ns-205.htm>  
[http://www.icpdas.com/products/Accessories/power\\_supply/dp-665.htm](http://www.icpdas.com/products/Accessories/power_supply/dp-665.htm)

### Note!!

The flash protection function is disabled for factory default settings. User can modify the program or update the firmware. If you want to enable flash protection function, refer to user manual section 3.9 Flash Protection Function.

CD:\NAPDOS\PDS\PDS-700\Document\  
<http://ftp.icpdas.com/pub/cd/8000cd/napdos/pds/pds-700/document/>