

# Quick Start for ET-7200/PET-7200

July 2014, Version 1.0.1

## Congratulations!

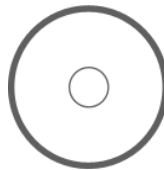
This Quick Start will provide information needed to get started with ET-7200/PET-7200. Please also consult the User Manual for detailed information on the setup and use of ET-7200/PET-7200.

## What's In the Box?

In addition to this guide, the package includes the following items:



**ET-7200/PET-7200 Module**



**Software Utility CD**



**Quick Start**

## Technical Support

- **ET-7200/PET-7200 User Manual**

CD:\NAPDOS\ET7000\_ET7200\Document\

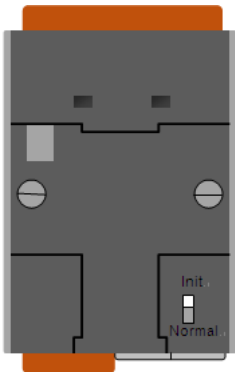
[http://ftp.icpdas.com/pub/cd/6000cd/napdos/et7000\\_et7200/document/](http://ftp.icpdas.com/pub/cd/6000cd/napdos/et7000_et7200/document/)

- **ET-7200/PET-7200 Website**

[http://www.icpdas.com/products/Remote\\_IO/et-7000/et-7000\\_introduction.htm](http://www.icpdas.com/products/Remote_IO/et-7000/et-7000_introduction.htm)

- **ICP DAS Website**

<http://www.icpdas.com/>



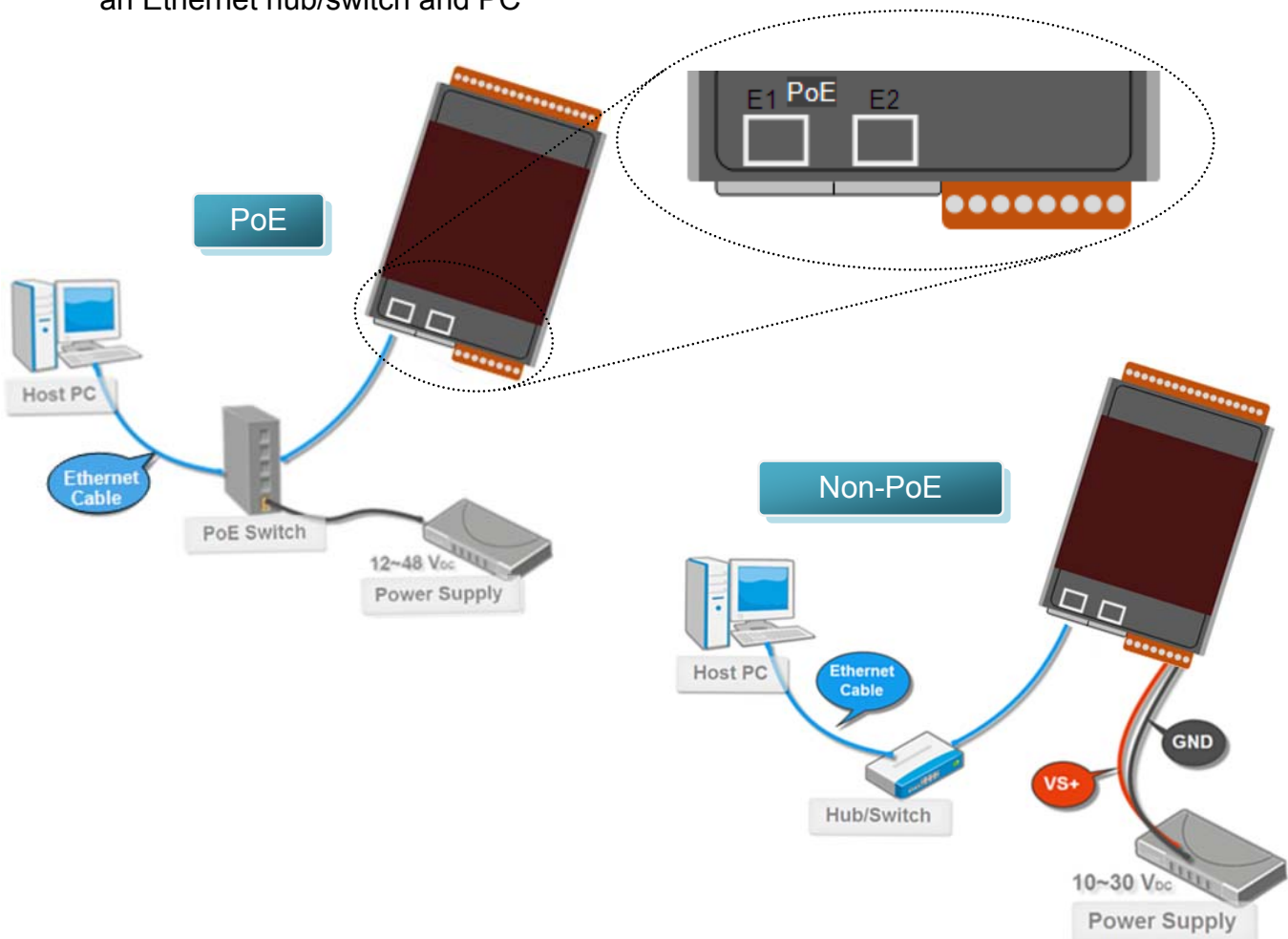
# 1 Configuring Boot Mode

**Init Mode:** After booting, ET-7200/PET-7200 will not run the default firmware and cannot surf the internet. Use this mode to update MiniOS7 image.

**Normal Mode:** After booting, ET-7200/PET-7200 will run the default firmware and can use all ET-7200 functions.

# 2 Connecting to Network, PC and Power

The ET-7200/PET-7200 is equipped with an RJ-45 Ethernet port for connection to an Ethernet hub/switch and PC



# 3 Installing the MiniOS7 Utility

## Step 1 : Get the MiniOS7 Utility tool

The MiniOS7 Utility can be obtained from companion CD or our FTP site:

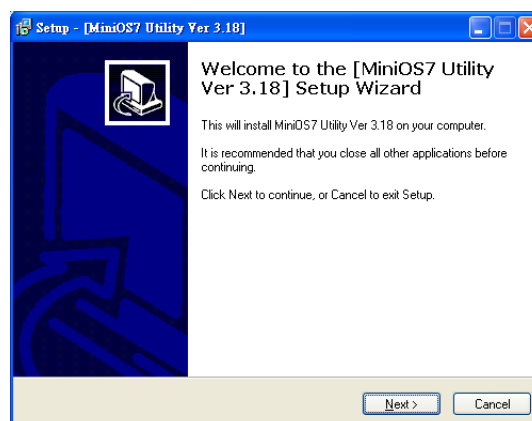
CD:\Napdos\minios7\utility\minios7\_utility\

[http://ftp.icpdas.com/pub/cd/6000cd/napdos/software/minios7\\_utility/](http://ftp.icpdas.com/pub/cd/6000cd/napdos/software/minios7_utility/)

## Step 2 : Follow the prompts to complete the installation



After the installation has been completed, there will be a new shortcut for MiniOS7 Utility on the desktop.



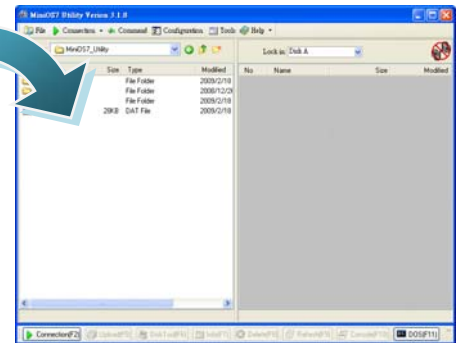
# 4 Using MiniOS7 Utility to Assign a New IP

The ET-7200/PET-7200 are Ethernet devices, which comes with a default IP address, therefore, you must first assign a new IP address to the ET-7200/PET-7200

| Item        | Default       |
|-------------|---------------|
| IP Address  | 192.168.255.1 |
| Subnet Mask | 255.255.0.0   |
| Gateway     | 192.168.0.1   |

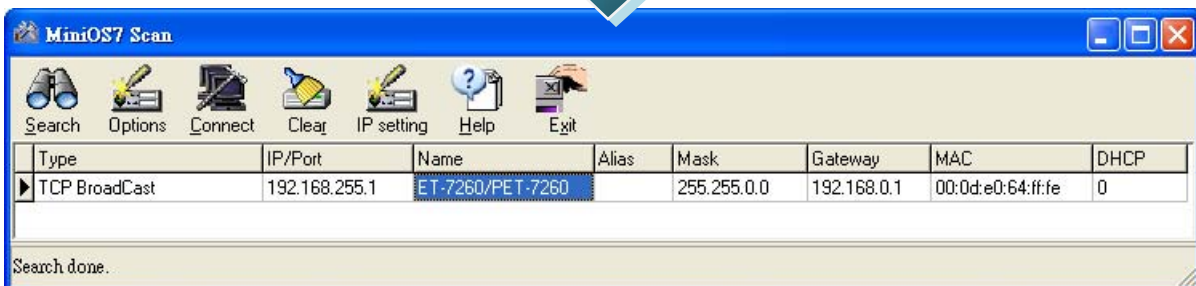
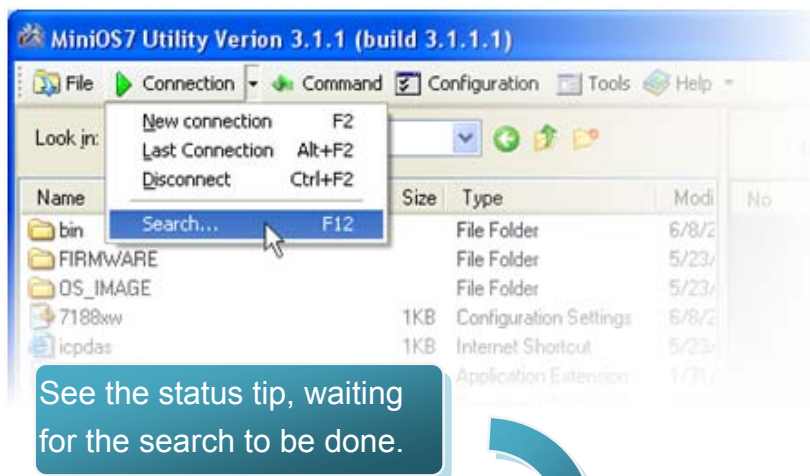
## Step 1 : Run the MiniOS7 Utility

Double-click the MiniOS7 Utility shortcut on your desktop.

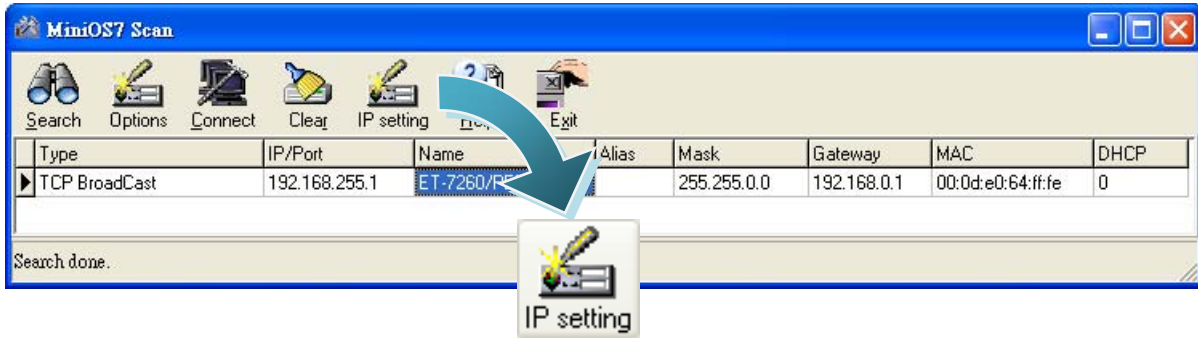


## Step 2 : Press "F12" or choose "Search" from the "Connection" menu

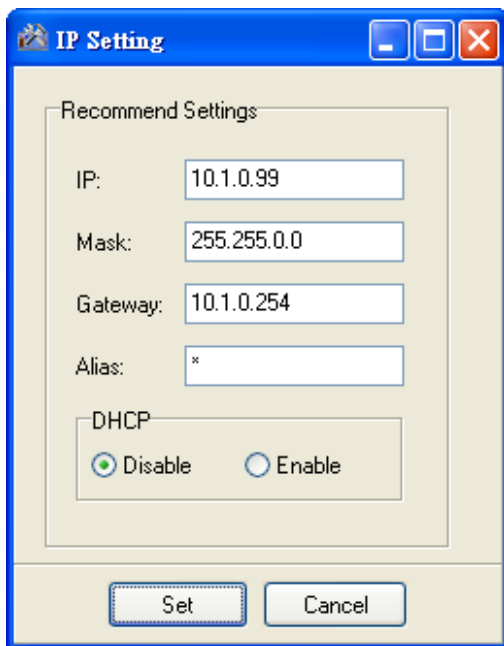
After pressing F12 or choosing Search from Connection menu, the MiniOS7 Scan dialog will appear, that will display a list of all MiniOS7 modules on your network.



**Step 3 : Choose the module name and then choose “IP setting” from the toolbar**

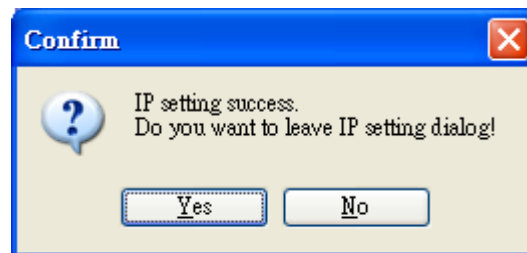


**Step 4 : Assign a new IP address and then choose “Set” button**



**Step 5 : Choose “Yes” button**

Press the Yes button in the Confirm dialog box to exit the procedure.



## 5 Enabling Adobe Flash Player in Your Browser

Your browser must support Adobe Flash Player and have it enabled in order to use the ET-7200/PET-7200 web site.

If you do not have it installed, please go to the following website and install it.



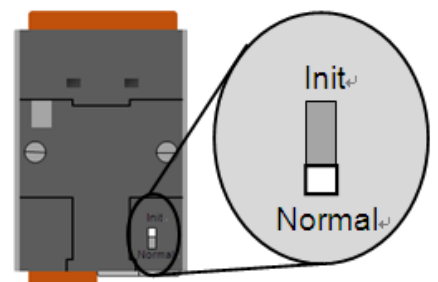
The Adobe Flash Player Download Center :  
<http://get.adobe.com/flashplayer/>

## 6 Go to the ET-7200/PET-7200 Web Site to Check out Functions

The ET-7200/PET-7200 contains an advanced web configuration system that provides users with access ET-7200/PET-7200 applications through a standard web browser.

### Step 1 : Start ET-7200/PET-7200

Make sure the switch placed in the "Normal" position.  
Then reboot ET-7200/PET-7200.



### Step 2 : Open a browser

Please use a standard internet browser to view the ET-7200/PET-7200 webpage, such as Mozilla Firefox or Internet Explorer...etc.

### Step 3 : Type the URL address of ET-7200/PET-7200

If you haven't changed the default IP address of the ET-7200/PET-7200, please refer to "4. Using MiniOS7 Utility to Assign a New IP" to configure it.

### Step 4 : Fill out the User name and Password

After entering the IP address, the login dialog box will appear and prompt you to enter your User name and Password.

The factory default User name and Password are as follows:

| Item      | Default |
|-----------|---------|
| User name | Admin   |
| Password  | Admin   |



### Step 5 : Welcome to ET-7200/PET-7200 web site

After logging into the ET-7000/PET-7200 web site, the welcome page will appear.



## Step 6 : Check out the data acquisition services



Under the Main Menu, expand the Web HMI, and then select the Web HMI option to check the values of the data acquisition.

| Channel | Register | Status | Counter | Clear | High Latched | Low Latched |
|---------|----------|--------|---------|-------|--------------|-------------|
| DI0     | 10000    | OFF    | 0       | Clear | NO           | YES         |
| DI1     | 10001    | OFF    | 0       | Clear | NO           | YES         |
| DI2     | 10002    | OFF    | 0       | Clear | NO           | YES         |
| DI3     | 10003    | OFF    | 0       | Clear | NO           | YES         |
| DI4     | 10004    | OFF    | 0       | Clear | NO           | YES         |
| DI5     | 10005    | OFF    | 0       | Clear | NO           | YES         |

\*\* means that the function is presently disabled.

| Channel | Register | Status | Action |
|---------|----------|--------|--------|
| DO0     | 00000    | OFF    | On Off |
| DO1     | 00001    | OFF    | On Off |
| DO2     | 00002    | OFF    | On Off |
| DO3     | 00003    | OFF    | On Off |
| DO4     | 00004    | OFF    | On Off |
| DO5     | 00005    | OFF    | On Off |

Communication Status: Good

## 7 Reset to Factory Default Settings

Press the reset button for 5 seconds in order to reset the ET-7200/PET-7200 to factory default settings.

| Item           | Default       |
|----------------|---------------|
| IP Address     | 192.168.255.1 |
| Subnet Mask    | 255.255.0.0   |
| Gateway        | 192.168.0.1   |
| Login Username | Admin         |
| Login Password | Admin         |

