

Quick Start Guide for PMC-5141

August 2012, Version 2.3.1

Welcome!

Thank you for purchasing PMC-5141 – the Power Meter Concentrator for Power monitoring and management system. This Quick Start Guide will provide you with minimum information to get started with PMC-5141. It is intended for use only as a quick reference. For more detailed information and procedures, please refer to the full user manual on the CD included in this package.

What's In the Box?

In addition to this guide, the package includes the following items:



Power Meter Concentrator
(PMC-5141)



2 GB microSD card



Software Utility CD



Screw Driver
(1C016)

Technical Support

- **PMC-5141 User Manual**

CD:\PMC-5141\Document

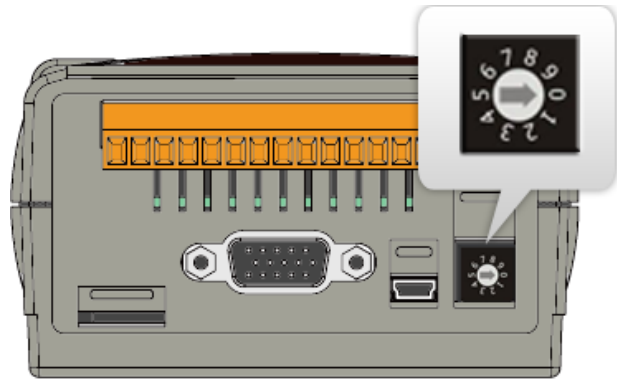
http://ftp.icpdas.com/pub/cd/pmc-5141_CD/pmc-5141/document/

- **PMC-5141 Website**

http://www.icpdas.com.tw/product/solutions/intelligence_power_meter/pmms/pmc-5141.html

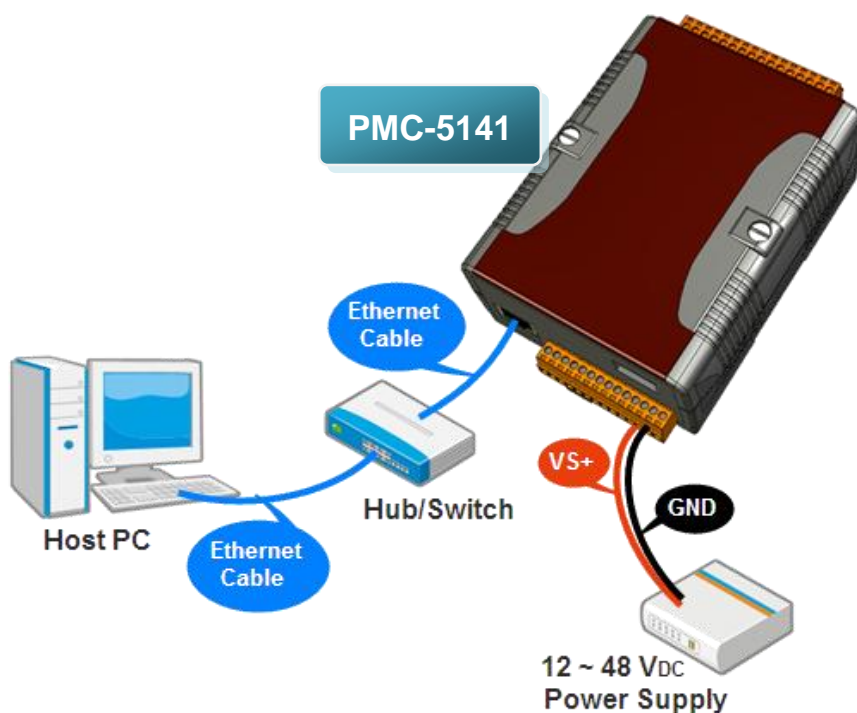
1 Configuring the boot mode

Before starting PMC-5141 at the first time, be sure that the switch is placed in the "0" position.



2 Connect to PC, Network and Power

The PMC-5141 is equipped with an RJ-45 Ethernet port for connection to an Ethernet hub/switch and PC. You can also link directly the PMC-5141 to PC with an Ethernet cable.



3

Using Browser to Assign a New IP

The PMC-5141 is an Ethernet controller, which comes with a default IP setting; therefore, you must first assign a new IP setting to the LAN1 port of PMC-5141.

The factory default IP settings of PMC-5141 are as follows:

Item	Default
IP Address	192.168.255.1
Subnet Mask	255.255.0.0
Gateway	192.168.0.1

Follow the following steps for PMC-5141 new IP setting :

Step1 : Change the PC's IP setting as following ◦

- IP : 192.168.255.2
- Subnet mask : 255.255.0.0
- Gateway address : 192.168.0.1

Step2 : Make sure the PC and PMC-5141(LAN1) is connecting through Ethernet.

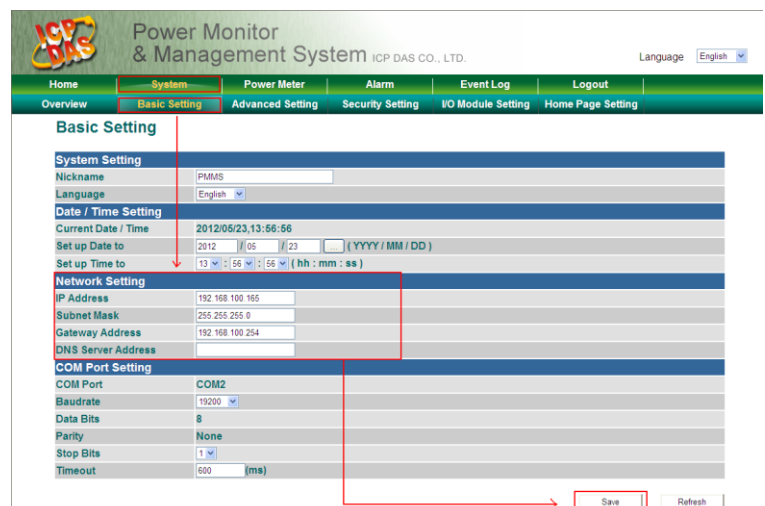
Step3 : Open a PC side browser, and type in the URL address (<http://192.168.255.1>) of the PMC-5141 to connect the Web Server in PMC-5141



Step4 : Use default Administrator password “Admin” to login the system.

Step5 : Please follow the sequence **【System】** → **【Basic Setting】** → **【Network Setting】** to change the IP setting of PMC-5141.

Step6 : After complete the IP setting, please save it, and then the new IP setting will take effect.



4

Go to PMC-5141 Web Site for Power Management

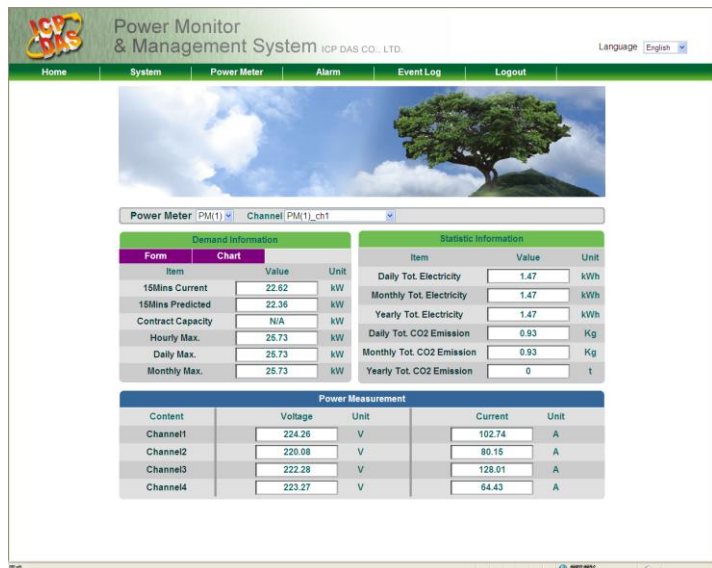
Please follow the steps below to build a power monitor and management applications with ICP DAS PMC-5141 & Power Meter.

Step 1: Open a browser, and type in the URL address of the PMC-5141

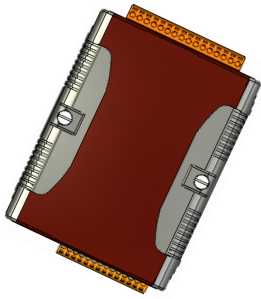
Open a browser and type in the URL address (The new IP setting) of the PMC-5141 controller in the address bar. Make sure the IP address is accurate.

Step 2: Get on the PMC-5141 web site

Get on the PMC-5141 web site. Complete the PMC-5141 setting in the order (Login → System Setting → Power Meter Setting → Alarm Setting) for a power monitor and management application.



Step 3: For more detail information, please refer to PMC-5141 User Manual



PMC-5141 快速安裝指南

August 2012, Version 2.3.1

歡迎使用 PMC-5141 快速安裝指南

感謝您購買 PMC-5141 電表集中器(Power Meter Concentrator)。本『快速安裝指南』提供 PMC-5141 安裝入門所需資訊，如需更詳細的安裝及使用說明，請參閱 PMC-5141 使用手冊。

產品內容

除了本『快速安裝指南』外，此產品內容還包括以下配件：



電表集中器
(PMC-5141)



2 GB micro SD 卡



軟體工具光碟



螺絲起子
(1C016)

技術支援

- **PMC-5141 使用手冊**

CD: \PMC-5141\Document

http://ftp.icpdas.com/pub/cd/pmc-5141_CD/pmc-5141/document/

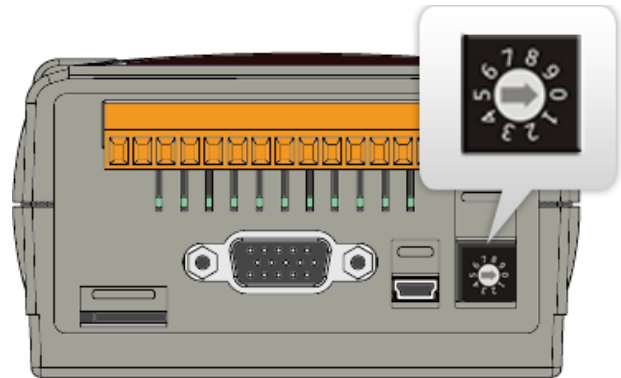
- **PMC-5141 產品網頁**

http://www.icpdas.com.tw/product/solutions/intelligence_power_meter/pmms/pmc-5141_tc.html

1

檢視啟動模式

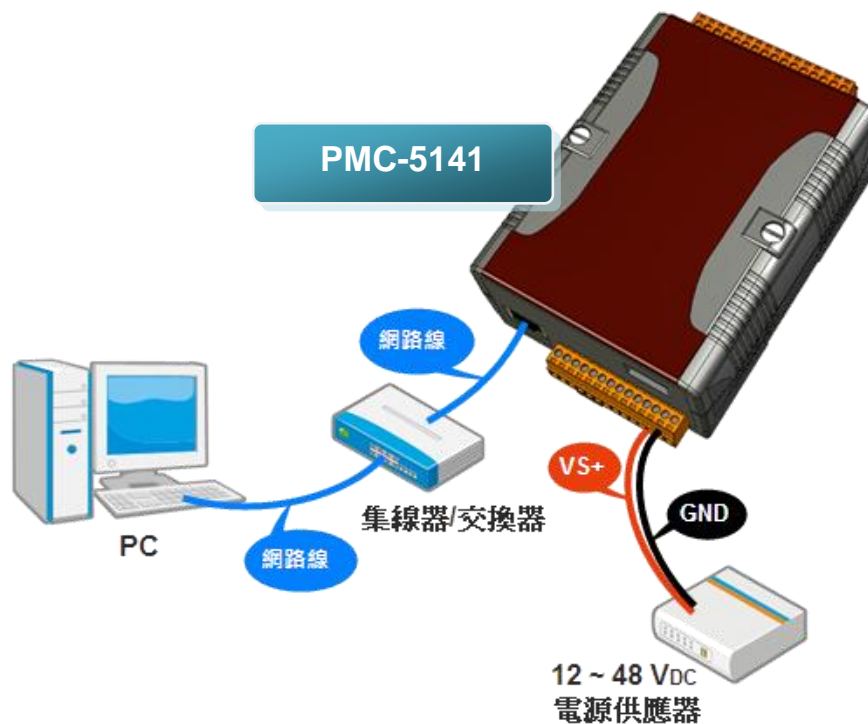
在第一次啟動 PMC-5141 前，請先確認旋轉式按鈕的位置在 "0"



2

連接 PC 主機、網路及電源

PMC-5141 配有標準的網路接口 RJ-45，可透過網路集線器/交換器與 PC 連接，也可直接連到 PC 的網路接口。



3

啟動瀏覽器設定 PMC-5141 的 IP 位址

PMC-5141 控制器在出廠時會統一預設網路設定值，使用者可以依照下列步驟自行變更網路設定。PMC-5141 的 LAN1 網路出廠預設值：

項目	預設值
IP 位址	192.168.255.1
子網路遮罩 (subnet mask)	255.255.0.0
通訊閘 (gateway)	192.168.0.1

設定步驟

步驟 1：將 PC 的網路設定更改為與 PMC-5141 相同網路區段。例如：

- IP：192.168.255.2
- Subnet mask：255.255.0.0
- Gateway address：192.168.0.1

步驟 2：確認 PMC-5141 的 LAN1 與 PC 已透過網路正確連接。

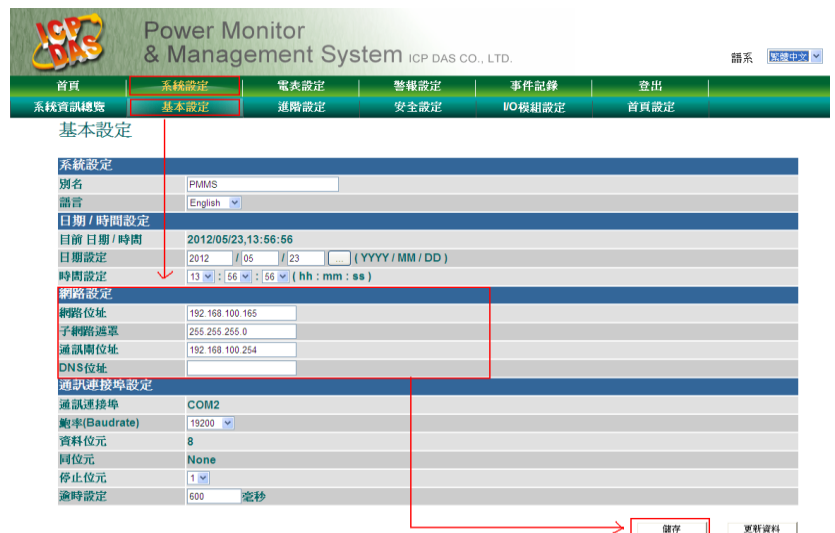
步驟 3：開啟 PC 端的瀏覽器並於網址列輸入 <http://192.168.255.1>。

步驟 4：輸入管理者預設密碼
Admin 進行登入。



步驟 5：登入成功後至【系統設定】→【基本設定】→【網路設定】，根據實際網路環境更改網路設定。

步驟 6：儲存成功後，登出系統並將 PMC-5141 連接至實際網路環境。



4

前往 PMC-5141 網頁進行電力管理設定

使用者透過 PMC-5141 控制器所提供的網頁，只需使用滑鼠點選設定，即可完成對控制器及所連接電表的電力監控規劃，PMC-5141 網頁並提供電表電力資訊的即時瀏覽。

步驟一：開啟瀏覽器，填入 PMC-5141 控制器 IP 作為瀏覽器的 URL 位址

開啟電腦上的瀏覽器，輸入 PMC-5141 控制器的 IP 作為 URL 位址(如有重新設定 IP，請確認所輸入 IP 是否正確)。

步驟二：進入 PMC-5141 的設定頁面

進入 PMC-5141 控制器所提供的參數設定頁面後，僅需依照首頁上的設定流程(系統登入 → 系統設定 → 電表設定 → 警報設定)，即可完成對 PMC-5141 控制器的設定。



步驟三：設定流程中的細節，請參照 PMC-5141 操作手冊