

Quick Start

for PPDS-700-IP67 Series



English/ Dec. 2014/ Version 1.0

1

What's in the Shipping Package?

The package includes the following items:

1 PPDS-700-IP67 Series



2 Quick Start Guide (This Guide)



3 Software CD



4 IP67 Power Plug



2

Installing Software on Your PC

1 Install VxComm Utility, which can be obtained from either the companion CD-ROM or the web site:



VxCommW7_v2.12.11_setup
VxComm Driver W7 Setup
ICP DAS Co., Ltd.



CD: \NAPDOS\Driver\VxComm_Driver



http://ftp.icpdas.com/pub/cd/8000cd/napdos/driver/vxcomm_driver/

2 Install Modbus Utility, which can be obtained from either the companion CD-ROM or the web site:



Modbus_UTILITY181_setup_20140417
ICPDAS



CD: \NAPDOS\Modbus\modubs_utility



http://ftp.icpdas.com/pub/cd/8000cd/napdos/modbus/modbus_utility/

3

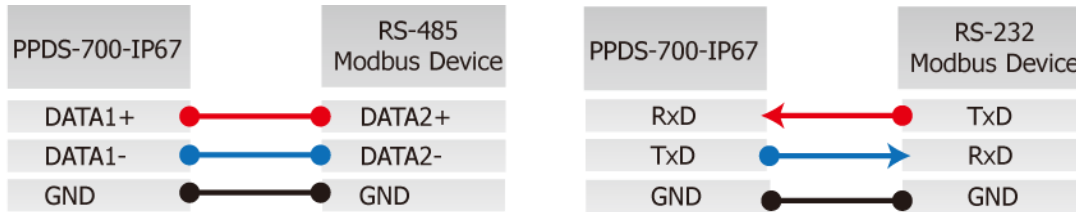
Connecting the Power and Host PC

❶ Make sure your PC has workable network settings.

Disable or well configure your Windows firewall and Anti-Virus firewall first, else the “Search Servers” on page 4 may not work. (Please contact with your system Administrator)

❷ Connect both the PPDS-700-IP67 and your PC to the same sub network or the same Ethernet Switch.

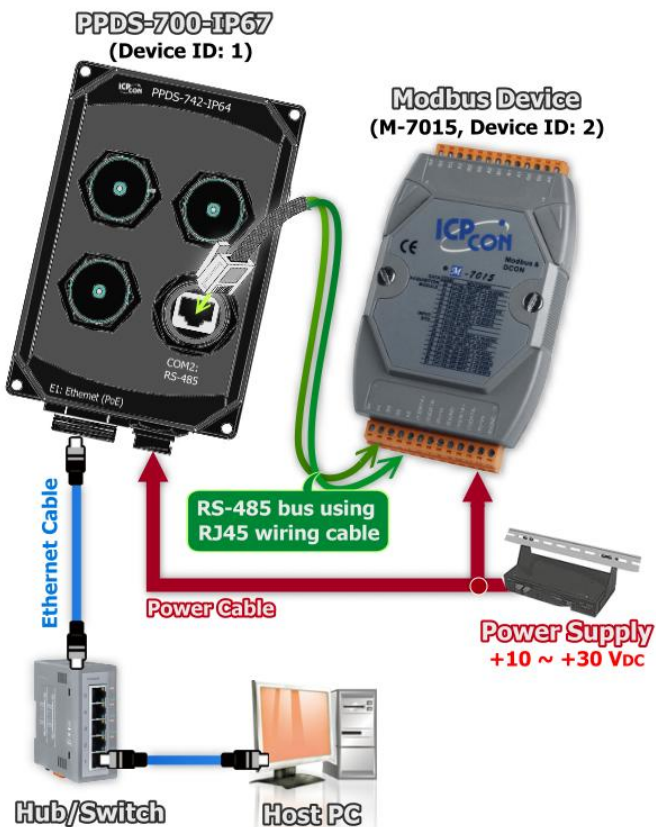
❸ Connect the Modbus device (e.g. M-7015, optional) to PPDS-700-IP67 on COM2 (RS-485 bus).



❹ Supply power to the PPDS-700-IP67 and Modbus device (e.g. M-7015, optional)

- PPDS-700-IP67: PoE or +12 ~ +48 V_{DC} power.
- M-7015 (optional): +10 ~+30 V_{DC} power; Device ID: 2.

Non-PoE Power Supply



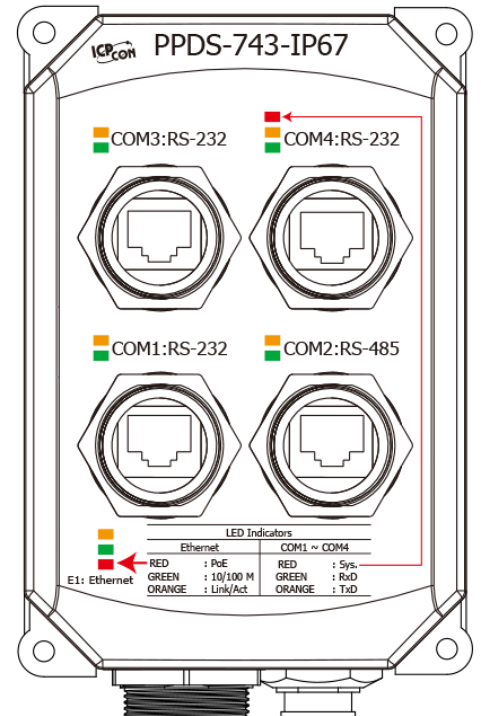
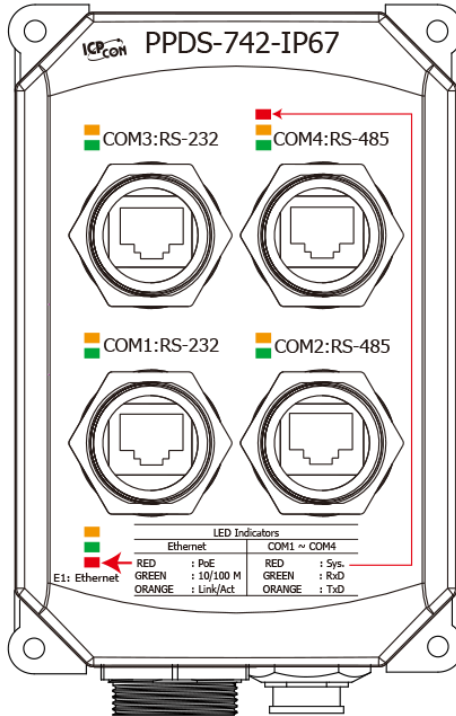
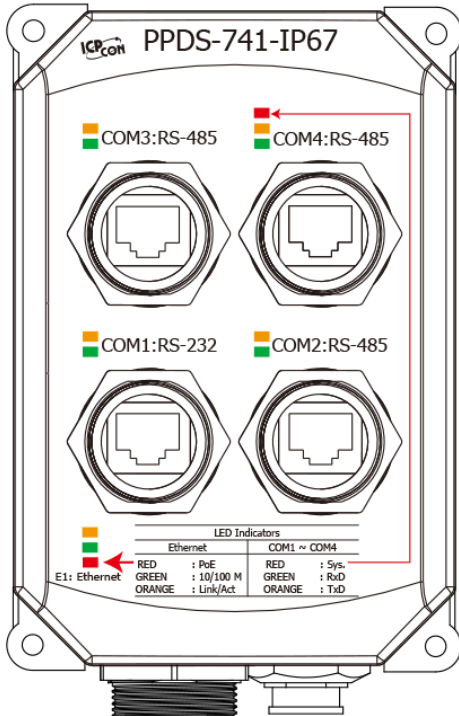
PoE Power Supply



Note: Please refer to the pin assignments of PPDS-700-IP67 to make RJ45 wiring cable and power cable.

4

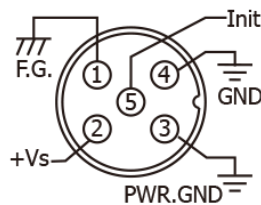
Pin Assignments



COM1 ~ COM4



DC +12 ~ +48 V_{DC}



LED Indicators

System	Red	Sys.
	Red	PoE (E1)
Ethernet	Green	10/100M (E1)
	Orange	Link/Act (E1)
COM1 ~ COM4	Green	RxD
	Orange	TxD

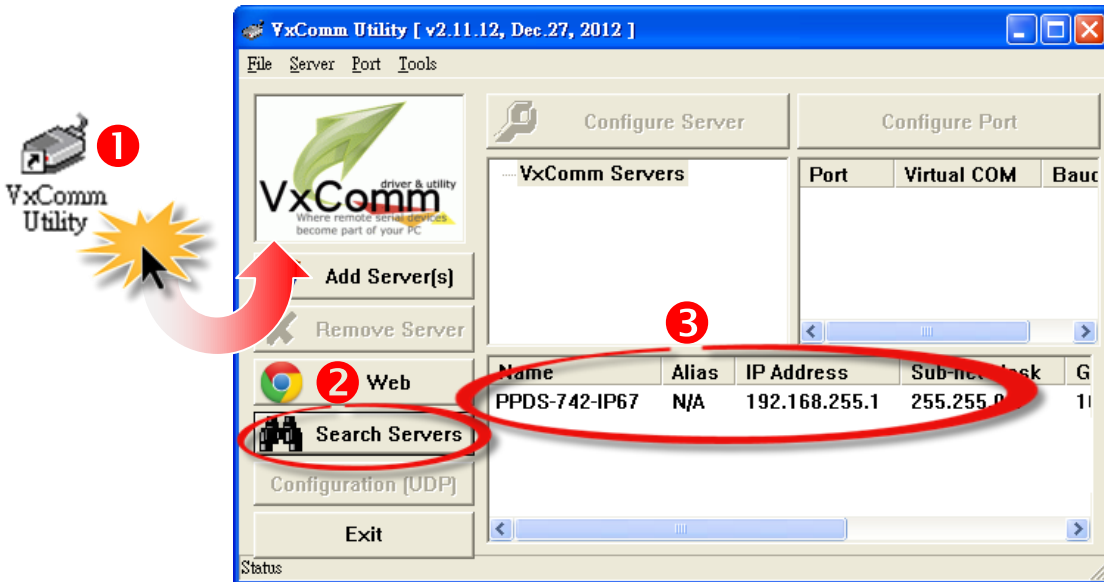
Pin	5-wire RS-232	2-wire RS-485
1	--	--
2	RTS	--
3	GND	GND
4	TxD	--
5	RxD	DATA+
6	--	DATA-
7	CTS	--
8	--	--

Pin	Name
1	F.G.
2	+Vs
3	PWR.GND
4	GND
5	Init

5

Configuring the Correct Network Settings

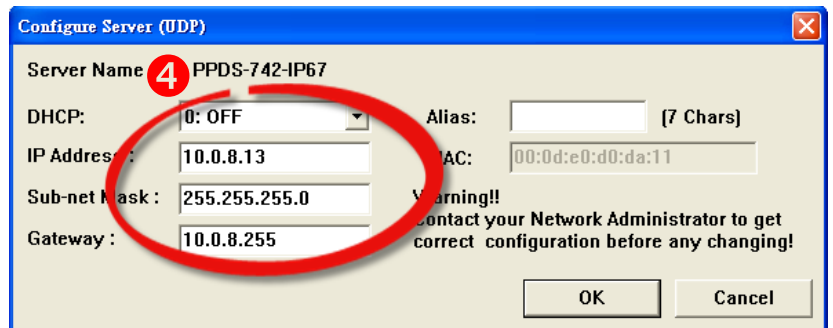
- 1 Double click the VxComm Utility shortcut on the desktop.
- 2 Click the “Search Servers” button to search your PPDS-700-IP67.
- 3 Double click the name of PPDS-700-IP67 to open the “Configure Server (UDP)” dialog box.



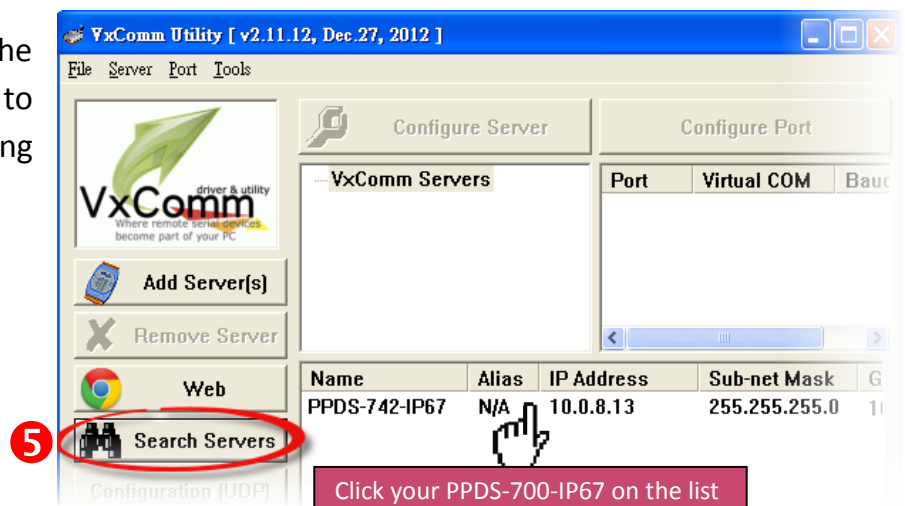
Factory Default Settings for PPDS-700-IP67:

IP	192.168.255.1
Gateway	292.168.0.1
Mask	255.255.0.0

- 4 Contact your Network Administrator to obtain a correct network configuration (such as **IP/Mask/Gateway**). Enter the network settings and then click “OK”. The PPDS-700-IP67 will use the new setting 2 seconds later.



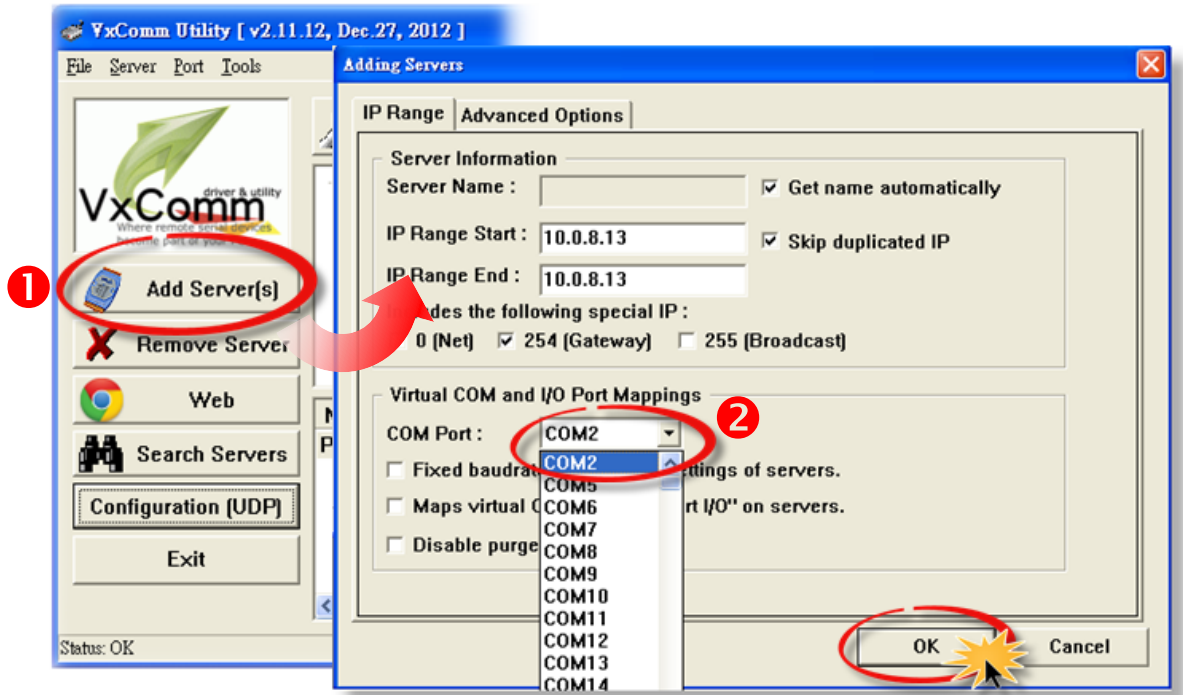
- 5 Wait 2 seconds and then click the “Search Servers” button again to ensure the PPDS-700-IP67 is working well with new configuration.



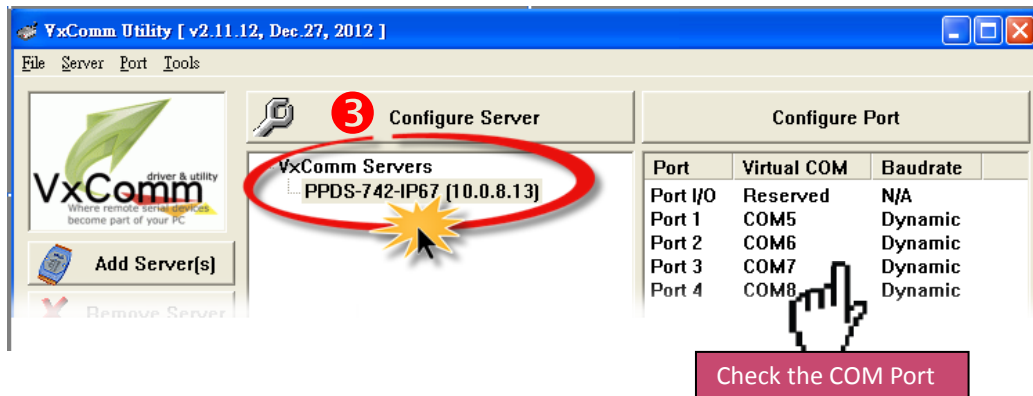
6

Configuring Virtual COM Ports

- 1 Click the "Add Server[s]" button.
- 2 Assign a COM Port number and click "OK" to save your settings.



- 3 Click on PPDS-700-IP67 name and check the virtual COM port mappings on the PC.



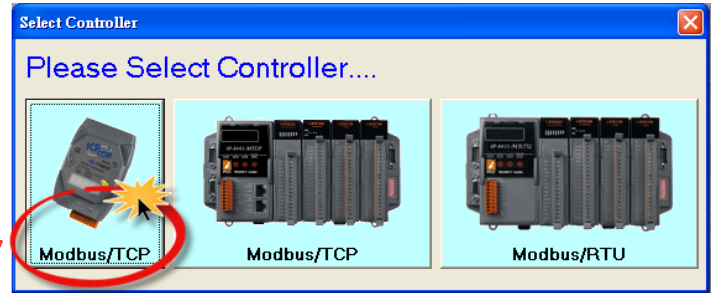
- 4 Click "Tools" → "Restart Driver", and then click the "Restart Driver" button.



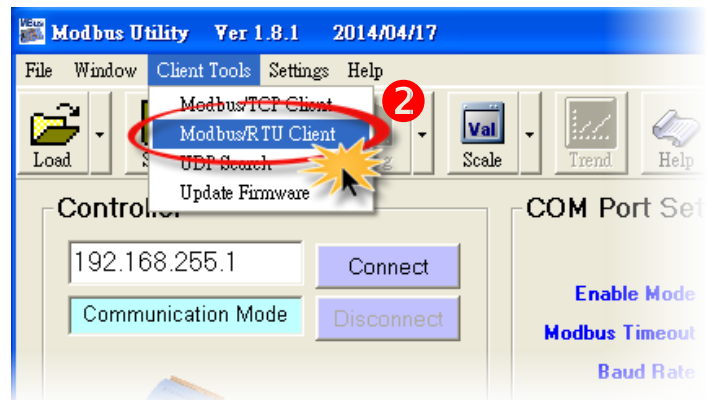
7

Test Modbus Device via Virtual COM Ports

❶ Double click the Modbus Utility shortcut on the desktop, and then click the “**Modbus/TCP**” button.

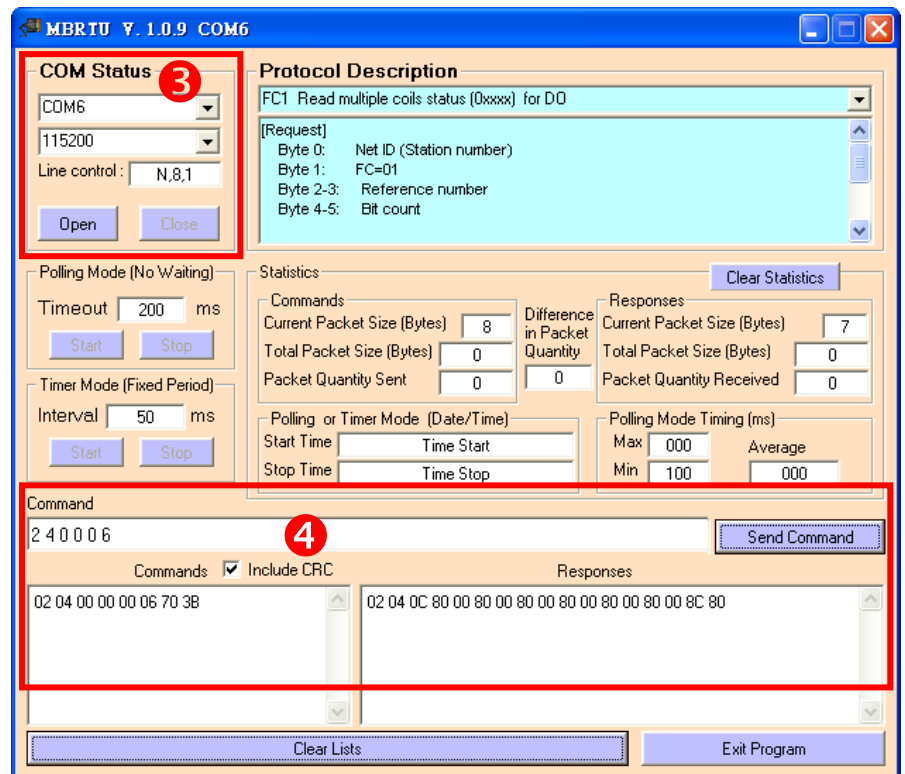


❷ Click on “**Client tools**” → “**Modbus/RTU Client**”.



❸ Select your virtual COM port and baud rate (Ex: **COM6/115200**) on PPDS-700-IP67, and then click the “**Open**” button.

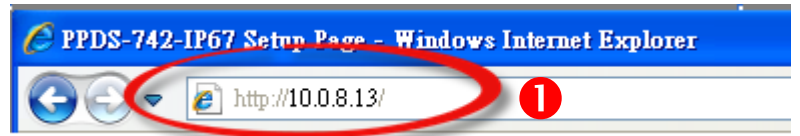
❹ Refer to “**Protocol Description**” and type the command in the command field then click the “**Send command**” button. If the response data is correct, it means the test is success.



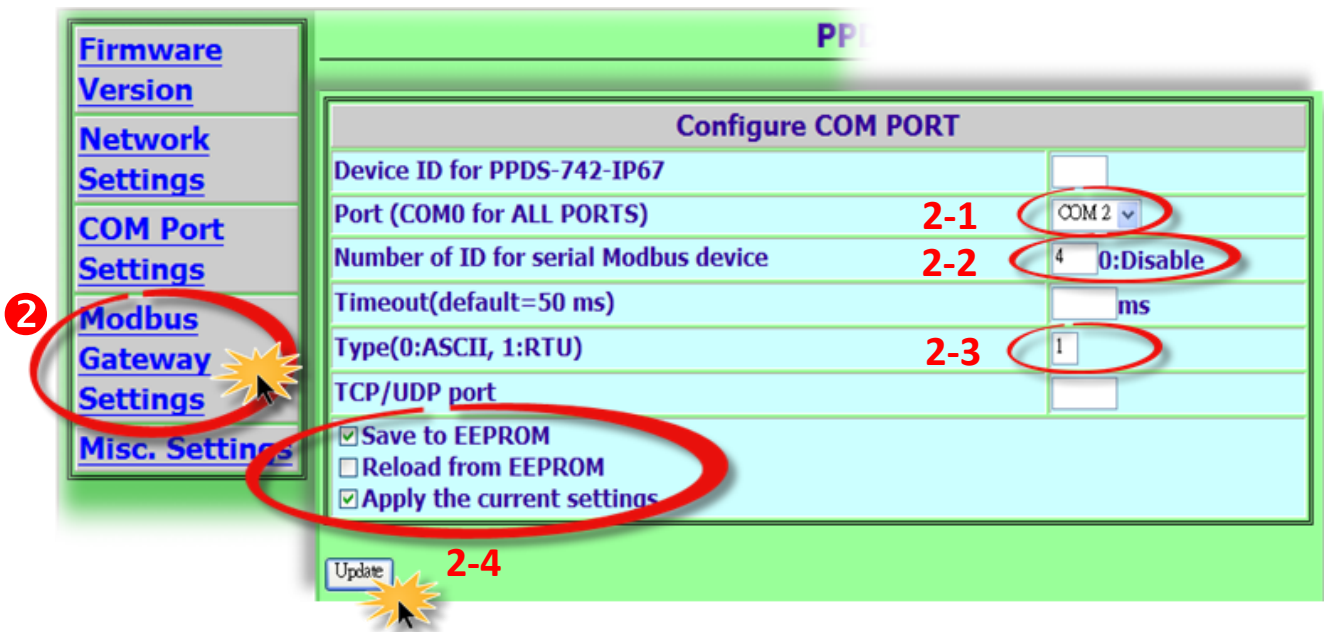
8

Modbus/TCP to Modbus/RTU Gateway

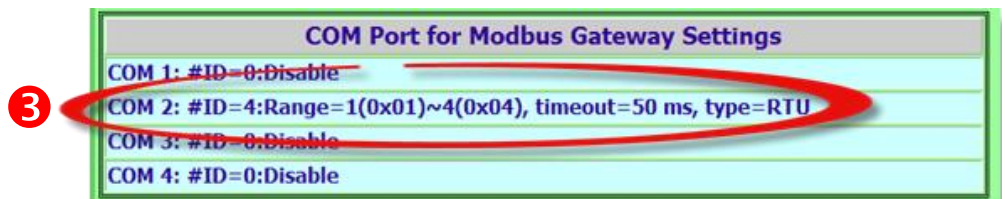
❶ Open web browser, type the URL address of the PPDS-700-IP67 and press “Enter” to connect to the PPDS-700-IP67.



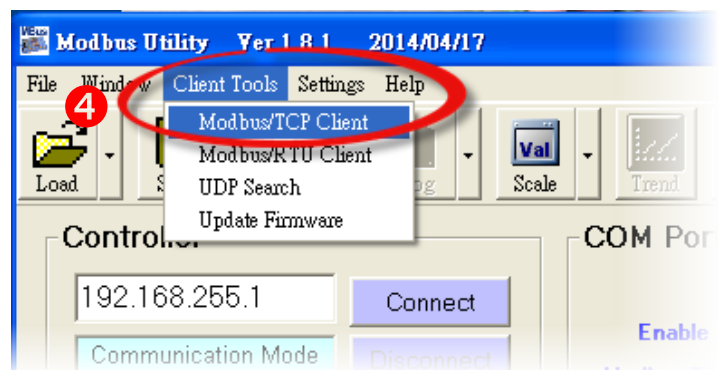
❷ Click the “Modbus Gateway Setting” in the web page to configure the COM ports, as follows:
2-1: Select appropriate COM Port from the “Port (COM0 for All PORTS)” drop down list (e.g. COM2).
2-2: Assign a Numbers of Modbus device in the “Number of ID for serial Modbus device” field (e.g. 4).
2-3: Select Modbus type from the “Type (0: ASCII, 1:RTU)” field (e.g. 1 “Modbus RTU”).
2-4: Checked the “Save to EEPROM” and “Apply the current setting” and then click the “Update” button to update it to PPDS-700-IP67.



❸ Check the COM Port for Modbus gateway settings.



❹ Back to Modbus Utility, and then click the “Client tools” → “Modbus/TCP Client”.

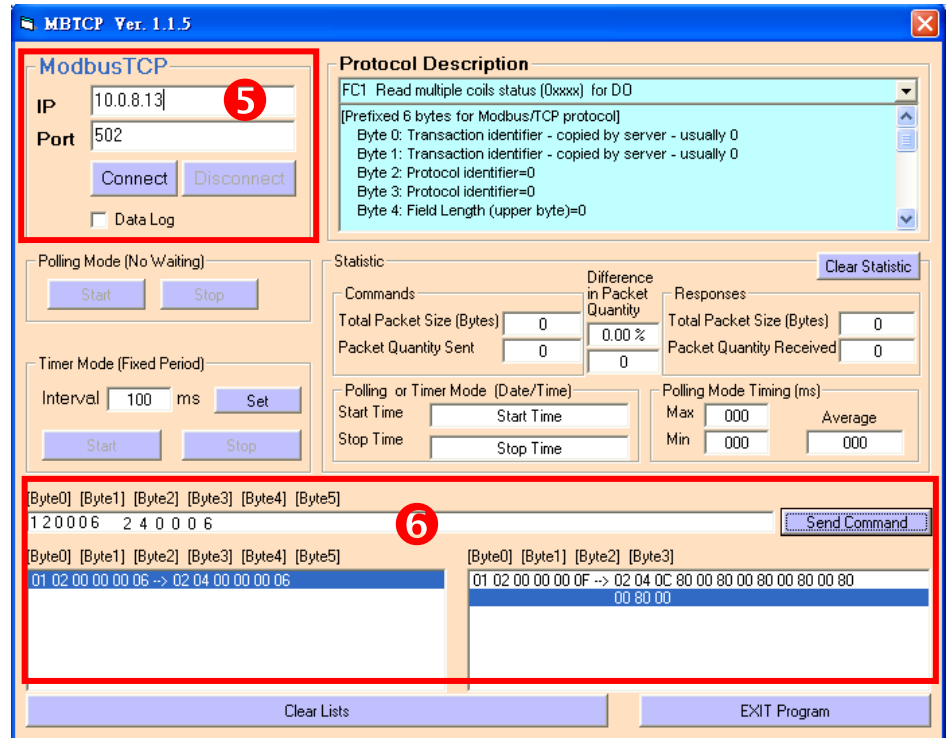


9

Successful Testing

5 Enter the **IP address of PPDS-700-IP67** and then click “**Connect**” button to connect the PPDS-700-IP67.

6 Refer to “**Protocol Description**” and type command in the command field then click the “**Send Command**” button. If the response data is correct, it means the test is success.



Related Information

- PPDS-700-IP67 product page:
http://www.icpdas.com/root/product/solutions/industrial_communication/pds/ppds-700-ip67.html
- Documentation:
CD: \Napdos\PDS\PDS-700\Document
<http://ftp.icpdas.com/pub/cd/8000cd/napdos/pds/pds-700/document/>
- Firmware:
CD: \Napdos\PDS\PDS-700\VxComm\Server(PDS)
[http://ftp.icpdas.com/pub/cd/8000cd/napdos/pds/pds-700/vxcomm/server\(pds\)/](http://ftp.icpdas.com/pub/cd/8000cd/napdos/pds/pds-700/vxcomm/server(pds)/)
- M-7015 product page (optional):
http://www.icpdas.com/products/Remote_IO/m-7000/m-7015.htm