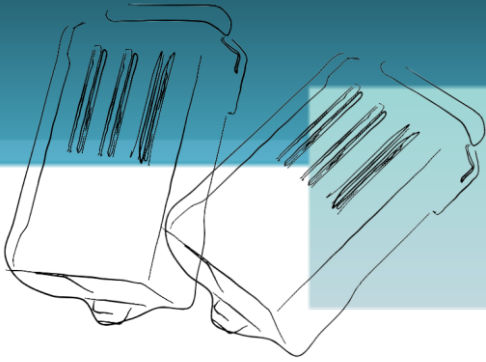


tET/tPET SERIES QUICK START GUIDE



*For tET/tPET-P2POR2
tET/tPET-PD2POR2*

English/ Mar 2013/ Version 1.1

1 What's in the shipping package?

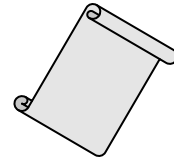
The package includes the following items:



**tET/tPET-P2POR2
tET/tPET-PD2POR2**



Software CD



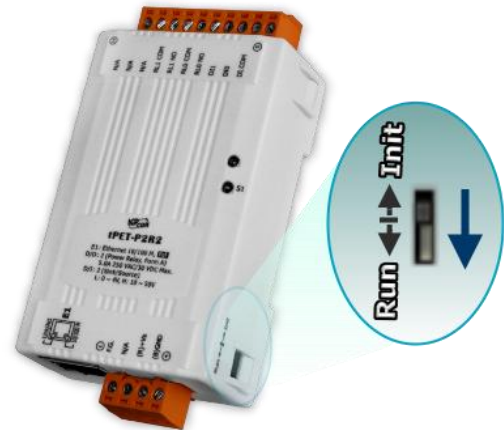
**Quick Start
(This Document)**

2 Preparations for devices

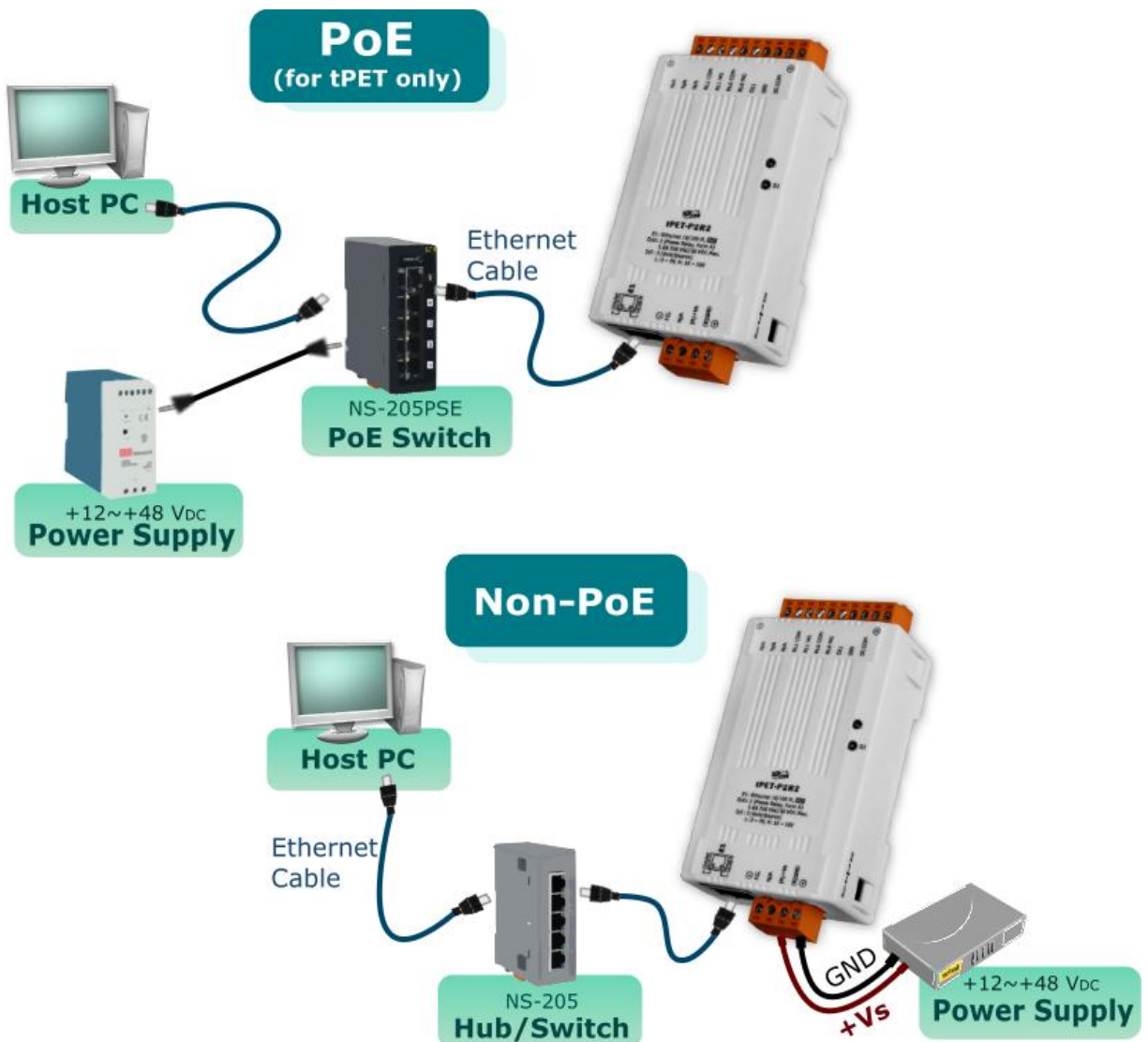
1. Power Supply: **+12 ~ +48 V_{DC}**
2. Ethernet Hub.(PoE Ethernet Switch for tPET module only)
3. Make sure your PC has workable network settings.
4. Disable or well configure your Windows firewall and Anti-Virus firewall first, else the "**Search Servers**" on page 6 may not work. (Please contact with your system Administrator)

3 Connecting the Power and Host PC

1. Check Init/Run Switch is on "RUN" position.



2. Connect both the tET/tPET-P(D)2POR2 and your computer to the same sub network or the same Ethernet Switch, and power tET/tPET-P(D)2POR2 on.



4 Pin Assignments and Wiring Note

Pin Assignments of the tET/tPET-P2POR2:

Terminal No.	Pin Assignment
E1	Link/Act 10/100 M
01	F.G.
02	N/A
03	(R) +Vs
04	(B) GND

Terminal No.	Pin Assignment
14	N/A
13	N/A
12	RL1 COM
11	RL1 NO
10	RL0 COM
09	RL0 NO
08	N/A
07	DI1
06	DI0
05	DI.COM

Pin Assignments of the tET/tPET-PD2POR2:

Terminal No.	Pin Assignment
E1	Link/Act 10/100 M
01	F.G.
02	N/A
03	(R) +Vs
04	(B) GND

Terminal No.	Pin Assignment
14	N/A
13	N/A
12	RL1 COM
11	RL1 NO
10	RL0 COM
09	RL0 NO
08	DI.GND
07	DI1
06	DI0
05	N/A

Digital Output Wiring of the tET/tPET-P(D)2POR2:

Output Type	Readback as 1	Readback as 0
	Relay On	Relay Off
Form A Relay Contact		

■ Digital Input Wiring of the tET/tPET-P2POR2:

Digital Input	Readback as 1	Readback as 0
	+10 ~ +50 V _{DC}	OPEN or <4 V _{DC}
Sink		
	+10 ~ +50 V _{DC}	OPEN or <4 V _{DC}
Source		

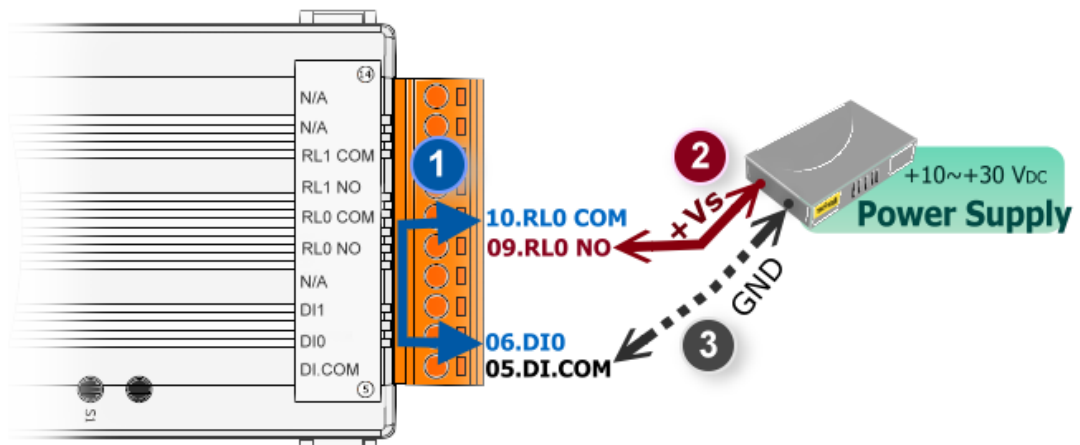
■ Digital Input Wiring of the tET/tPET-PD2POR2:

Input Type	Readback as 0	Readback as 1
	Relay Off	Relay On
Dry Contact		

■ Wire the DI and DO for self-test. The wiring as follows:

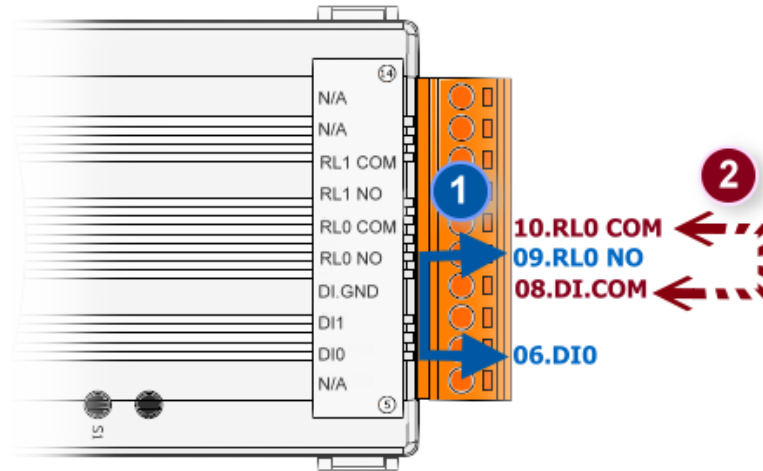
tET/tPET-P2POR2

1. Connect the **RL0 COM** and **DI0**. (Pin10 connect to Pin06)
2. Supply the **External Power +10V** to **RL0 NO**. (External +10V connect to Pin09)
3. Supply the **External Power GND** to **DI.COM**. (External GND connect to Pin05)



tET/tPET-PD2POR2

1. Connect the **DIO** and **RL0 NO.** (Pin06 connect to Pin09)
2. Connect the **DI.COM** and **RL0 COM.** (Pin08 connect to Pin10)



■ DI/DO Modbus Address

(1xxxx) DI address:

Begin address	Points	Description	Bits per Point	Range	Access Type
0 (0x0)	1~2	Digital Input	1	0:Off 1:On	R
32 (0x20)	1~2	Digital latched status (high)	1	0:no 1:latched	R
64 (0x40)	1~2	Digital latched status (low)	1	0:no 1:latched	R

(0xxxx) DO address:

Begin address	Points	Description	Bits per Point	Range	Access Type
0 (0x0)	1~2	Digital Output	1	0: Off 1:On	R/W
32 (0x20)	1	Clear all DI latched status (high)	1	1: Clear	W
33 (0x21)	1	Clear all DI latched status (low)	1	1: Clear	W
.
235 (0xEB)	1~2	Power-on value for DO	1	0=Off 1=On	R/W/F
267 (0x10B)	1~2	safe value for DO	1	0=Off 1=On	R/W/F



For detail "DI/DO Modbus Address" information, please refer to section **6.3 Modbus Register Map** of user's manual. CD:\NAPDOS\tPET\Document\

<http://ftp.icpdas.com/pub/cd/tinymodules/napdos/tPET/document/>

5

Configuring Ethernet Settings

1. Run the eSearch Utility.

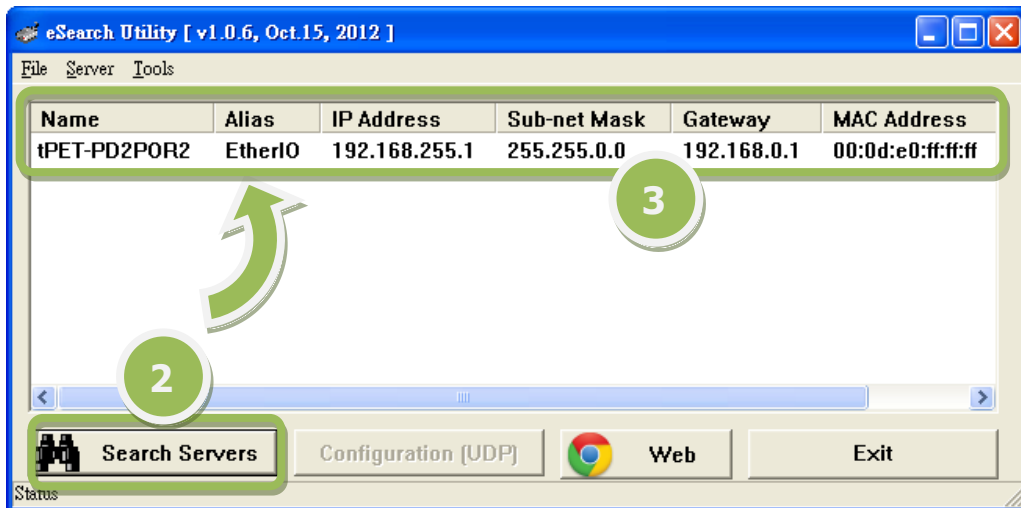
The eSearch Utility is located at:
CD:\Napdos\Software\eSearch\
<http://ftp.icpdas.com/pub/cd/tinymodules/napdos/software/esearch/>



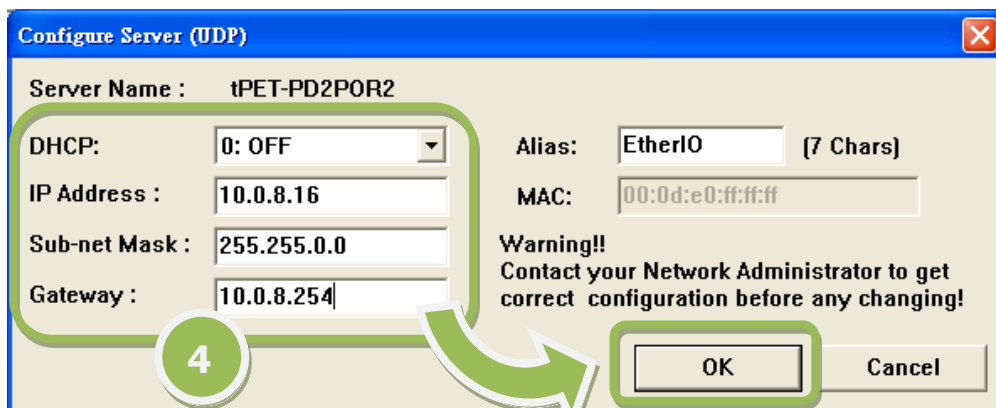
eSearch.exe
eSearch Utility



2. Click "**Search Servers**" button to search your tET/tPET-P(D)2POR2.
3. Double-Click your tET/tPET-P(D)2POR2 to configure the settings.

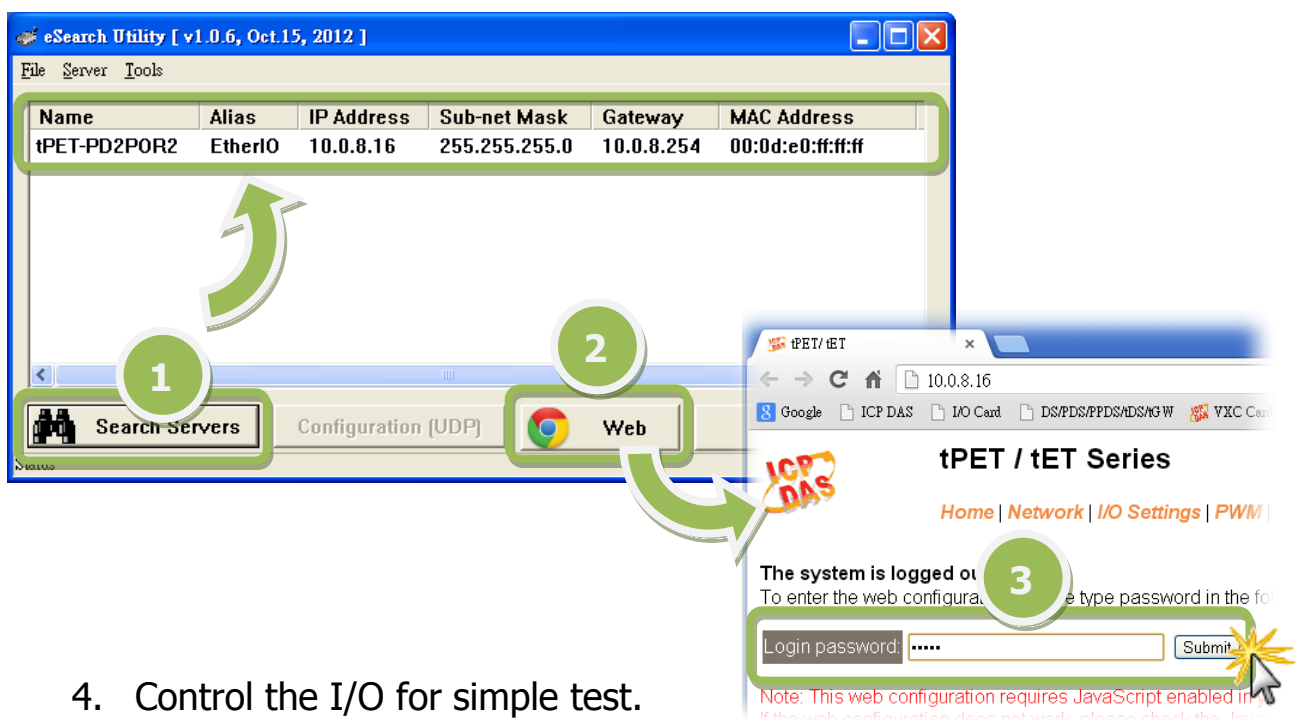


4. Contact your Network Administrator to get correct network configuration. Modify the network settings and then click "**OK**" button. The tET/tPET-P(D)2POR2 will restart it-self immediately.



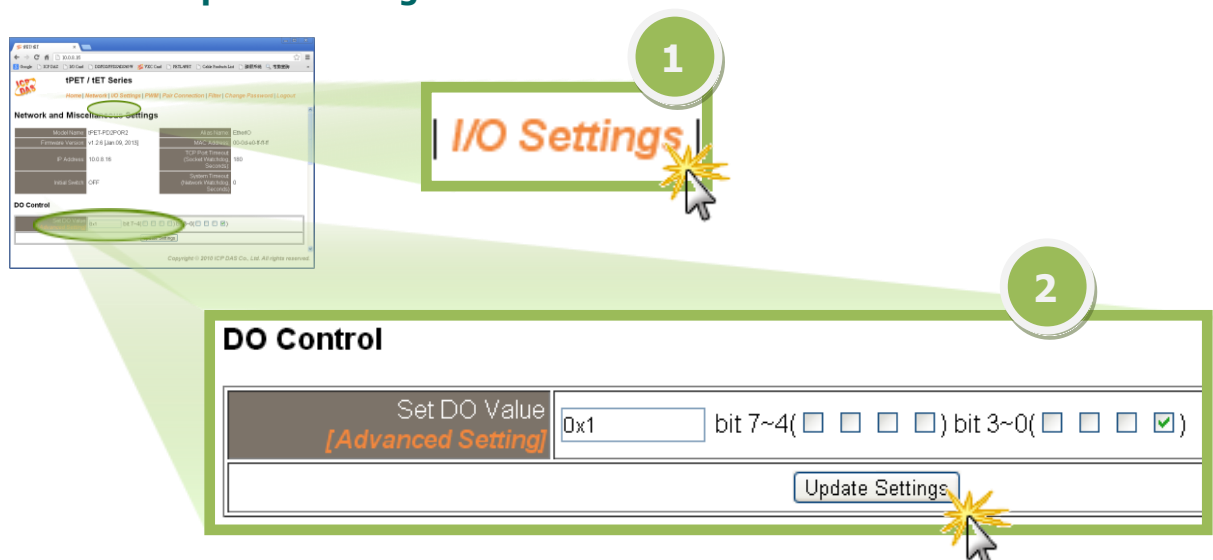
6 Testing your tET/tPET Module

1. Wait 2 seconds and then click the **"Search Servers"** button again to ensure the tET/tPET-P(D)2POR2 is working well with new configuration.
2. Click the **"Web"** button to link the tET/tPET-P(D)2POR2 web server.
3. Enter the password and click the **"Submit"** button to enter the configuration web page. (The factory default password: **Admin**)



4. Control the I/O for simple test.

Step 1: In the **I/O Setting** page, check the **"bit0"** checkbox for setting **ON** to **DO0** and click **"Update Settings"** button.



Step 2: In the **Home** page, check that the **DO0** and **DIO** status should show current statuses are "ON".

ICP DAS tPET Series

Home | Network | I/O Setting | Pair Connection | Filter | Change Password | Logout

ALL DI:	Value	Digital Counter	High Latched	Low Latched
DI 0:	ON	0	X	X
DI 1:	OFF	0	X	X
DI 2:	-	-	-	-
DI 3:	-	-	-	-
DI 4:	-	-	-	-
DI 5:	-	-	-	-
DI 6:	-	-	-	-
DI 7:	-	-	-	-
DI 8:	-	-	-	-
DI 9:	-	-	-	-
DI 10:	-	-	-	-
DI 11:	-	-	-	-

D07 - D06 - D05 - D04 - D03 - D02 - D01 OFF D00 ON

Related Information



- **tET/tPET-P(D)2POR2 Series Product Page:**

http://www.icpdas.com/products/Remote_IO/petl-7000/tpet-p2por2.htm

- **tET/tPET Series Documentations:**

CD:\Napdos\tPET\document\
<http://ftp.icpdas.com/pub/cd/tinymodules/napdos/tPET/document/>

- **tET/tPET Series Firmware:**

CD:\Napdos\tPET firmware\
<http://ftp.icpdas.com/pub/cd/tinymodules/napdos/tPET/firmware/>

- **NS-205, NS-205PES Product Page (optional):**

<http://www.icpdas.com/products/Switch/industrial/ns-205.htm>
<http://www.icpdas.com/products/Switch/industrial/ns-205pse.htm>

