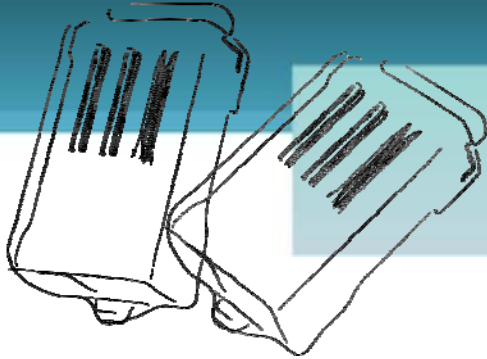


tET/tPET SERIES QUICK START GUIDE



For tET-C4/tPET-C4

English/ January 2013/ Version 1.0

1 What's in the shipping package?

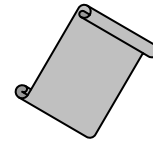
The package includes the following items:



tET-C4 or
tPET-C4



Software CD



Quick Start Guide
(This Document)

2 Preparations for devices

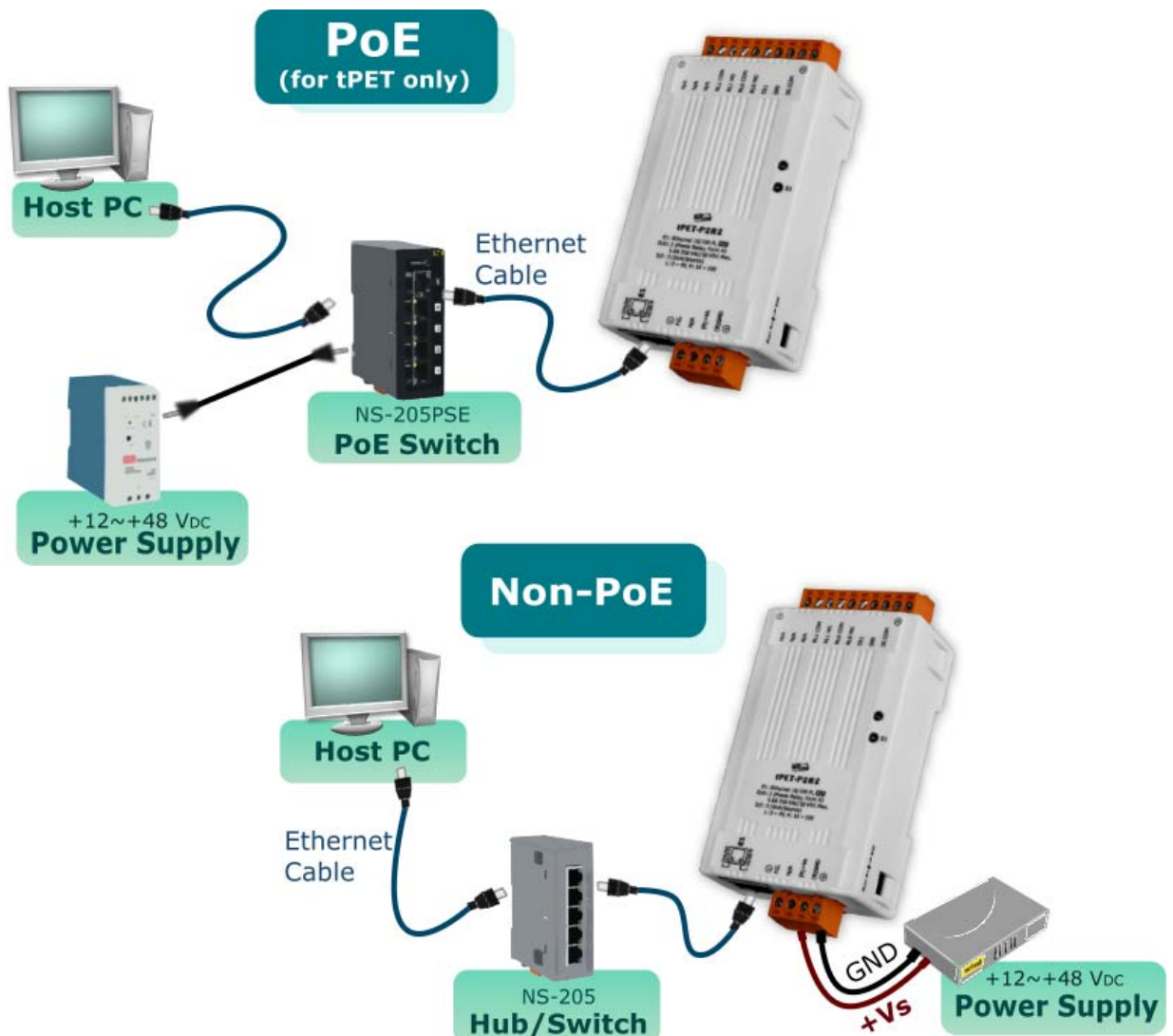
1. Power Supply: +12 ~ +48 V_{DC}
2. Ethernet Hub. (PoE Ethernet Switch for tPET module only)
3. Make sure your PC has workable network settings.
4. Disable or well configure your Windows firewall and Anti-Virus firewall first, else the "**Search Servers**" on page 5 may not work. (Please contact with your system Administrator)

3 Connecting the Power and Host PC

1. Check Init/Run switch is on "RUN" position.



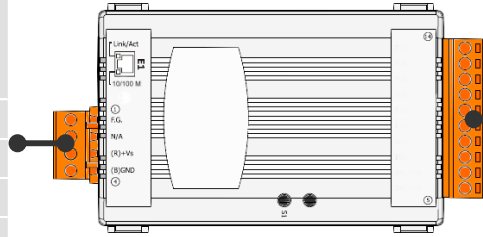
2. Connect both the tET/tPET-C4 and your computer to the same sub network or the same Ethernet Switch, and power tET/tPET-C4 on.



4 Pin Assignments and Wiring Note

Pin Assignments

Terminal No.	Pin Assignment
E1	Link/Act 10/100 M
01	F.G.
02	N/A
03	(R) +Vs
04	(B) GND



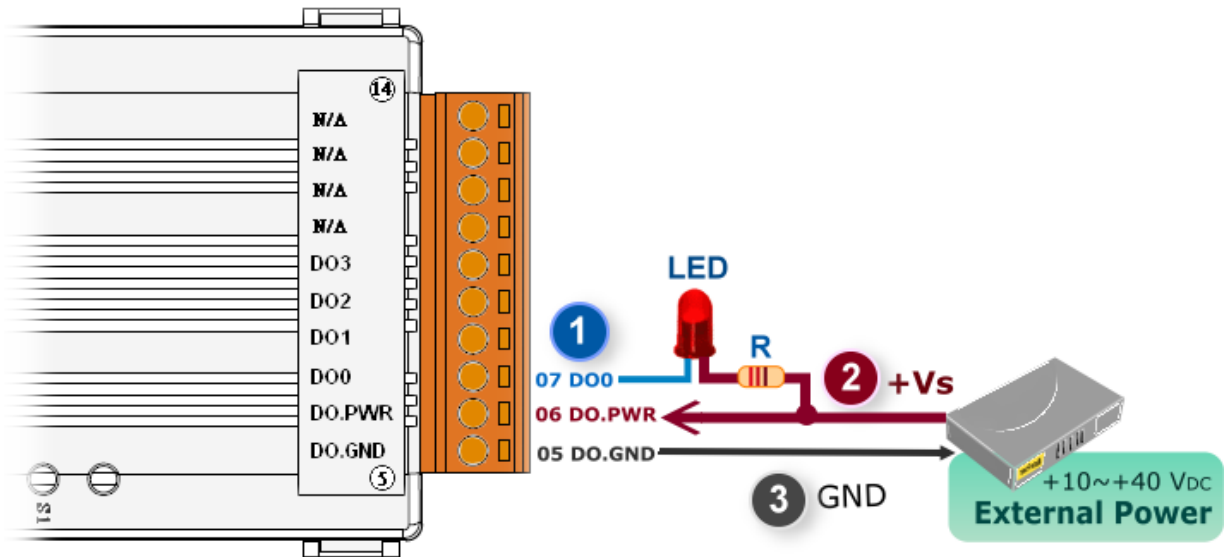
Terminal No.	Pin Assignment
14	N/A
13	N/A
12	N/A
11	N/A
10	DO3
09	DO2
08	DO1
07	DO0
06	DO.PWR
05	DO.GND

Digital Output Wiring

Output Type	Readback as 1	Readback as 0
	Relay ON	Relay Off
Drive Relay		
Resistance Load		

■ Wire the outputs LED and DO for self test. The wiring as follows:

1. Use output LED to connect the **DO.PWR (Pin06)** and **DO0 (Pin07)**.
2. Connect the **External Power +24V** and **DO.PWR (Pin06)**.
3. Connect the **External Power GND** and **DO.GND (Pin05)**.



■ DO Modbus Address

(0xxxx) DO address:

Begin address	Points	Description	Bits per Point	Range	Access Type
0 (0x0)	4	Digital Output	1	0: Off 1: On	R/W
.
235 (0xEB)	4	Power-on value for DO	1	0=Off 1=On	R/W/F
267 (0x10B)	4	safe value for DO	1	0=Off 1=On	R/W/F

i For detail "DO Modbus Address" information, please refer to section **5.3 Modbus Register Map** of user's manual. CD: \NAPDOS\tPET\Document\

<http://ftp.icpdas.com/pub/cd/tinymodules/napdos/tPET/document/>

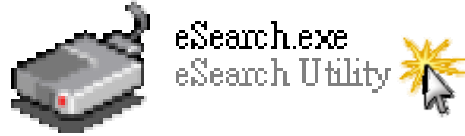
5

Configuring Ethernet Settings

1. Run the eSearch Utility.

The eSearch Utility is located at:
CD:\Napdos\Software\eSearch\

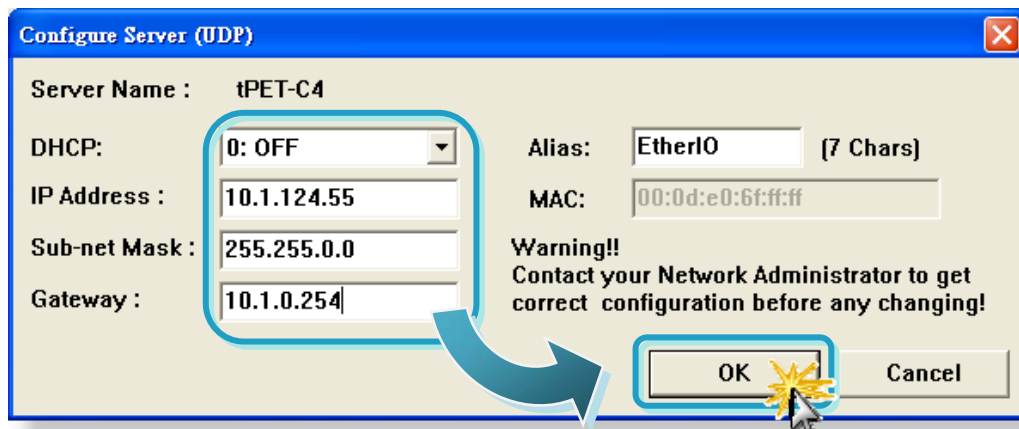
<http://ftp.icpdas.com/pub/cd/tinymodules/napdos/software/esearch/>



2. Click "Search Servers" button to search your tET/tPET-C4.
3. Double-Click your tET/tPET-C4 to configure the settings.

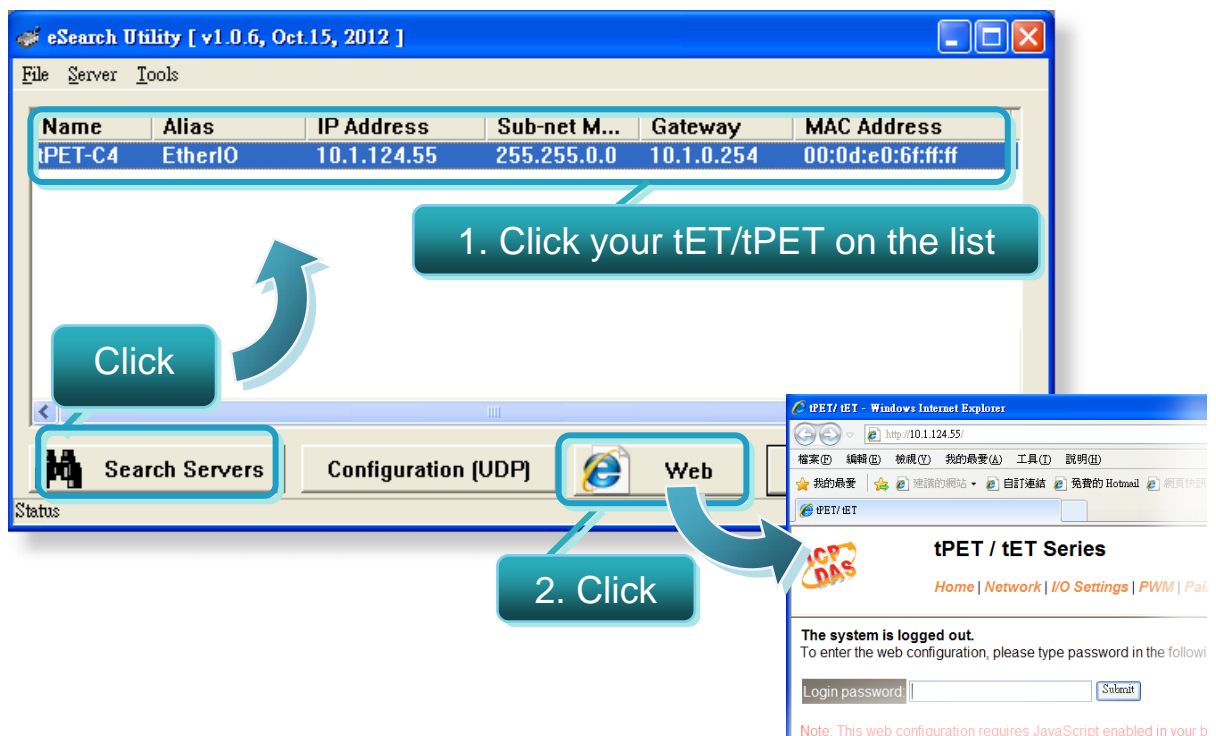


4. Contact your Network Administrator to get correct network configuration. Modify the network settings and then click "OK" button. The tET/tPET-C4 will restart it-self immediately.

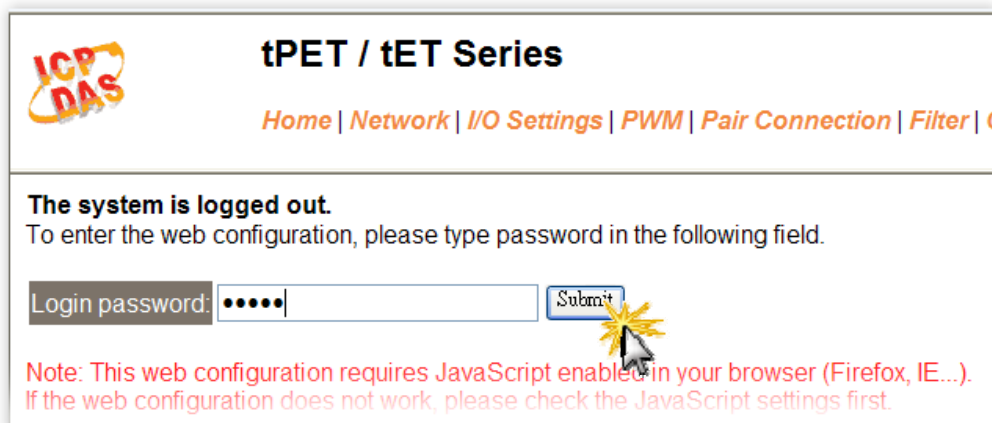


6 Testing your tET/tPET Module

1. Wait 2 seconds and then click the **“Search Servers”** button again to ensure the tET/tPET-C4 is working well with new configuration.
2. Click the **“Web”** button to link the tET/tPET-C4 web server.



3. Enter the password and click the **“Submit”** button to enter the configuration web page. (The factory default password: **Admin**)



4. Control the I/O for simple test.

- In the **I/O Settings** page, check the **“bit0”** checkbox for setting **ON** to **DO0** and click **“Update Settings”** button.

tPET / tET Series

Home | Network | **I/O Settings** | PWM | Pair Connection | Filter | Change Password

Status & Configuration

Model Name:	tPET-C4	Alias Name:	EtherIO
Firmware Version:	v1.1.9 [Apr.09 2012]	MAC Address:	00-0D-E0-61
IP Address:	10.1.124.55	TCP Port Timeout: (Socket Watchdog, Seconds):	180
Initial Switch:	OFF	System Timeout: (Network Watchdog, Seconds)	0

DO Control

Set DO Value bit 7~4() bit 3~0()

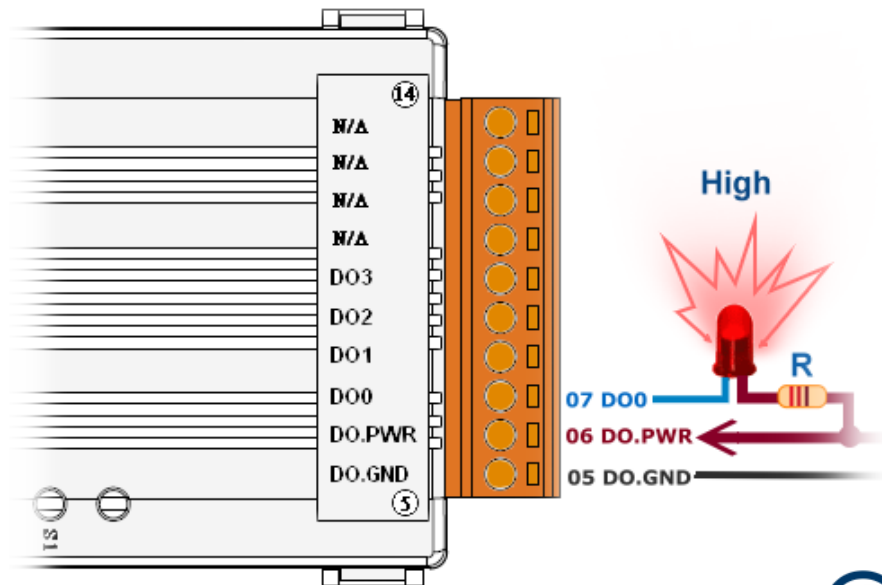
- In the **Home** page, check that the **DO0** status should show current status are **“ON”**.

tPET / tET Series

Home | Network | I/O Settings | PWM | Pair Connection | Filter | Change Password | Logout

DI/DO	ALL DI	Value	Counter / Frequency	High Latched	Low Latched											
	DI 0:	-	-	-	-											
	DI 1:	-	-	-	-											
	DI 2:	-	-	-	-											
	DI 3:	-	-	-	-											
	DI 4:	-	-	-	-											
	DI 5:	-	-	-	-											
	DI 6:	-	-	-	-											
	DI 7:	-	-	-	-											
	DI 8:	-	-	-	-											
	DI 9:	-	-	-	-											
	DI 10:	-	-	-	-											
	DI 11:	-	-	-	-											
	DO7	-	DO6	-	DO5	-	DO4	-	DO3	OFF	DO2	OFF	DO1	OFF	DO0	ON

5. Check DO0 (Pin07) of output LED state for high.



Related Information

- **tET-C4/tPET-C4 Series Product Page:**
http://www.icpdas.com/products/Remote_IO/petl-7000/tpet-c4a4.htm
- **tET/tPET Series Documentations:**
CD:\Napdos\tPET\document\
<http://ftp.icpdas.com/pub/cd/tinymodules/napdos/tPET/document/>
- **tET/tPET Series Firmware:**
CD:\Napdos\tPET firmware\
<http://ftp.icpdas.com/pub/cd/tinymodules/napdos/tPET/firmware/>
- **NS-205, NS-205PES Product Page (optional):**
<http://www.icpdas.com/products/Switch/industrial/ns-205.htm>
<http://www.icpdas.com/products/Switch/industrial/ns-205pse.htm>

